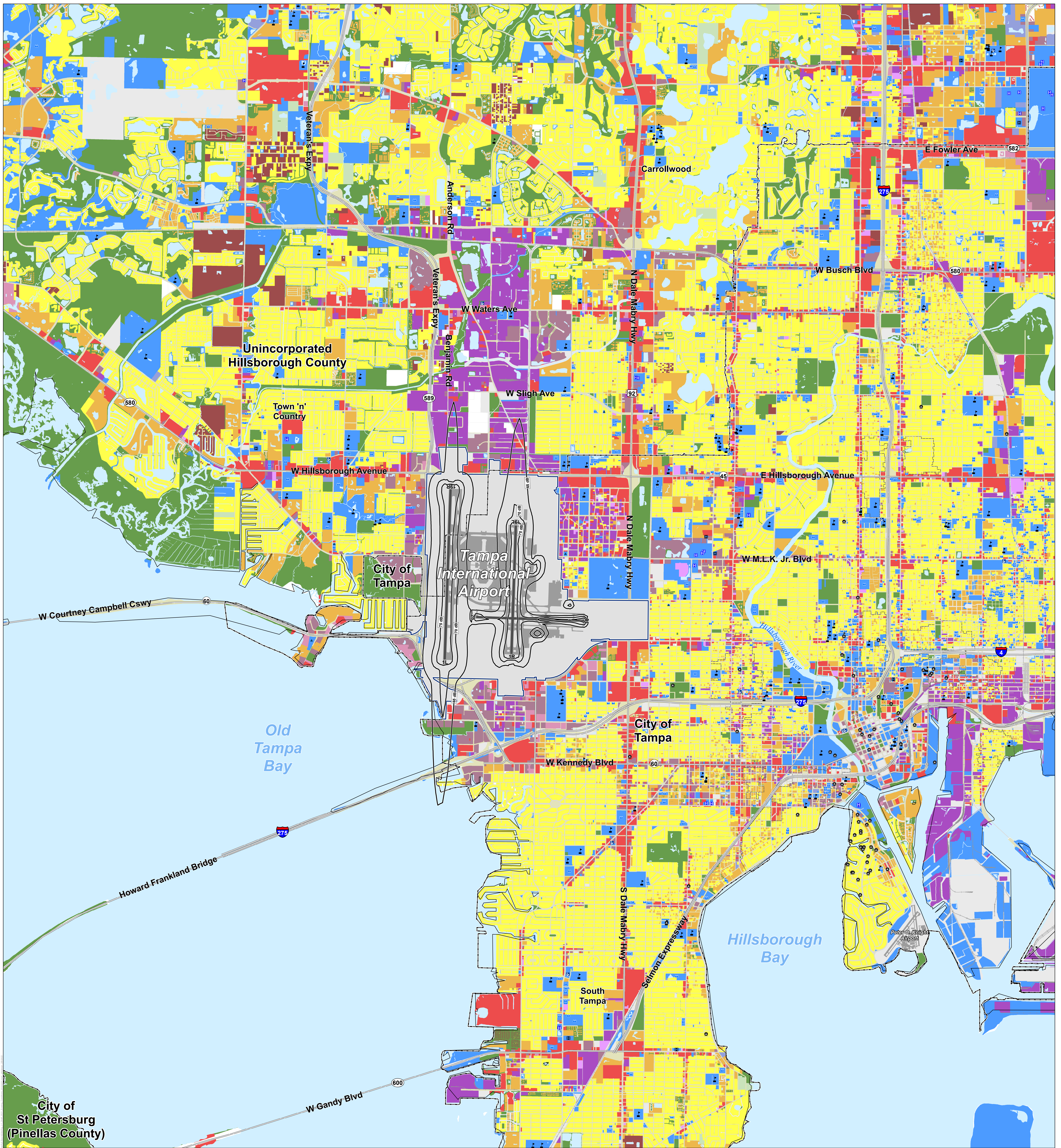


APPENDIX J

Official Noise Exposure Maps

This Appendix contains the official Noise Exposure Maps (NEMs) of Tampa International Airport developed as a part of the NEM Update.

- Figure J-1 Final 2021 Existing Conditions Noise Exposure Map
- Figure J-2 Final 2026 Future Conditions Noise Exposure Map
- Figure J-3 AEDT Fixed-Wing Flight Tracks – North Flow
- Figure J-4 AEDT Fixed-Wing Flight Tracks – South Flow
- Figure J-5 AEDT Helicopter Flight Tracks – All Flows



Legend

<ul style="list-style-type: none"> □ General Airport Property Boundary ● Care Facility ★ National Register Historic Resource ● Local Historic Resource ■ Nursing/Convalescent Facility ■ Place of Worship ■ Hospital ■ School ■ Library 	<ul style="list-style-type: none"> — Highway — Major Road — Rail Line — Stream — Waterbody □ Municipalities □ County Boundary 	<ul style="list-style-type: none"> ■ Existing Land Use ■ Residential - Single Family ■ Residential - Multi-Family ■ Residential - Mobile Home ■ Residential - Group ■ Mixed Use ■ Commercial - Lodging ■ Commercial - Office ■ Commercial - Retail/Dining ■ Industrial/Manufacturing ■ Institutional/Public ■ Park/Open Space ■ Agriculture ■ Transportation/Utilities ■ Unknown ■ Vacant 	<ul style="list-style-type: none"> — 2021 DNL Contours
--	--	---	---

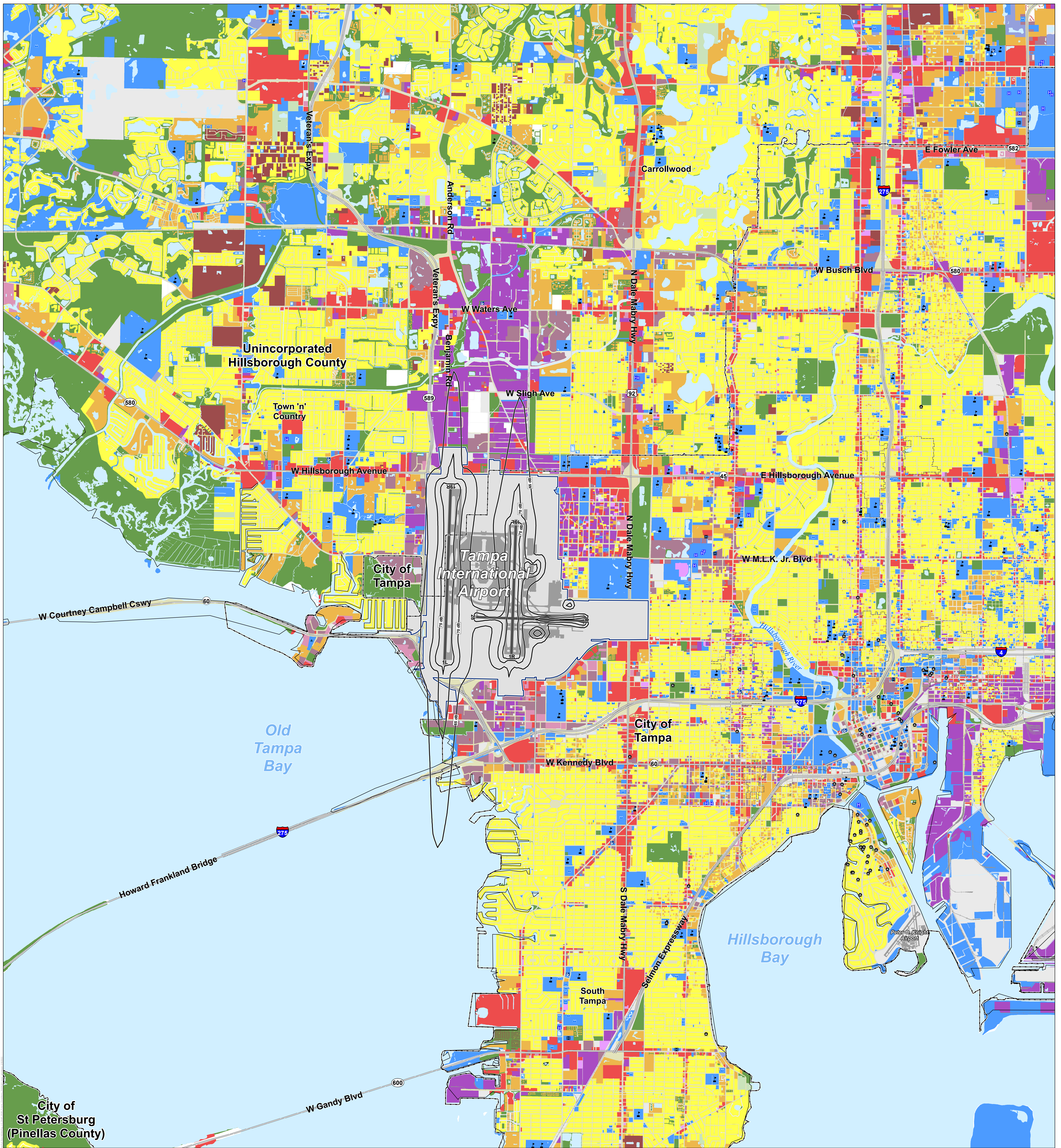
0 4,000
Feet
1" = 2,000'

Sponsor's Certification
 The Hillsborough County Aviation Authority certifies that it has afforded interested persons adequate opportunity to submit their views, data, and comments concerning the correctness and adequacy of the Tampa International Airport 2021 Noise Exposure Map and descriptions of forecast aircraft operations. The 2021 operations at Tampa International Airport are hereby certified to be consistent with fleet mix, forecast operational levels, and flight procedures depicted on this 2021 Noise Exposure Map.

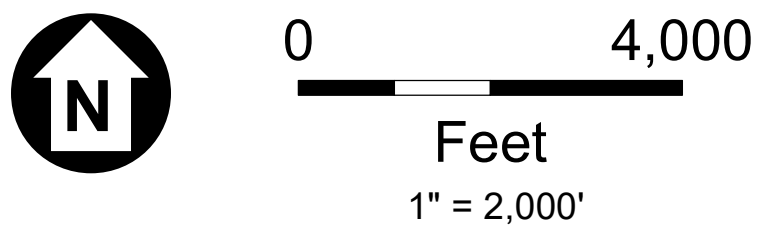
By:
 John Tillacos
 Title: Executive Vice President of Airport Operations & Customer Service
 Hillsborough County Aviation Authority
 Date: December 16, 2021
 Airport Name: Tampa International Airport
 Airport Owner/Operator: Hillsborough County Aviation Authority
 Address: 4160 George J. Bean Parkway, Suite 2400, Tampa, FL 33607

Figure J-1
Final 2021 Existing Conditions
Noise Exposure Map
 Map 1 of 5
 Tampa International Airport

SOURCE: AEDT, 3d, 2021; City of Tampa, July 2020; County of Hillsborough, July 2020; County of Pinellas, July 2020; Hillsborough County Property Appraiser, July 2020; Hillsborough MPO, July 2020; Pinellas County Assessor, July 2020.



- Legend**
- | | | | | |
|-------------------------------------|-----------------|-----------------------------|----------------------------|-------------------|
| General Airport Property Boundary | Highway | Existing Land Use | Commercial - Retail/Dining | 2026 DNL Contours |
| Care Facility | Major Road | Residential - Single Family | Industrial/Manufacturing | |
| National Register Historic Resource | Rail Line | Residential - Multi-Family | Institutional/Public | |
| Local Historic Resource | Stream | Residential - Mobile Home | Park/Open Space | |
| Nursing/Convalescent Facility | Waterbody | Residential - Group | Agriculture | |
| Place of Worship | Municipalities | Mixed Use | Transportation/Utilities | |
| Hospital | County Boundary | Commercial - Lodging | Unknown | |
| School | | Commercial - Office | Vacant | |
| Library | | | | |



Sponsor's Certification
 The Hillsborough County Aviation Authority certifies that it has afforded interested persons adequate opportunity to submit their views, data, and comments concerning the correctness and adequacy of the Tampa International Airport 2026 Noise Exposure Map and descriptions of forecast aircraft operations. The 2026 operations at Tampa International Airport are hereby certified to be consistent with fleet mix, forecast operational levels, and flight procedures depicted on this 2026 Noise Exposure Map.

By:
 John Tillacos
 Title: Executive Vice President of Airport Operations & Customer Service
 Hillsborough County Aviation Authority
 Date: December 16, 2021
 Airport Name: Tampa International Airport
 Airport Owner/Operator: Hillsborough County Aviation Authority
 Address: 4160 George J. Bean Parkway, Suite 2400, Tampa, FL 33607

Figure J-2
Final 2026 Future Conditions
Noise Exposure Map
 Map 2 of 5
 Tampa International Airport

SOURCE: AEDT, 3d, 2021; City of Tampa, July 2020; County of Hillsborough, July 2020; County of Pinellas, July 2020; Hillsborough County Property Appraiser, July 2020; Hillsborough MPO, July 2020; Pinellas County Assessor, July 2020.

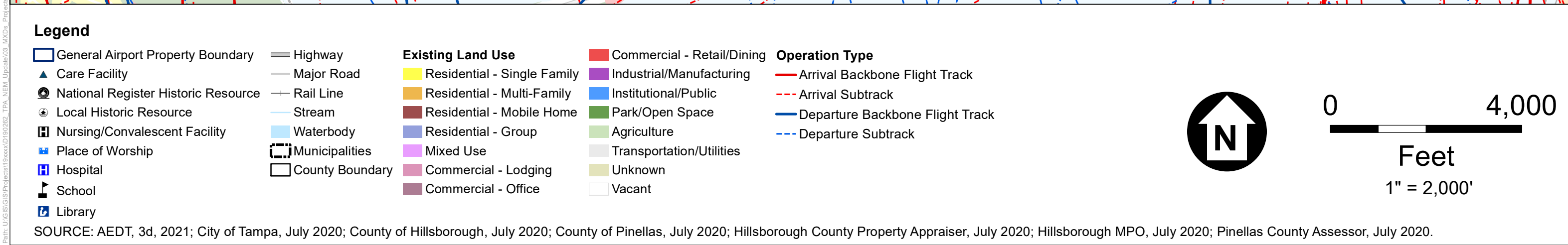
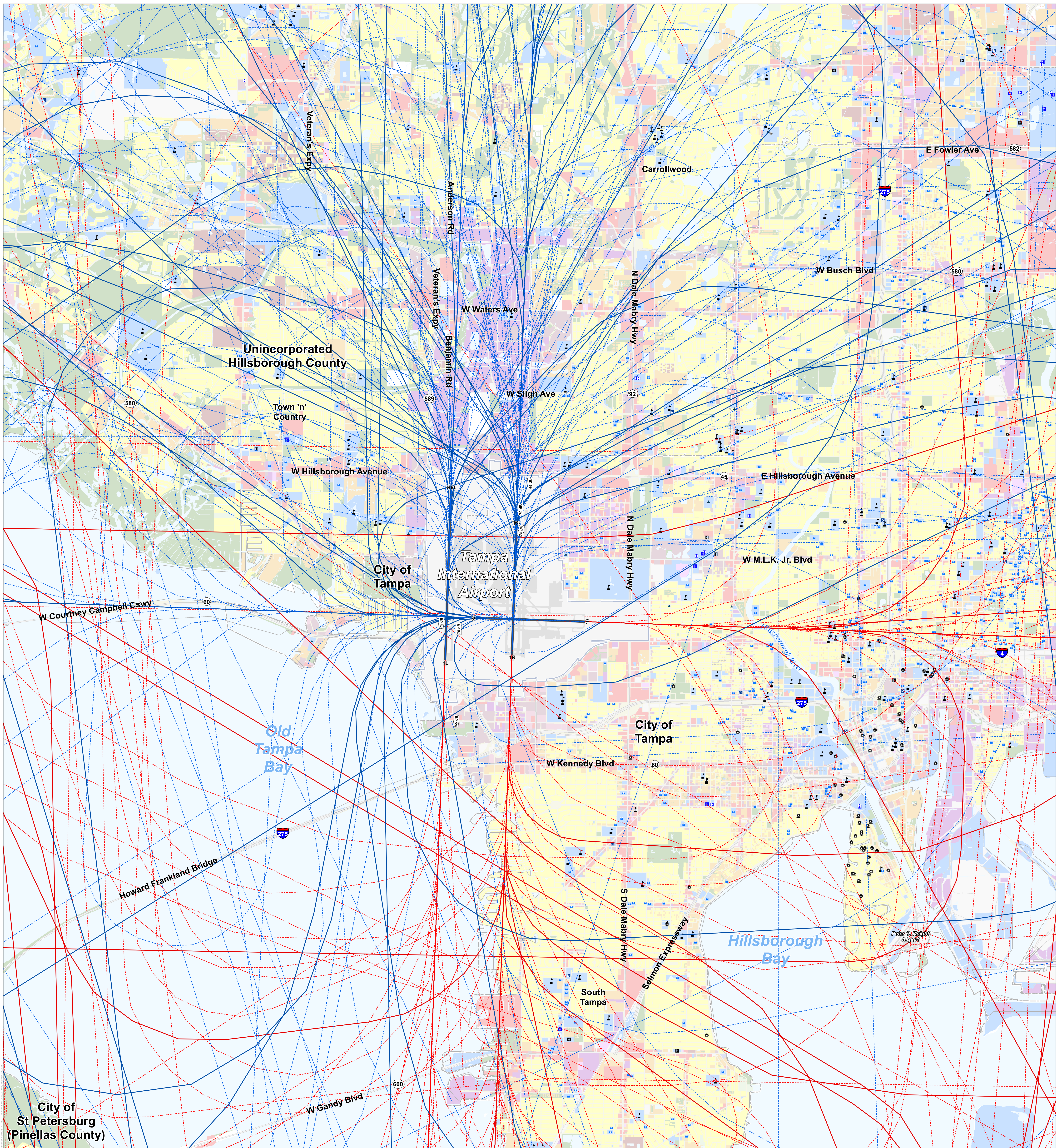


Figure J-3
AEDT Fixed-Wing Flight Tracks
North Flow
 Map 3 of 5
 Tampa International Airport

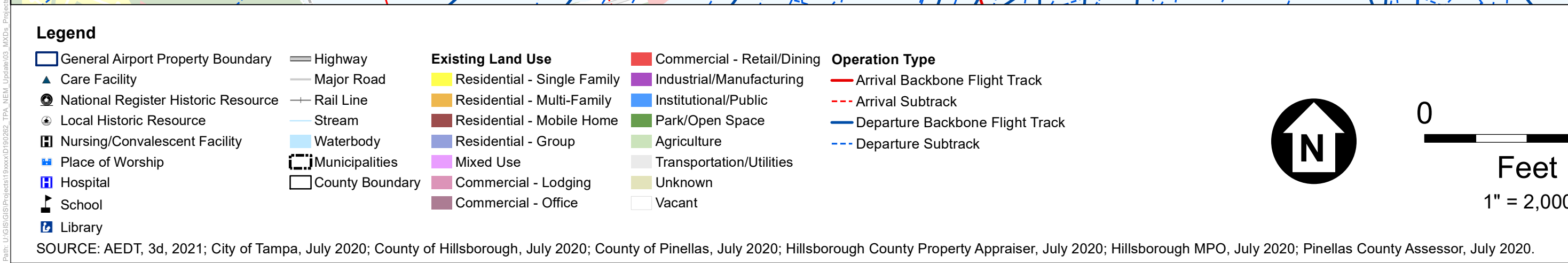
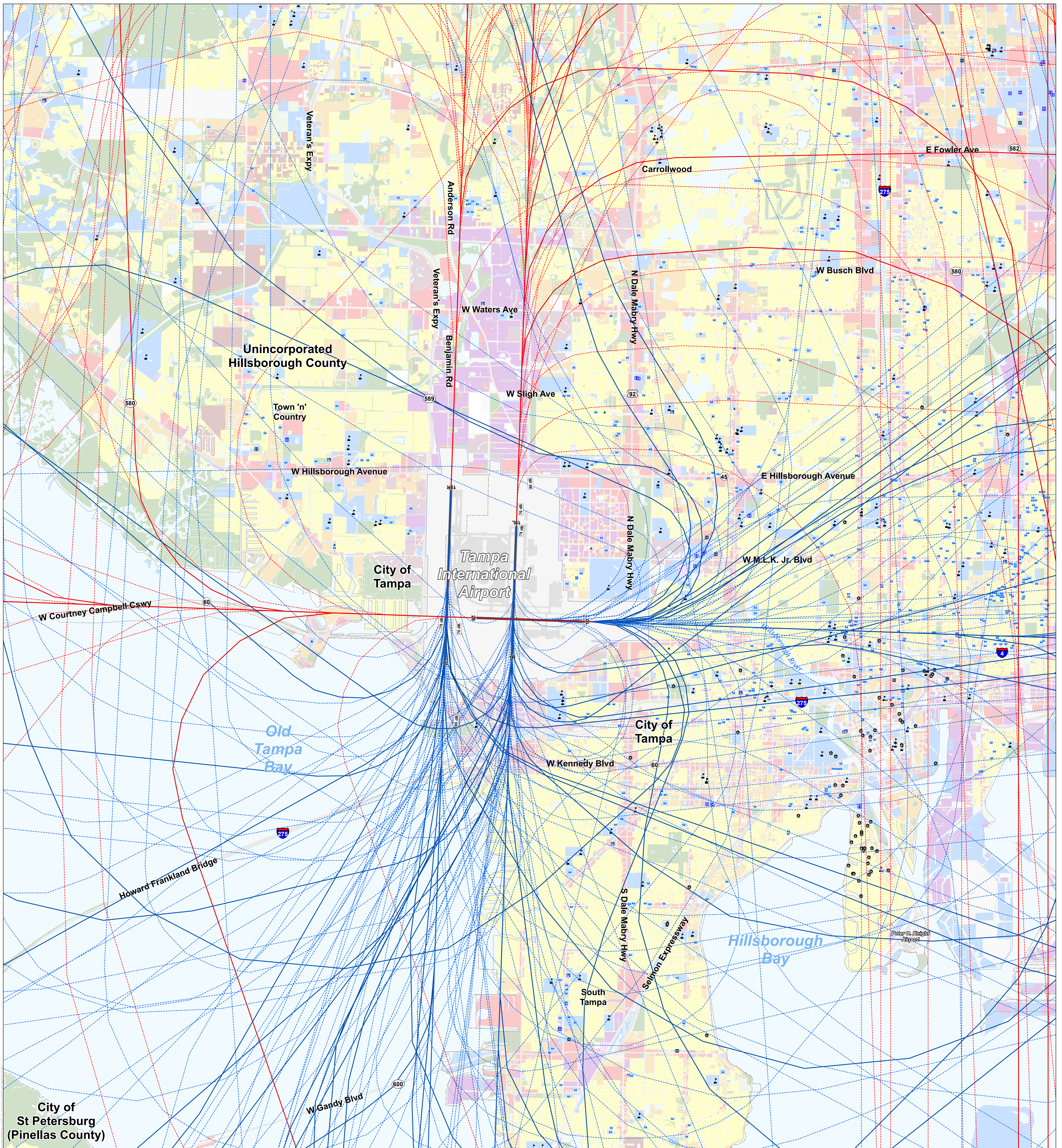
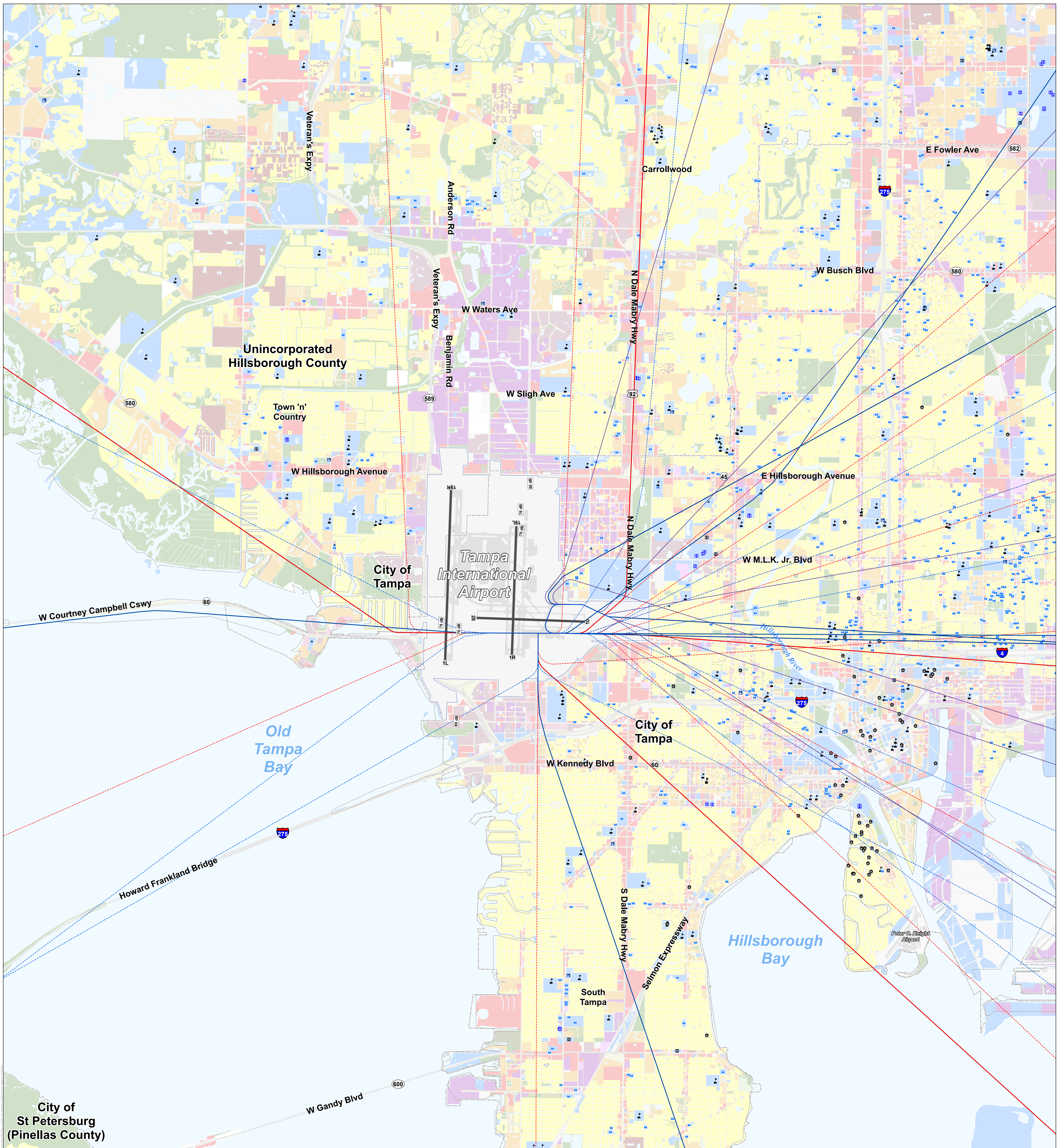


Figure J-4
AEDT Fixed-Wing Flight Tracks
South Flow
 Map 4 of 5
 Tampa International Airport

SOURCE: AEDT, 3d, 2021; City of Tampa, July 2020; County of Hillsborough, July 2020; County of Pinellas, July 2020; Hillsborough County Property Appraiser, July 2020; Hillsborough MPO, July 2020; Pinellas County Assessor, July 2020.



Legend		Existing Land Use		Operation Type	
General Airport Property Boundary	Highway	Commercial - Retail/Dining	Commercial - Retail/Dining	Arrival Backbone Flight Track	Arrival Backbone Flight Track
Care Facility	Major Road	Residential - Single Family	Industrial/Manufacturing	Arrival Subtrack	Arrival Subtrack
National Register Historic Resource	Rail Line	Residential - Multi-Family	Institutional/Public	Departure Backbone Flight Track	Departure Backbone Flight Track
Local Historic Resource	Stream	Residential - Mobile Home	Park/Open Space	Departure Subtrack	Departure Subtrack
Nursing/Convalescent Facility	Waterbody	Residential - Group	Agriculture		
Place of Worship	Municipalities	Mixed Use	Transportation/Utilities		
Hospital	County Boundary	Commercial - Lodging	Unknown		
School		Commercial - Office	Vacant		
Library					

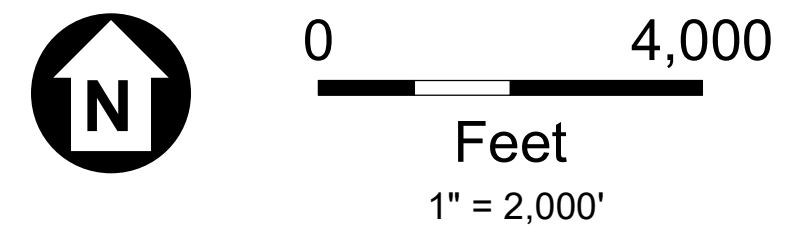


Figure J-5
AEDT Helicopter Flight Tracks
All Flows
 Map 5 of 5
 Tampa International Airport

SOURCE: AEDT, 3d, 2021; City of Tampa, July 2020; County of Hillsborough, July 2020; County of Pinellas, July 2020; Hillsborough County Property Appraiser, July 2020; Hillsborough MPO, July 2020; Pinellas County Assessor, July 2020.