

Tampa International Airport

Monthly Noise Monitoring Office Report

October 2024

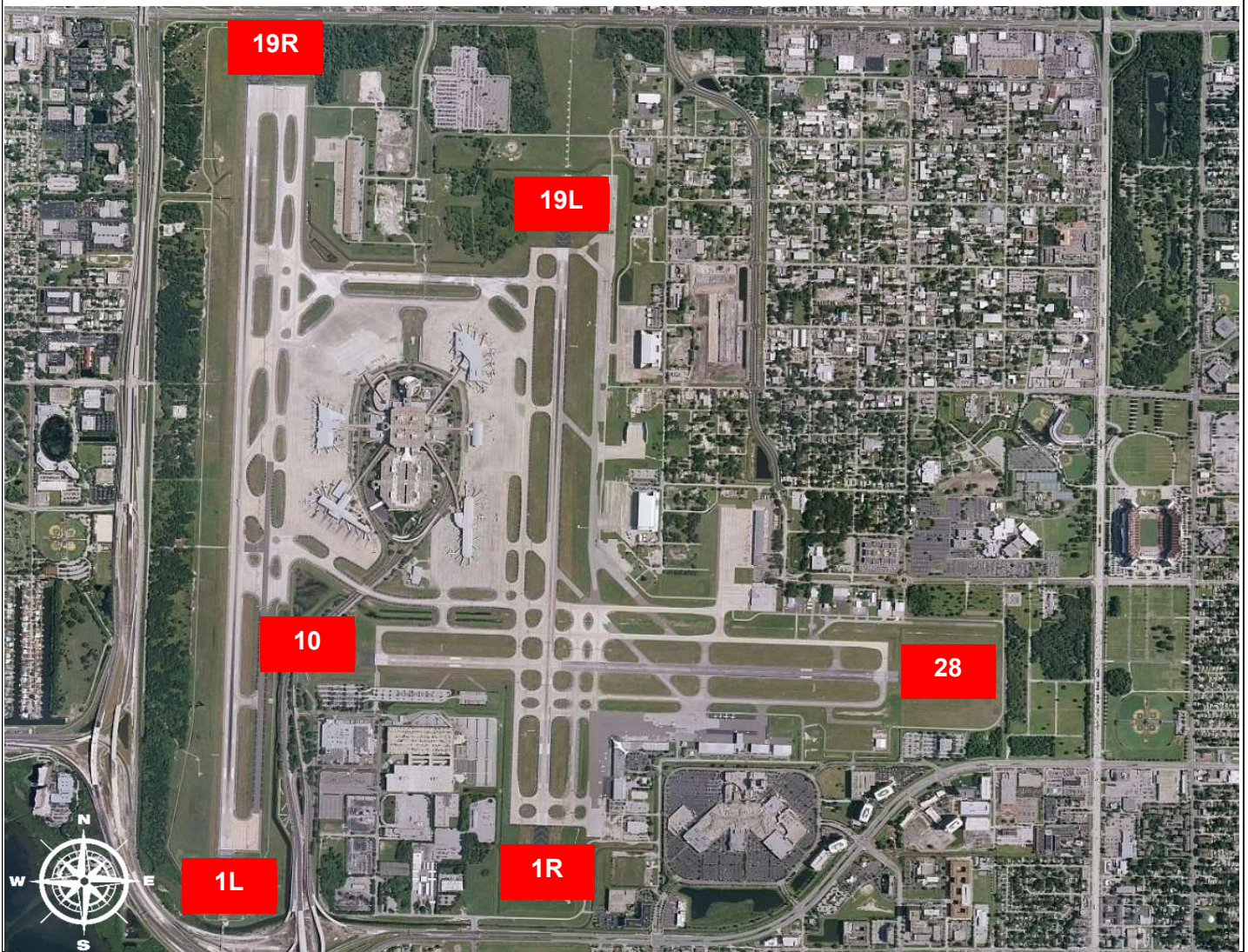


Monthly Noise Report	
Expected Operational Changes	Community Outreach
<ul style="list-style-type: none"> • FAA glass replacement project continues for the Air Traffic Control Tower. • Temporary Tower to be used on east airfield if ATC needs to relocate during work, particularly for overnights (0000-0500) 	<ul style="list-style-type: none"> • The next Community Noise Forum meeting is scheduled for Wednesday, November 27th, 2024 at 1:00 pm. • A community meeting was offered for Wednesday, Oct 23rd. However, no residents attended.
For more information please visit: www.tampaairport.com/noise-abatement or call: (813) 870-7843	

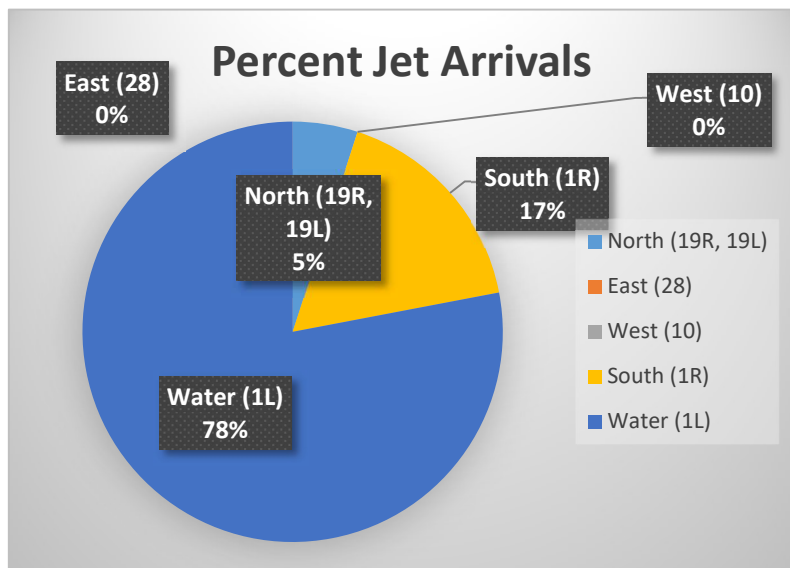
Deviations		
North of Airport	West of Airport	South of Airport
<i>1L / 1R Departures – Westbound Aircraft Turns Below 3,000 ft.</i>	<i>Runway 10-28 Arrivals / Departures</i>	<i>Runway 1R Jet Arrivals and Runway 19L Commercial Jet Departures</i>
Jet Aircraft Turns Below 3,000 ft.: 1,956 Deviation Percentage of Total North Flow Departures: 13.3% Compliance: 86.7%	Total Rwy 10 Jet Arrivals: 11 Total Rwy 28 Jet Departures: 20 Deviation Percentage of Total Jet Operations: .2% Compliance: 99.8%	Total Rwy 1R Jet Landings: 1,229 Total Rwy 19L Commercial Jet Departures: 3 Combined Deviation Percentage of Total Jet Operations⁴: 8.4% Combined Compliance⁴: 91.6%

Operational Totals for October 2024		Key
Total Jet Operations (All Runways):	14,675	¹ Includes: Scheduled and unscheduled runway closures ² Includes: Medivac flights, volume/wake separation, aircraft emergencies, and wildlife strike inspections ³ Flights operating at exactly 7a.m. and 10p.m. are included in both figures ⁴ Combined deviation percentages for both runways
Total Prop/Turboprop Operations (All Runways):	1,751	
Total North Flow Operations All Aircraft (Runway 1L & 1R):	15,419	
Total South Flow Operations All Aircraft (Runway 19R & 19L):	807	
All Aircraft Operations 7 a.m. -10 p.m.³:	14,339	
All Aircraft Operations 10 p.m. – 7a.m.³:	2,382	
Commercial Airline Deviations	33	
Construction/Maintenance-Related Deviations¹:	139	
FAA Assigned Deviations² (corporate & commercial jet combined):	92	
General Aviation Deviations⁵:	999	
Noise Complaints (Month/Year):	47 / 1,133	

Runway Map



Percentage of Jet Arrivals by Runway End (October 2024)



- **West Runway Unavailable** includes closures for maintenances and emergencies, among other factors.
- Total complaints based on complaints logged as of [October 30, 2024].
- Commercial Jet Aircrafts are: Boeing, Airbus, McDonald Douglas, Douglas Corporation, Bombardier and Embraer commercial aircraft.
- Pilot Request Deviations include commercial jet aircraft departures on Runway 19L and jet aircraft arrivals on Runway 1R.
- This data compiled from the noise office software provided by Casper Airport Solutions and may differ from official FAA monthly traffic counts.