

Tampa International Airport

Monthly Noise Monitoring Office Report

November 2024

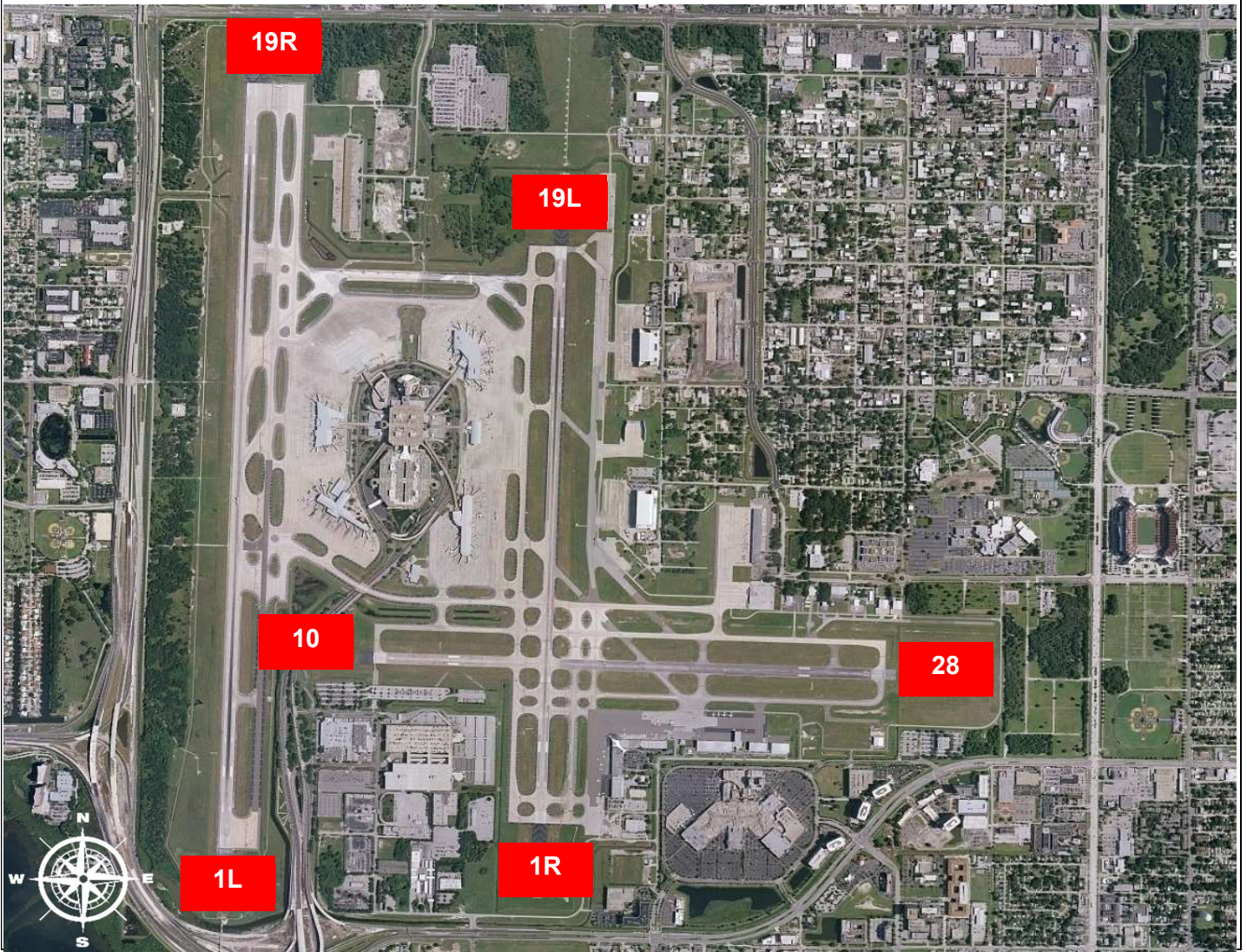


Monthly Noise Report	
Expected Operational Changes	Community Outreach
<ul style="list-style-type: none"> • FAA glass replacement project continues for the Air Traffic Control Tower. Temporary Tower to be used on east airfield if ATC needs to relocate during work, particularly for overnights (0000-0500) • Closure of 1R/19L beginning Jan 20th through Feb 4th 	<ul style="list-style-type: none"> • A Community Noise Forum meeting was scheduled for Wednesday, November 27th, however there were no RSVPs/Attendees.
For more information please visit: www.tampaairport.com/noise-abatement or call: (813) 870-7843	

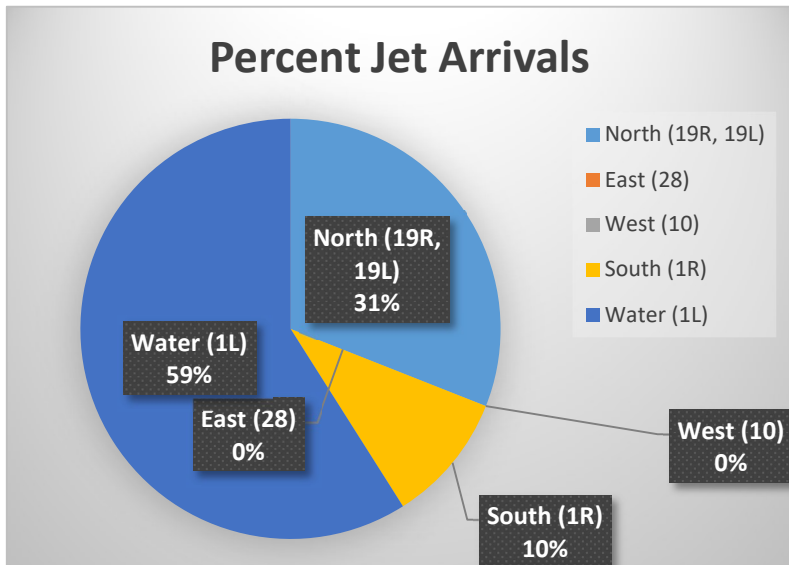
Deviations		
North of Airport	West of Airport	South of Airport
<i>1L / 1R Departures – Westbound Aircraft Turns Below 3,000 ft.</i>	<i>Runway 10-28 Arrivals / Departures</i>	<i>Runway 1R Jet Arrivals and Runway 19L Commercial Jet Departures</i>
Jet Aircraft Turns Below 3,000 ft.: 1,249 Deviation Percentage of Total North Flow Departures: 7.4% Compliance: 92.6%	Total Rwy 10 Jet Arrivals: 6 Total Rwy 28 Jet Departures: 12 Deviation Percentage of Total Jet Operations: .1% Compliance: 99.9%	Total Rwy 1R Jet Landings: 819 Total Rwy 19L Commercial Jet Departures: 95 Combined Deviation Percentage of Total Jet Operations⁴: 5.4% Combined Compliance⁴: 94.6%
Airport Flow North: 25,950 (69.7%) South: 1,290 (30.3%)		

Operational Totals for November 2024		Key
Total Jet Operations (All Runways):	16,965	¹ Includes: Scheduled and unscheduled runway closures ² Includes: Medivac flights, volume/wake separation, aircraft emergencies, and wildlife strike inspections ³ Flights operating at exactly 7a.m. and 10p.m. are included in both figures ⁴ Combined deviation percentages for both runways
Total Prop/Turboprop Operations (All Runways):	1,741	
Total North Flow Operations All Aircraft (Runway 1L & 1R):	12,886	
Total South Flow Operations All Aircraft (Runway 19R & 19L):	5,550	
All Aircraft Operations 7 a.m. -10 p.m.³:	16,498	
All Aircraft Operations 10 p.m. – 7a.m.³:	2,461	
Commercial Airline Deviations	80	
Construction/Maintenance-Related Deviations¹:	143	
FAA Assigned Deviations² (corporate & commercial jet combined):	41	
General Aviation Deviations⁵:	668	
Noise Complaints (Month/Year):	186 / 1,568	

Runway Map



Percentage of Jet Arrivals by Runway End (November 2024)



- **West Runway** Unavailable includes closures for maintenances and emergencies, among other factors.
- Total complaints based on complaints logged as of [November 31, 2024].
- Commercial Jet Aircrafts are: Boeing, Airbus, McDonald Douglas, Douglas Corporation, Bombardier and Embraer commercial aircraft.
- Pilot Request Deviations include commercial jet aircraft departures on Runway 19L and jet aircraft arrivals on Runway 1R.
- This data compiled from the noise office software provided by Casper Airport Solutions and may differ from official FAA monthly traffic counts.