

Tampa International Airport

Monthly Noise Monitoring Office Report

December 2024

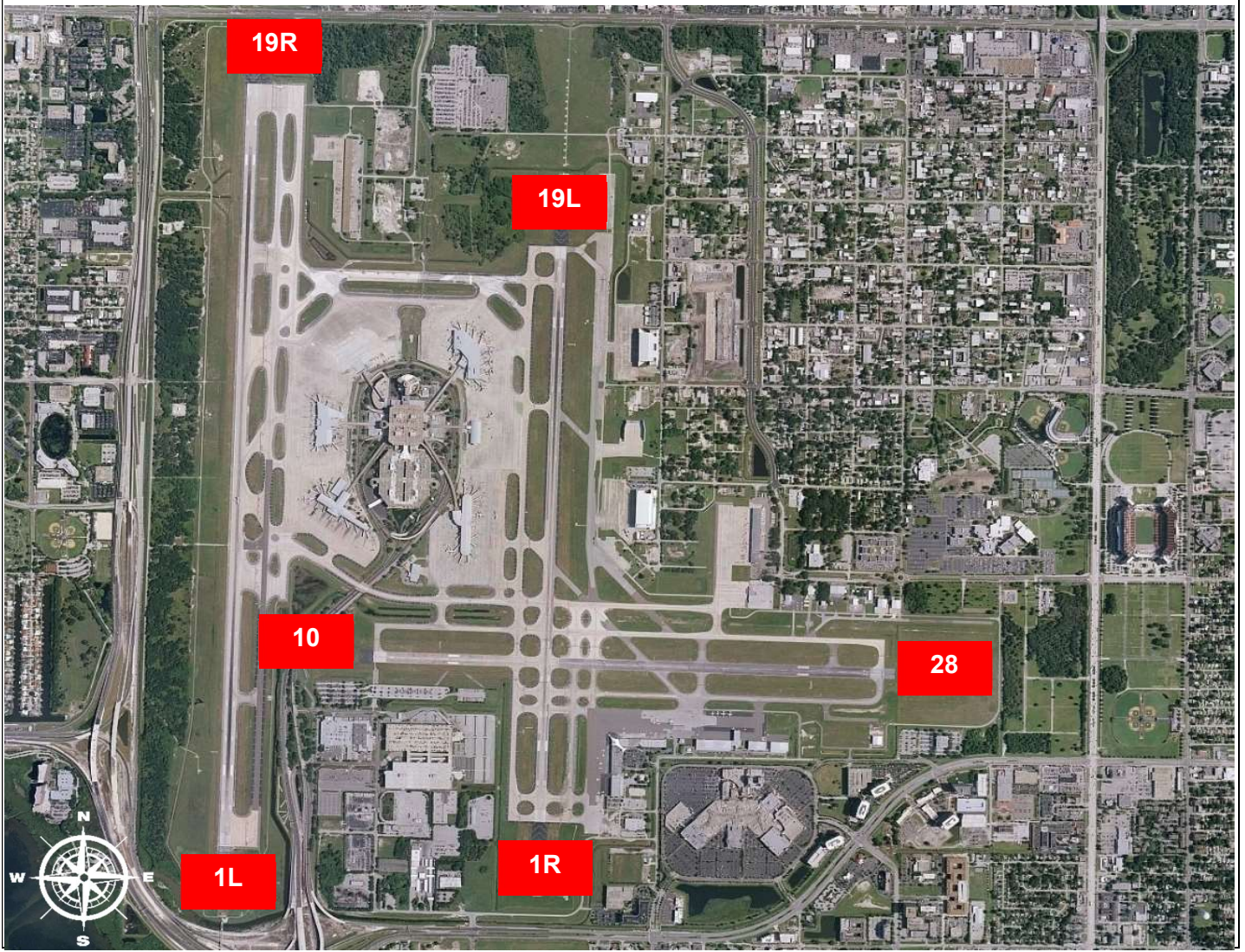


Monthly Noise Report	
Expected Operational Changes <ul style="list-style-type: none"> • FAA glass replacement project continues for the Air Traffic Control Tower. Temporary Tower to be used on east airfield if ATC needs to relocate during work, particularly for overnights (0000-0500) • Closure of 1R/19L beginning Jan 20th through Feb 4th 	Community Outreach <ul style="list-style-type: none"> • The next Community Noise Forum Meeting will be held virtually on Wednesday, February 5th, 2025 at 9:30 am.
For more information please visit: www.tampaairport.com/noise-abatement or call: (813) 870-7843	

Deviations		
North of Airport	West of Airport	South of Airport
<i>1L / 1R Departures – Westbound Aircraft Turns Below 3,000 ft.</i> Jet Aircraft Turns Below 3,000 ft.: 1,468 Deviation Percentage of Total North Flow Departures: 8.0% Compliance: 92.0%	<i>Runway 10-28 Arrivals / Departures</i> Total Rwy 10 Jet Arrivals: 2 Total Rwy 28 Jet Departures: 13 Deviation Percentage of Total Jet Operations: .1% Compliance: 99.9%	<i>Runway 1R Jet Arrivals and Runway 19L Commercial Jet Departures</i> Total Rwy 1R Jet Landings: 914 Total Rwy 19L Commercial Jet Departures: 92 Combined Deviation Percentage of Total Jet Operations⁴: 5.5% Combined Compliance⁴: 94.5%
Airport Flow North: 29,852 (74.9%) South: 9,984 (25.1%)		

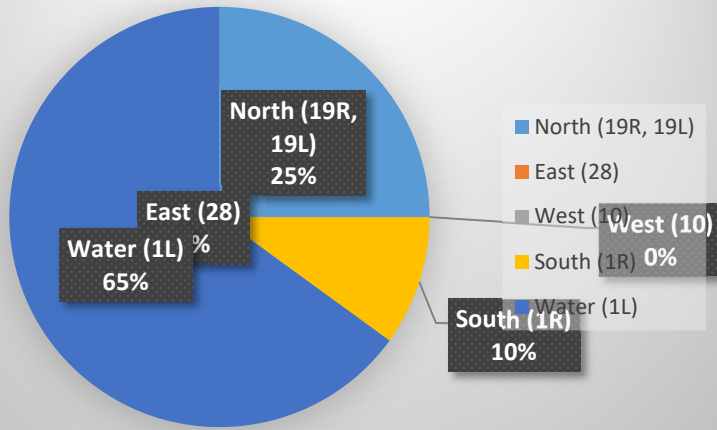
Operational Totals for December 2024		Key
Total Jet Operations (All Runways):	18,288	¹ Includes: Scheduled and unscheduled runway closures ² Includes: Medivac flights, volume/wake separation, aircraft emergencies, and wildlife strike inspections ³ Flights operating at exactly 7a.m. and 10p.m. are included in both figures ⁴ Combined deviation percentages for both runways
Total Prop/Turboprop Operations (All Runways):	1,678	
Total North Flow Operations All Aircraft (Runway 1L & 1R):	14,879	
Total South Flow Operations All Aircraft (Runway 19R & 19L):	4,914	
All Aircraft Operations 7 a.m. -10 p.m.³:	17,327	
All Aircraft Operations 10 p.m. – 7a.m.³:	2,882	
Commercial Airline Deviations	84	
Construction/Maintenance-Related Deviations¹:	115	
FAA Assigned Deviations² (corporate & commercial jet combined):	58	
General Aviation Deviations⁵:	764	
Noise Complaints (Month/Year):	212 / 1,780	

Runway Map



Percentage of Jet Arrivals by Runway End (December 2024)

Percent Jet Arrivals



- **West Runway** Unavailable includes closures for maintenances and emergencies, among other factors.
- Total complaints based on complaints logged as of [December 31, 2024].
- Commercial Jet Aircrafts are: Boeing, Airbus, McDonald Douglas, Douglas Corporation, Bombardier and Embraer commercial aircraft.
- Pilot Request Deviations include commercial jet aircraft departures on Runway 19L and jet aircraft arrivals on Runway 1R.
- This data compiled from the noise office software provided by Casper Airport Solutions and may differ from official FAA monthly traffic counts.