

# Tampa International Airport

## Monthly Noise Monitoring Office Report

### October 2024

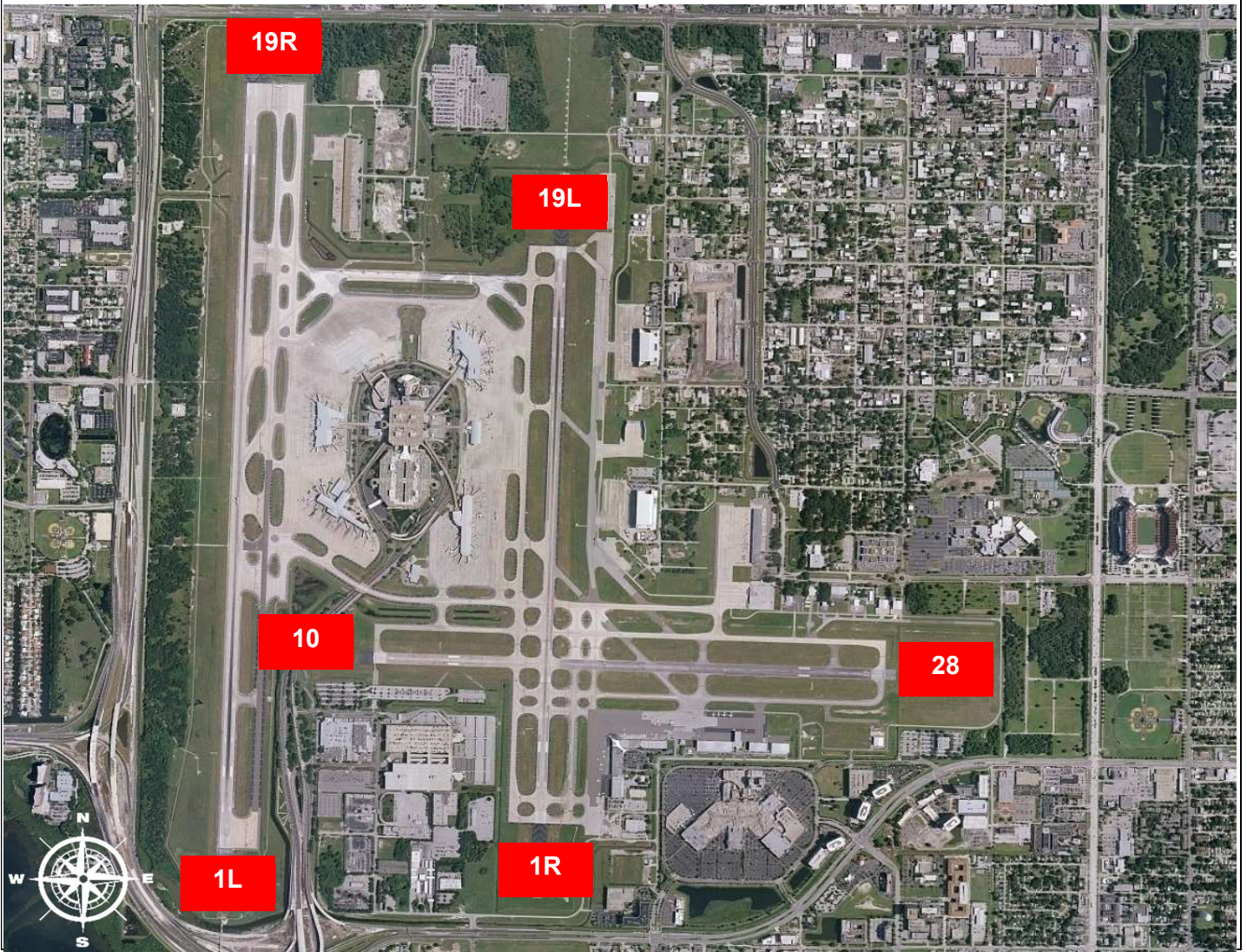


Monthly Noise Report	
Expected Operational Changes	Community Outreach
<ul style="list-style-type: none"> <li>• FAA glass replacement project continues for the Air Traffic Control Tower.</li> <li>• Temporary Tower to be used on east airfield if ATC needs to relocate during work, particularly for overnights (0000-0500)</li> </ul>	<ul style="list-style-type: none"> <li>• The next Community Noise Forum meeting is scheduled for Wednesday, November 27<sup>th</sup>, 2024 at 1:00 pm.</li> <li>• A community meeting was offered for Wednesday, Oct 23<sup>rd</sup>. However, no residents attended.</li> </ul>
For more information please visit: <a href="http://www.tampaairport.com/noise-abatement">www.tampaairport.com/noise-abatement</a> or call: (813) 870-7843	

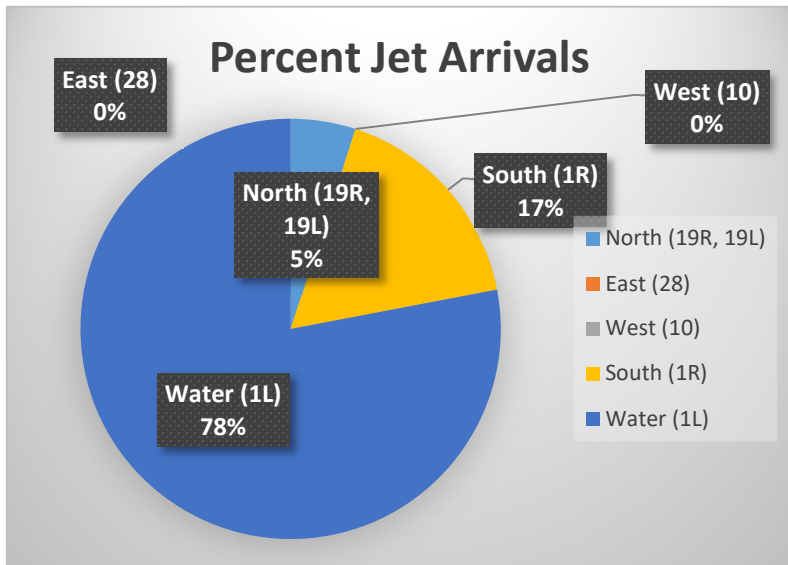
Deviations		
North of Airport	West of Airport	South of Airport
<i>1L / 1R Departures – Westbound Aircraft Turns Below 3,000 ft.</i>	<i>Runway 10-28 Arrivals / Departures</i>	<i>Runway 1R Jet Arrivals and Runway 19L Commercial Jet Departures</i>
<b>Jet Aircraft Turns Below 3,000 ft.: 1,956</b> <b>Deviation Percentage of Total North Flow Departures: 13.3%</b> <b>Compliance: 86.7%</b>	<b>Total Rwy 10 Jet Arrivals: 11</b> <b>Total Rwy 28 Jet Departures: 20</b> <b>Deviation Percentage of Total Jet Operations: .2%</b> <b>Compliance: 99.8%</b>	<b>Total Rwy 1R Jet Landings: 1,229</b> <b>Total Rwy 19L Commercial Jet Departures: 3</b> <b>Combined Deviation Percentage of Total Jet Operations****: 8.4%</b> <b>Combined Compliance****: 91.6%</b>

Operational Totals for June 2024		Key
<b>Total Jet Operations (All Runways):</b>	<b>14,675</b>	<p>* Includes: Scheduled runway closures, unscheduled runway closures, aircraft emergencies and wildlife strike inspections</p> <p>** Does not include Runway 10-28</p> <p>*** Flights operating at exactly 7a.m. and 10p.m. are included in both figures</p> <p>**** Combined deviation percentages for both runways</p>
<b>Total Prop/Turboprop Operations (All Runways):</b>	<b>1,751</b>	
<b>Total North Flow Operations All Aircraft (Runway 1L &amp; 1R):</b>	<b>15,419**</b>	
<b>Total South Flow Operations All Aircraft (Runway 19R &amp; 19L):</b>	<b>807**</b>	
<b>All Aircraft Operations 7 a.m. -10 p.m.:</b>	<b>14,339***</b>	
<b>All Aircraft Operations 10 p.m. – 7a.m.:</b>	<b>2,382***</b>	
<b>Total Pilot Request Deviations (corporate &amp; commercial jet combined):</b>	<b>TBD</b>	
<b>Total Preferred Runway Unavailable Deviations (corporate &amp; commercial jet combined):</b>	<b>TBD</b>	
<b>Total FAA Assigned Deviations (corporate &amp; commercial jet combined):</b>	<b>TBD</b>	
<b>Total Noise Complaints (Month/Year):</b>	<b>47 / 1,133</b>	

## Runway Map



## Percentage of Jet Arrivals by Runway End (October 2024)



- **West Runway** Unavailable includes closures for maintenances and emergencies, among other factors.
- Total complaints based on complaints logged as of [October 30, 2024].
- Commercial Jet Aircrafts are: Boeing, Airbus, McDonald Douglas, Douglas Corporation, Bombardier and Embraer commercial aircraft.
- Pilot Request Deviations include commercial jet aircraft departures on Runway 19L and jet aircraft arrivals on Runway 1R.
- This data compiled from the noise office software provided by Casper Airport Solutions and may differ from official FAA monthly traffic counts.