

# Tampa International Airport

## Monthly Noise Monitoring Office Report

### August 2024

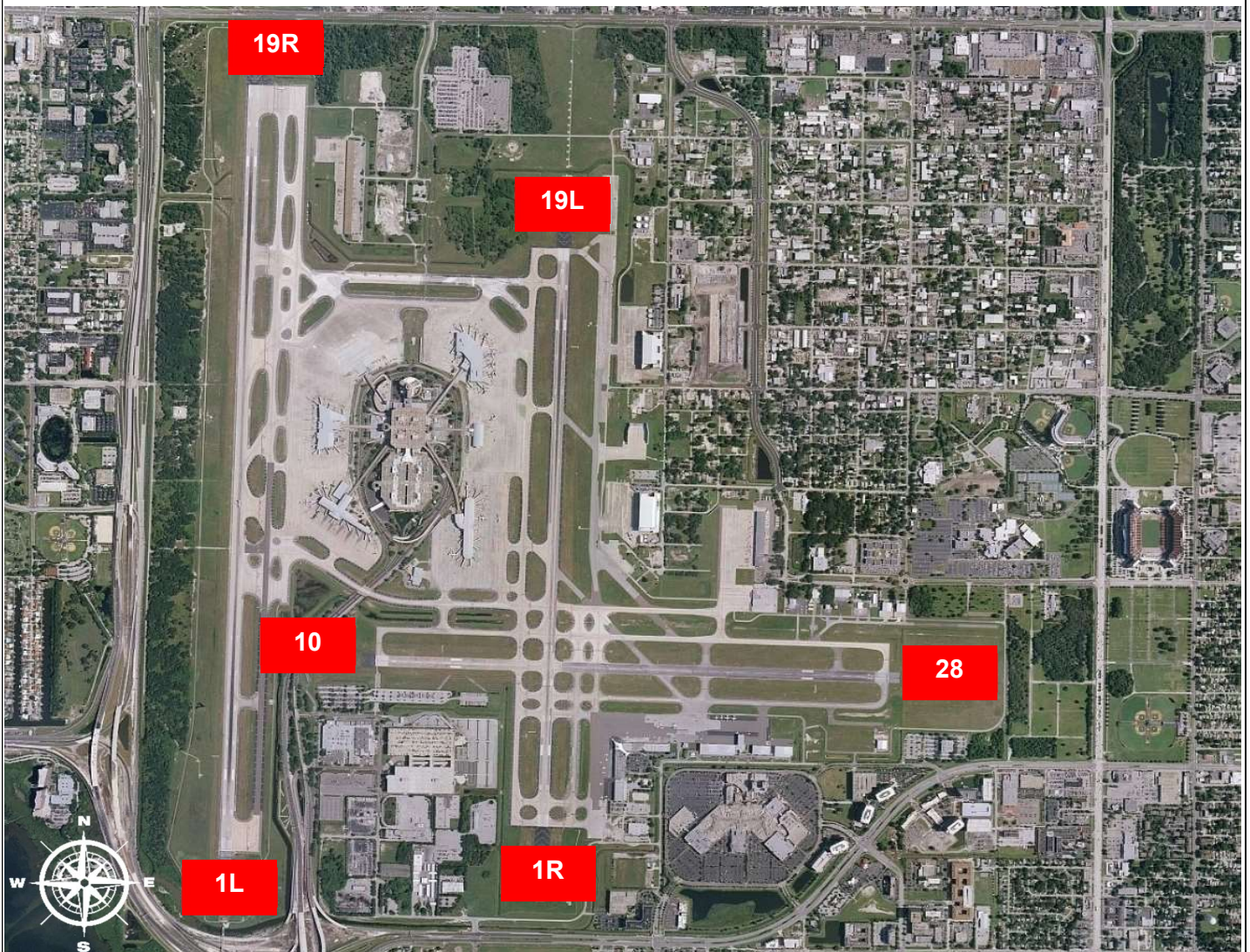


Monthly Noise Report	
Expected Operational Changes	Community Outreach
<ul style="list-style-type: none"> <li>September 9-16: FAA plans to begin the glass replacement process for the Air Traffic Control Tower.</li> <li>Temporary Tower to be used on east airfield if ATC needs to relocate during work</li> </ul>	<ul style="list-style-type: none"> <li>The next Community Noise Forum meeting is scheduled for September 18<sup>th</sup>, 2024 at 9:30 am.</li> <li>A special community meeting was held on August 28<sup>th</sup> to discuss the FAA's plans for replacing the ATC glass.</li> </ul>
For more information please visit: <a href="http://www.tampaairport.com/noise-abatement">www.tampaairport.com/noise-abatement</a> or call: (813) 870-7843	

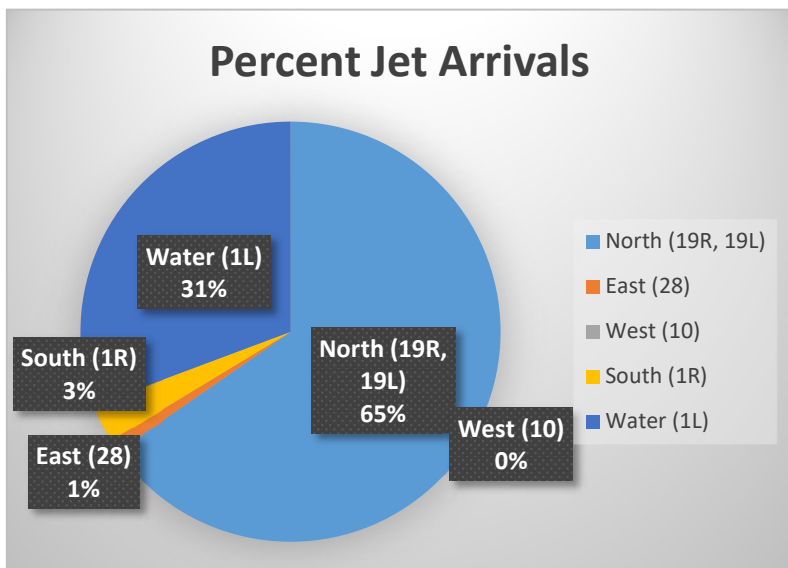
Deviations		
North of Airport	West of Airport	South of Airport
<i>1L / 1R Departures – Westbound Aircraft Turns Below 3,000 ft.</i>	<i>Runway 10-28 Arrivals / Departures</i>	<i>Runway 1R Jet Arrivals and Runway 19L Commercial Jet Departures</i>
<b>Jet Aircraft Turns Below 3,000 ft.: 663</b> <b>Deviation Percentage of Total North Flow Departures: 4.5%</b> <b>Compliance: 95.5%</b>	<b>Total Rwy 10 Jet Arrivals: 10</b> <b>Total Rwy 28 Jet Departures: 27</b> <b>Deviation Percentage of Total Jet Operations: .2%</b> <b>Compliance: 99.8%</b>	<b>Total Rwy 1R Jet Landings: 246</b> <b>Total Rwy 19L Commercial Jet Departures: 142</b> <b>Combined Deviation Percentage of Total Jet Operations****: 2.6%</b> <b>Combined Compliance****: 97.4%</b>

Operational Totals for June 2024		Key
<b>Total Jet Operations (All Runways):</b>	<b>14,848</b>	<p>* Includes: Scheduled runway closures, unscheduled runway closures, aircraft emergencies and wildlife strike inspections</p> <p>** Does not include Runway 10-28</p> <p>*** Flights operating at exactly 7a.m. and 10p.m. are included in both figures</p> <p>**** Combined deviation percentages for both runways</p>
<b>Total Prop/Turboprop Operations (All Runways):</b>	<b>1,622</b>	
<b>Total North Flow Operations All Aircraft (Runway 1L &amp; 1R):</b>	<b>5,509**</b>	
<b>Total South Flow Operations All Aircraft (Runway 19R &amp; 19L):</b>	<b>10,563**</b>	
<b>All Aircraft Operations 7 a.m. -10 p.m.:</b>	<b>14,169***</b>	
<b>All Aircraft Operations 10 p.m. – 7a.m.:</b>	<b>2,456***</b>	
<b>Total Pilot Request Deviations (corporate &amp; commercial jet combined):</b>	<b>53</b>	
<b>Total Preferred Runway Unavailable Deviations (corporate &amp; commercial jet combined):</b>	<b>101</b>	
<b>Total FAA Assigned Deviations (corporate &amp; commercial jet combined):</b>	<b>271</b>	
<b>Total Noise Complaints (Month/Year):</b> Note: Complaints for January 2024 do not include complaints that were text to the Airport through our texting system, due to an access issue to the system.	<b>154 / 1,212</b>	

## Runway Map



## Percentage of Jet Arrivals by Runway End (July 2024)



- **West Runway** Unavailable includes closures for maintenances and emergencies, among other factors.
- Total complaints based on complaints logged as of [August 31, 2024].
- Commercial Jet Aircrafts are: Boeing, Airbus, McDonald Douglas, Douglas Corporation, Bombardier and Embraer commercial aircraft.
- Pilot Request Deviations include commercial jet aircraft departures on Runway 19L and jet aircraft arrivals on Runway 1R.
- This data compiled from the noise office software provided by Casper Airport Solutions and may differ from official FAA monthly traffic counts.