

Tampa International Airport

Monthly Noise Monitoring Office Report

July 2024

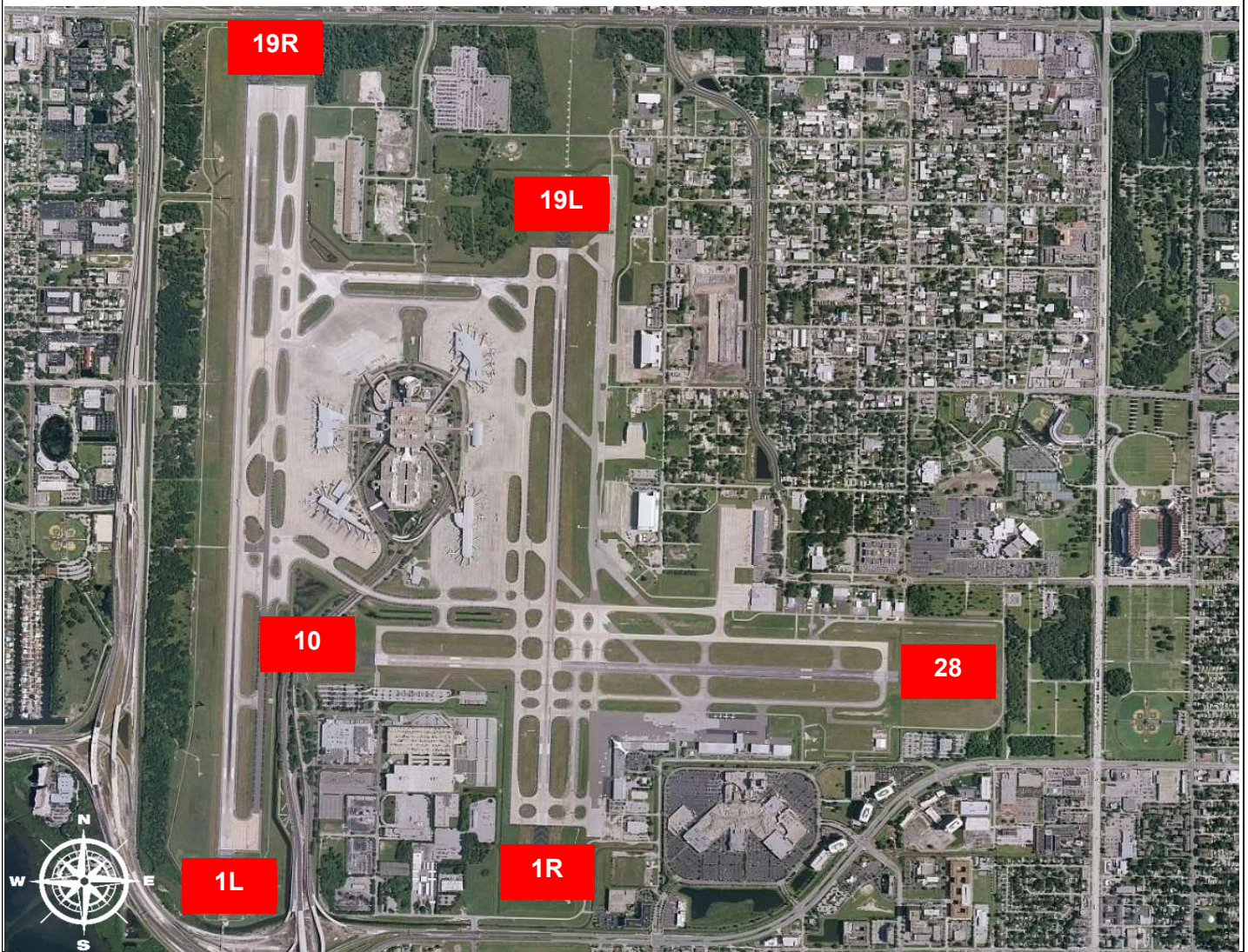


Monthly Noise Report	
Expected Operational Changes	Community Outreach
<ul style="list-style-type: none"> There are currently no significant planned closures of preferred runways for August outside of regularly scheduled routine maintenance. 	<ul style="list-style-type: none"> A Community Noise Forum meeting was held virtually on July 24th, 2024.
For more information please visit: www.tampaairport.com/noise-abatement or call: (813) 870-7843	

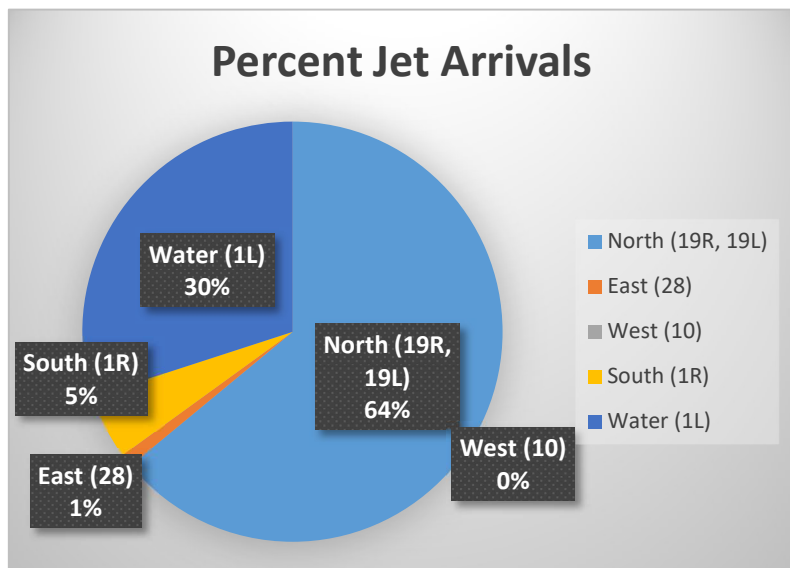
Deviations		
North of Airport	West of Airport	South of Airport
<i>1L / 1R Departures – Westbound Aircraft Turns Below 3,000 ft.</i>	<i>Runway 10-28 Arrivals / Departures</i>	<i>Runway 1R Jet Arrivals and Runway 19L Commercial Jet Departures</i>
Jet Aircraft Turns Below 3,000 ft.: 301 Deviation Percentage of Total North Flow Departures: 1.9% Compliance: 98.1%	Total Rwy 10 Jet Arrivals: 10 Total Rwy 28 Jet Departures: 29 Deviation Percentage of Total Jet Operations: .3% Compliance: 99.7%	Total Rwy 1R Jet Landings: 374 Total Rwy 19L Commercial Jet Departures: 346 Combined Deviation Percentage of Total Jet Operations****: 4.6% Combined Compliance****: 95.4%

Operational Totals for June 2024		Key
Total Jet Operations (All Runways):	15,573	<p>* Includes: Scheduled runway closures, unscheduled runway closures, aircraft emergencies and wildlife strike inspections</p> <p>** Does not include Runway 10-28</p> <p>*** Flights operating at exactly 7a.m. and 10p.m. are included in both figures</p> <p>**** Combined deviation percentages for both runways</p>
Total Prop/Turboprop Operations (All Runways):	1,679	
Total North Flow Operations All Aircraft (Runway 1L & 1R):	5,584**	
Total South Flow Operations All Aircraft (Runway 19R & 19L):	11,265**	
All Aircraft Operations 7 a.m. -10 p.m.:	14,228***	
All Aircraft Operations 10 p.m. – 7a.m.:	3,229***	
Total Pilot Request Deviations (corporate & commercial jet combined):	21	
Total Preferred Runway Unavailable Deviations (corporate & commercial jet combined):	396	
Total FAA Assigned Deviations (corporate & commercial jet combined):	342	
Total Noise Complaints (Month/Year): Note: Complaints for January 2024 do not include complaints that were text to the Airport through our texting system, due to an access issue to the system.	158 / 754	

Runway Map



Percentage of Jet Arrivals by Runway End (July 2024)



- **West Runway** Unavailable includes closures for maintenances and emergencies, among other factors.
- Total complaints based on complaints logged as of [August 1, 2024].
- Commercial Jet Aircrafts are: Boeing, Airbus, McDonald Douglas, Douglas Corporation, Bombardier and Embraer commercial aircraft.
- Pilot Request Deviations include commercial jet aircraft departures on Runway 19L and jet aircraft arrivals on Runway 1R.
- This data compiled from the noise office software provided by Casper Airport Solutions and may differ from official FAA monthly traffic counts.