

# Tampa International Airport

## Monthly Noise Monitoring Office Report

### January 2024



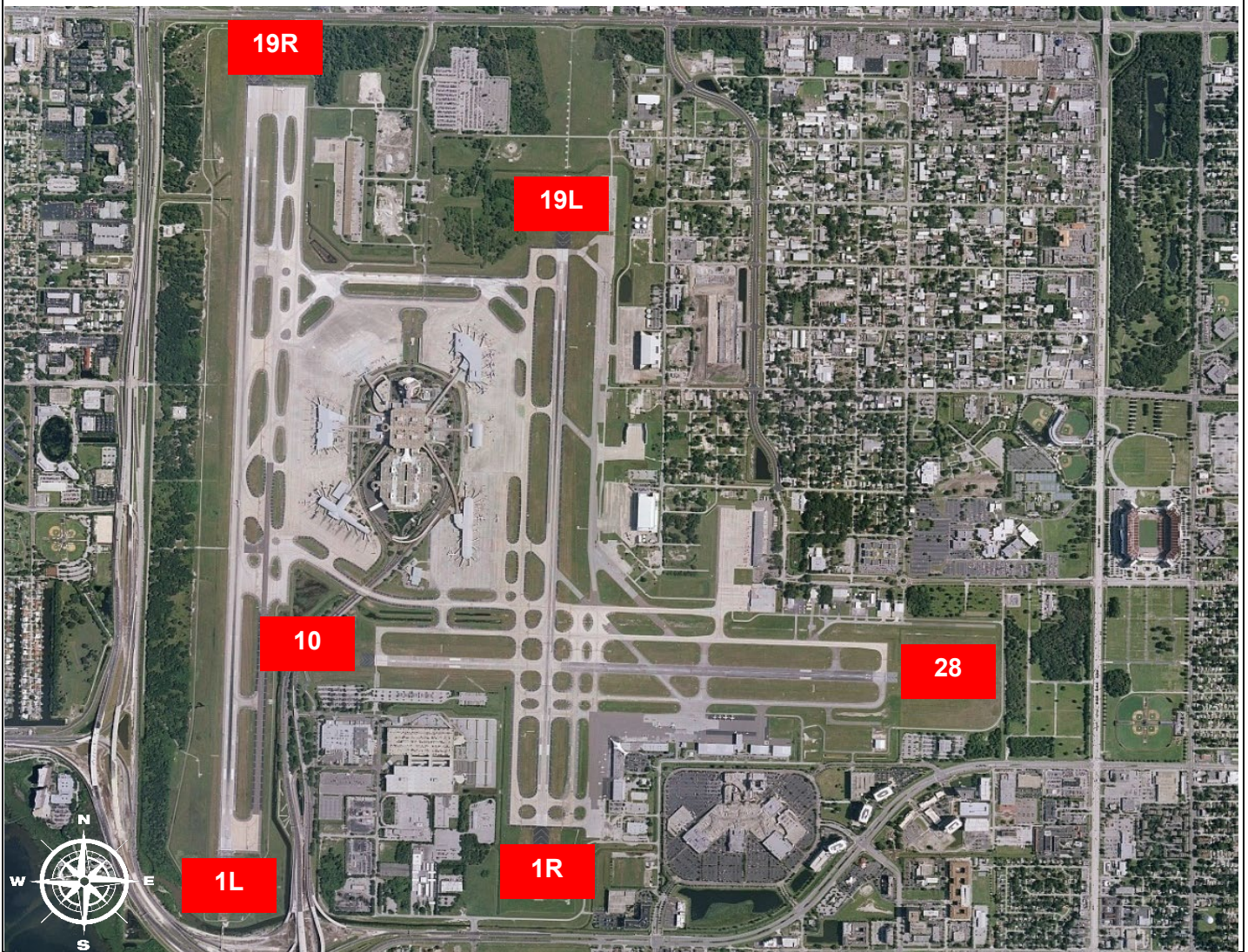
Monthly Noise Report	
Operational Impacts	Community Outreach
<ul style="list-style-type: none"> <li>Runway 1L-19R will be closed on Wednesday, January 10, from 7:00 a.m. until 3:00 p.m. for required maintenance.</li> <li>Runway 1R-19L will be closed on January 11, from 7:00 a.m. until 3:00 p.m. for required maintenance.</li> <li>Runway 1L-19R will be closed on Friday, January 19, 2024, from 7:00 a.m. until 3:00 p.m. for required maintenance.</li> <li>Runway 1L-19R will be closed on Tuesday, January 23, from 8:00 a.m. until 5:00 p.m. for required maintenance.</li> </ul>	<ul style="list-style-type: none"> <li>Two Community Noise Forum meetings will be held on January 18, 2024.</li> </ul>
For more information please visit: <a href="http://www.tampaairport.com/noise-abatement">www.tampaairport.com/noise-abatement</a> or call: (813) 870-7843	

Deviations		
North of Airport	West of Airport	South of Airport
1L / 1R Departures – Westbound Aircraft Turns Below 3,000 ft.	Runway 10-28 Arrivals / Departures	Runway 1R Jet Arrivals and Runway 19L Commercial Jet Departures
Jet Aircraft Turns Below 3,000 ft.: <b>739</b>	Total Runway 10 Jet Arrivals: <b>3</b>	Total Runway 1R Jet Landings: <b>865</b>
Deviation Percentage of Total North Flow Departures: <b>17%</b>	Total Runway 28 Jet Departures: <b>22</b>	Total Runway 19L Commercial Jet Departures: <b>478</b>
Compliance: <b>83%</b>	Deviation Percentage of Total Jet Operations: <b>.1%</b>	Combined Deviation Percentage of Total Jet Operations****: <b>8%</b>
	Compliance: <b>99.9%</b>	Combined Compliance****: <b>92%</b>

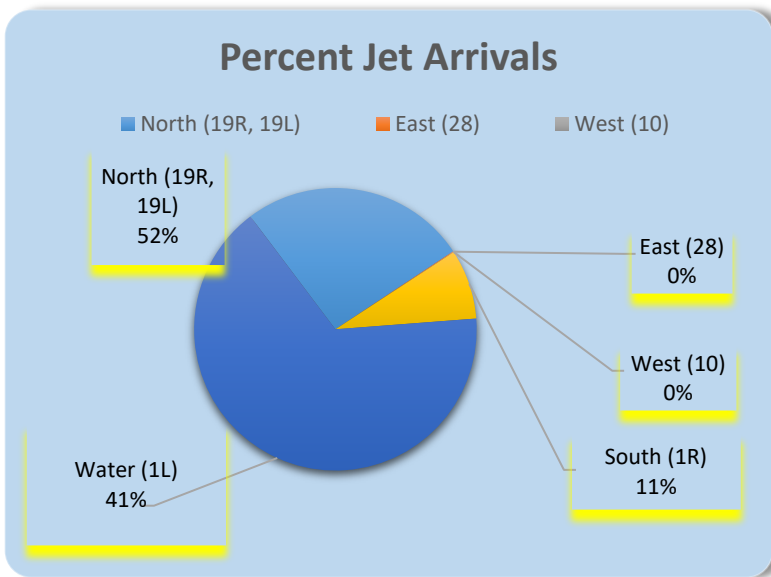
Operational Totals for January 2024	
Total Jet Operations (All Runways):	16,313
Total Prop/Turboprop Operations (All Runways):	1,264
Total North Flow Operations All Aircraft (Runway 1L & 1R):	8,102**
Total South Flow Operations All Aircraft (Runway 19R & 19L):	9,229**
All Aircraft Operations 7 a.m. -10 p.m.:	14,796***
All Aircraft Operations 10 p.m. – 7a.m.:	2,535***
Total Pilot Request Deviations (corporate & commercial jet combined):	275
Total Preferred Runway Unavailable Deviations (corporate & commercial jet combined):	97
Total FAA Assigned Deviations (corporate & commercial jet combined):	724
Total Noise Complaints (Month/Year): Note: Complaints for January 2024 do not include complaints that were text to the Airport through our texting system, due to an access issue to the system.	151/151

Key
* Includes: Scheduled runway closures, unscheduled runway closures, aircraft emergencies and wildlife strike inspections
** Does not include Runway 10-28
*** Flights operating at exactly 7a.m. and 10p.m. are included in both figures
**** Combined deviation percentages for both runways

## Runway Map



## Percentage of Jet Arrivals by Runway End (December 2023)



- Runway Closures: **1R/19L**
- **West Runway** Unavailable includes closures for maintenances and emergencies, among other factors.
- Total complaints based on complaints logged as of [November 30<sup>th</sup>, 2023].
- Commercial Jet Aircrafts are: Boeing, Airbus, McDonald Douglas, Douglas Corporation, Bombardier and Embraer commercial aircraft.
- Pilot Request Deviations include commercial jet aircraft departures on Runway 19L and jet aircraft arrivals on Runway 1R.
- This data compiled from the noise office software provided by Casper Airport Solutions and may differ from official FAA monthly traffic counts.