

Tampa International Airport

Monthly Noise Monitoring Office Report

February 2024



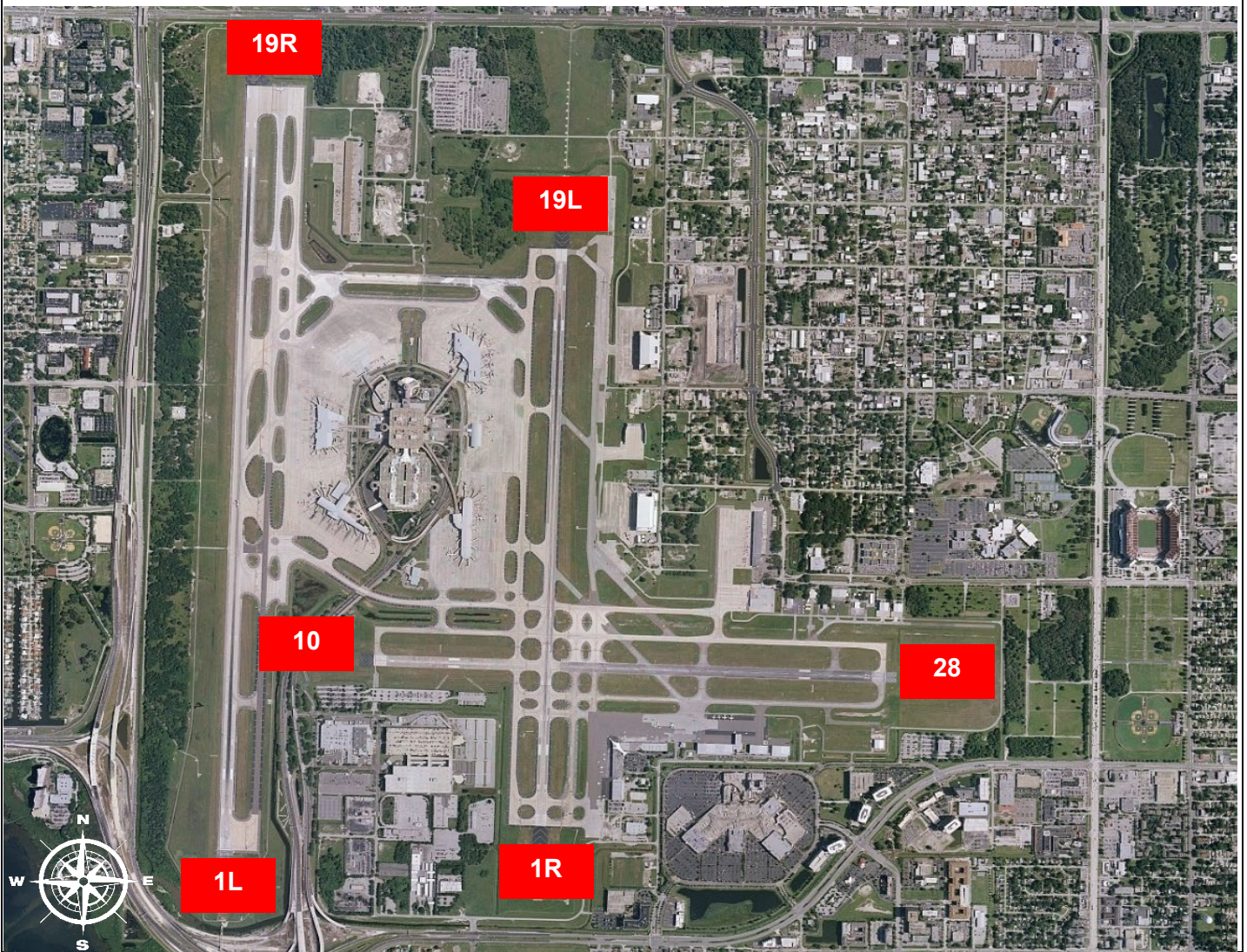
Monthly Noise Report	
Operational Impacts	Community Outreach
<ul style="list-style-type: none"> Runway 1L-19R will be closed on Tuesday, February 20, 2024, from 7:00 a.m. until 3:00 p.m. for required maintenance. Runway 1L-19R will be closed on Tuesday, February 27, 2024, from 8:00 a.m. until 9:30 a.m. for the Airport's annual Federal Aviation Administration Certification Safety Inspection. 	<ul style="list-style-type: none"> Two Community Noise Forum meetings will be held on March 14, 2024.
For more information please visit: www.tampaairport.com/noise-abatement or call: (813) 870-7843	

Deviations		
North of Airport	West of Airport	South of Airport
<i>1L / 1R Departures – Westbound Aircraft Turns Below 3,000 ft.</i>	<i>Runway 10-28 Arrivals / Departures</i>	<i>Runway 1R Jet Arrivals and Runway 19L Commercial Jet Departures</i>
Jet Aircraft Turns Below 3,000 ft.: 843 Deviation Percentage of Total North Flow Departures: 19% Compliance: 81%	Total Runway 10 Jet Arrivals: 3 Total Runway 28 Jet Departures: 46 Deviation Percentage of Total Jet Operations: .2% Compliance: 99.8%	Total Runway 1R Jet Landings: 600 Total Runway 19L Commercial Jet Departures: 62 Combined Deviation Percentage of Total Jet Operations****: 11% Combined Compliance****: 89%

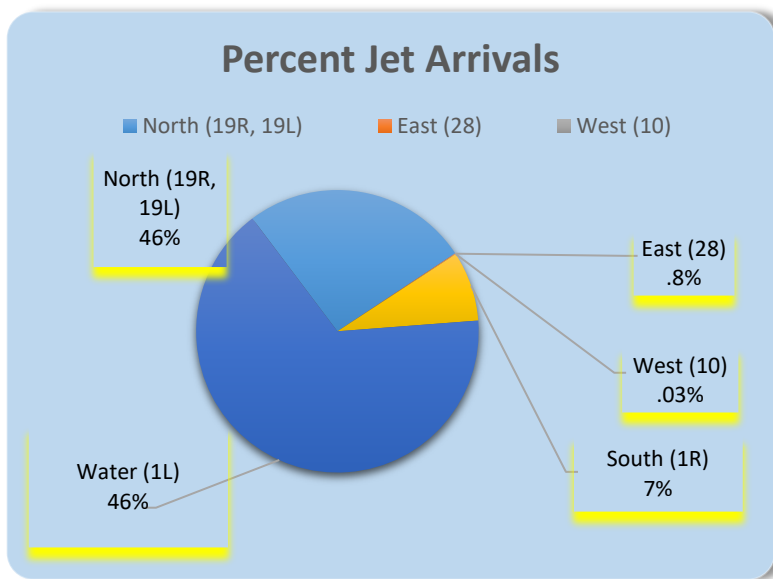
Operational Totals for February 2024	
Total Jet Operations (All Runways):	16,324
Total Prop/Turboprop Operations (All Runways):	1,461
Total North Flow Operations All Aircraft (Runway 1L & 1R):	4,691**
Total South Flow Operations All Aircraft (Runway 19R & 19L):	4,017**
All Aircraft Operations 7 a.m. -10 p.m.:	14,059***
All Aircraft Operations 10 p.m. – 7a.m.:	2,535***
Total Pilot Request Deviations (corporate & commercial jet combined):	356
Total Preferred Runway Unavailable Deviations (corporate & commercial jet combined):	21
Total FAA Assigned Deviations (corporate & commercial jet combined):	332
Total Noise Complaints (Month/Year): Note: Complaints for February 2024 do not include complaints that were text to the Airport through our texting system, due to an access issue to the system.	72/225

Key
* Includes: Scheduled runway closures, unscheduled runway closures, aircraft emergencies and wildlife strike inspections
** Does not include Runway 10-28
*** Flights operating at exactly 7a.m. and 10p.m. are included in both figures
**** Combined deviation percentages for both runways

Runway Map



Percentage of Jet Arrivals by Runway End (February 2024)



- Runway Closures: **1R/19L**
- **West Runway** Unavailable includes closures for maintenances and emergencies, among other factors.
- Total complaints based on complaints logged as of [November 30th, 2023].
- Commercial Jet Aircrafts are: Boeing, Airbus, McDonald Douglas, Douglas Corporation, Bombardier and Embraer commercial aircraft.
- Pilot Request Deviations include commercial jet aircraft departures on Runway 19L and jet aircraft arrivals on Runway 1R.
- This data compiled from the noise office software provided by Casper Airport Solutions and may differ from official FAA monthly traffic counts.