

# Tampa International Airport

## Monthly Noise Monitoring Office Report

### April 2024



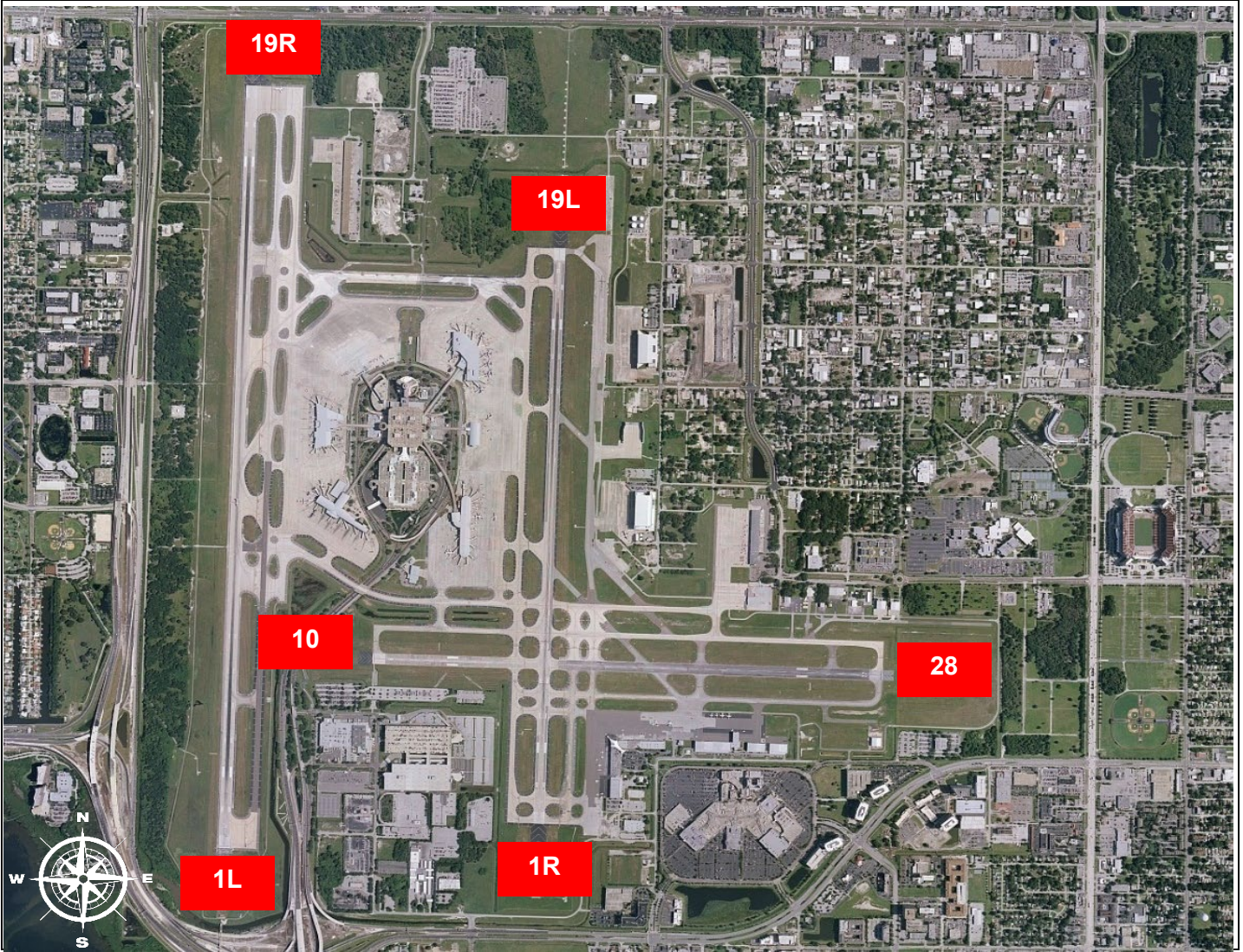
Monthly Noise Report	
Operational Impacts	Community Outreach
<ul style="list-style-type: none"> <li>Runway 1L-19R will be closed on Tuesday, April 2, 2024, from 7:00 a.m. until 3:00 p.m. for required maintenance.</li> <li>Runway 1R-19L will be closed on Wednesday, April 24, 2024, from 7:00 a.m. until 3:00 p.m. for required maintenance.</li> <li>Runway 1L-19R closure scheduled for Tuesday, April 23, 2024, has been rescheduled, and will now take place on Monday, April 29, 2024, from 7:00 a.m. until 3:00 p.m.</li> </ul>	<ul style="list-style-type: none"> <li>Two Community Noise Forum meetings will be held on May 21, 2024.</li> </ul>
For more information please visit: <a href="http://www.tampaairport.com/noise-abatement">www.tampaairport.com/noise-abatement</a> or call: (813) 870-7843	

Deviations		
North of Airport	West of Airport	South of Airport
1L / 1R Departures – Westbound Aircraft Turns Below 3,000 ft.	Runway 10-28 Arrivals / Departures	Runway 1R Jet Arrivals and Runway 19L Commercial Jet Departures
Jet Aircraft Turns Below 3,000 ft.: <b>621</b>	Total Runway 10 Jet Arrivals: <b>9</b>	Total Runway 1R Jet Landings: <b>401</b>
Deviation Percentage of Total North Flow Departures: <b>14%</b>	Total Runway 28 Jet Departures: <b>27</b>	Total Runway 19L Commercial Jet Departures: <b>219</b>
Compliance: <b>86%</b>	Deviation Percentage of Total Jet Operations: <b>.2%</b>	Combined Deviation Percentage of Total Jet Operations****: <b>3%</b>
	Compliance: <b>99.8%</b>	Combined Compliance****: <b>97%</b>

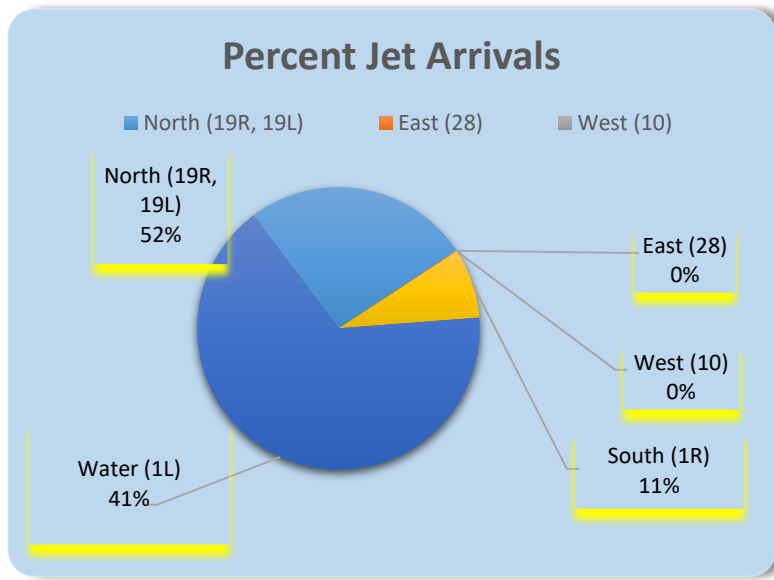
Operational Totals for January 2024	
Total Jet Operations (All Runways):	16,862
Total Prop/Turboprop Operations (All Runways):	1,569
Total North Flow Operations All Aircraft (Runway 1L & 1R):	9,140**
Total South Flow Operations All Aircraft (Runway 19R & 19L):	8,894**
All Aircraft Operations 7 a.m. -10 p.m.:	15,398***
All Aircraft Operations 10 p.m. – 7a.m.:	3,033***
Total Pilot Request Deviations (corporate & commercial jet combined):	362
Total Preferred Runway Unavailable Deviations (corporate & commercial jet combined):	0
Total FAA Assigned Deviations (corporate & commercial jet combined):	256
Total Noise Complaints (Month/Year): Note: Complaints for January 2024 do not include complaints that were texted to the Airport through our texting system, due to an access issue to the system.	57 / 431

Key
* Includes: Scheduled runway closures, unscheduled runway closures, aircraft emergencies and wildlife strike inspections
** Does not include Runway 10-28
*** Flights operating at exactly 7a.m. and 10p.m. are included in both figures
**** Combined deviation percentages for both runways

## Runway Map



## Percentage of Jet Arrivals by Runway End (April 2024)



- Runway Closures: **1R/19L**
- **West Runway** Unavailable includes closures for maintenances and emergencies, among other factors.
- Total complaints based on complaints logged as of [November 30<sup>th</sup>, 2023].
- Commercial Jet Aircrafts are: Boeing, Airbus, McDonnell Douglas, Douglas Corporation, Bombardier and Embraer commercial aircraft.
- Pilot Request Deviations include commercial jet aircraft departures on Runway 19L and jet aircraft arrivals on Runway 1R.
- This data compiled from the noise office software provided by Casper Airport Solutions and may differ from official FAA monthly traffic counts.