

Tampa International Airport

Monthly Noise Monitoring Office Report

September 2023



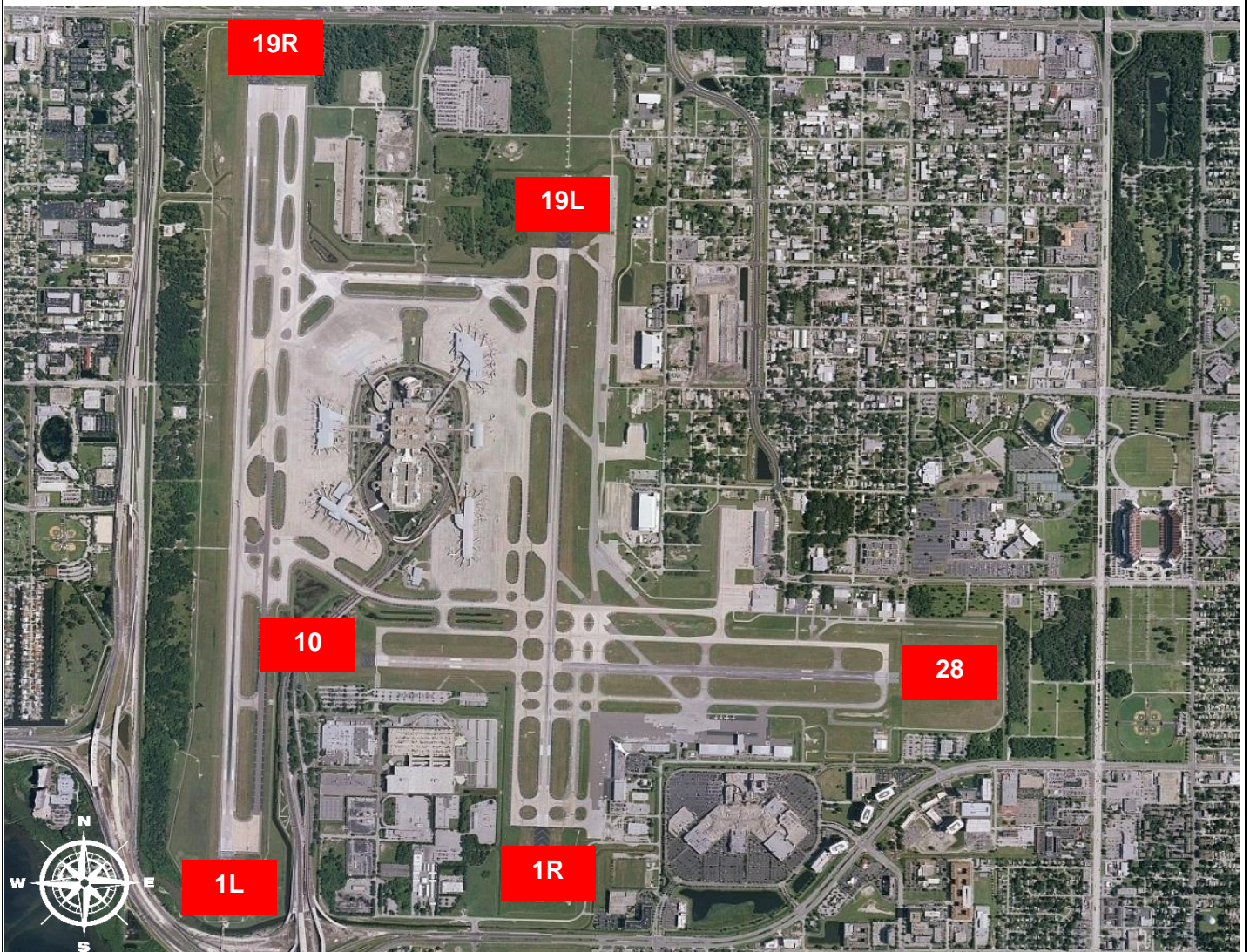
Monthly Noise Report	
Operational Impacts	Community Outreach
<ul style="list-style-type: none"> Runway 1L-19R was closed on September 5th and 19th 2023 for various maintenance activities. Runway 1R-19L was closed on September 6th, 2023, for various maintenance activities. Runway 1R-19L was closed continuously for various maintenance activities on September 26th, 2023. 	<ul style="list-style-type: none"> A Community Noise Forum meeting was held on September 21st, 2023.
For more information please visit: www.tampaairport.com/noise-abatement or call: (813) 870-7843	

Deviations		
North of Airport	West of Airport	South of Airport
1L / 1R Departures – Westbound Aircraft Turns Below 3,000 ft.	Runway 10-28 Arrivals / Departures	Runway 1R Jet Arrivals and Runway 19L Commercial Jet Departures
Jet Aircraft Turns Below 3,000 ft.: 1,423 Deviation Percentage of Total North Flow Departures: 28% Compliance: 72%	Total Runway 10 Jet Arrivals: 5 Deviation Percentage of Total Jet Operations: .1% Compliance: 99.9%	Total Runway 1R Jet Landings: 484 Total Runway 19L Commercial Jet Departures: 35 Combined Deviation Percentage of Total Jet Operations****: 3.6% Combined Compliance****: 96.4%

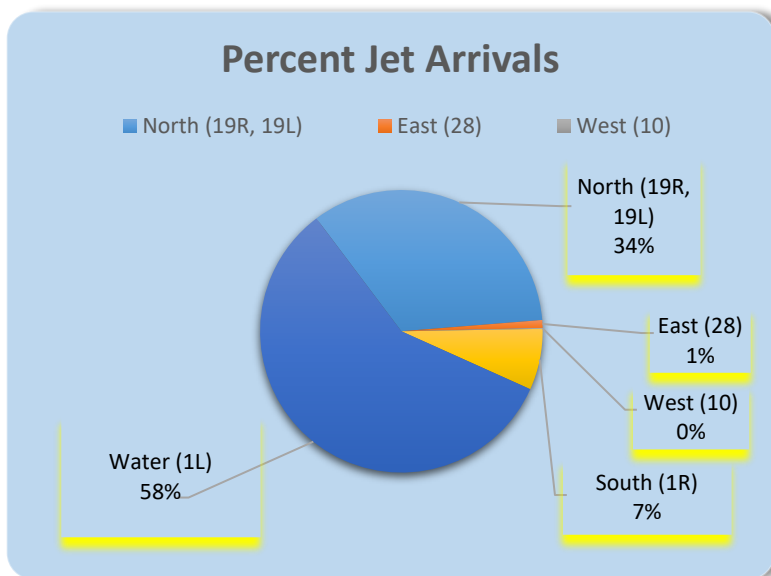
Operational Totals for September 2023	
Total Jet Operations (All Runways):	14,392
Total Prop/Turboprop Operations (All Runways):	1,397
Total North Flow Operations All Aircraft (Runway 1L & 1R):	10,046**
Total South Flow Operations All Aircraft (Runway 19R & 19L):	5,349**
All Aircraft Operations 7 a.m. -10 p.m.:	13,142***
All Aircraft Operations 10 p.m. – 7a.m.:	2,621***
Total Pilot Request Deviations (corporate & commercial jet combined):	318
Total Preferred Runway Unavailable Deviations (corporate & commercial jet combined):	142
Total FAA Assigned Deviations (corporate & commercial jet combined):	92
Total Noise Complaints (Month/Year):	218 / 2,028

Key
* Includes: Scheduled runway closures, unscheduled runway closures, aircraft emergencies and wildlife strike inspections
** Does not include Runway 10-28
*** Flights operating at exactly 7a.m. and 10p.m. are included in both figures
**** Combined deviation percentages for both runways

Runway Map



Percentage of Jet Arrivals by Runway End (September 2023)



- Runway Closures: **1R/19L**
- **West Runway** Unavailable includes closures for maintenances and emergencies, among other factors.
- Total complaints based on complaints logged as of [September 30th, 2023].
- Commercial Jet Aircrafts are: Boeing, Airbus, McDonald Douglas, Douglas Corporation, Bombardier and Embraer commercial aircraft.
- Pilot Request Deviations include commercial jet aircraft departures on Runway 19L and jet aircraft arrivals on Runway 1R.
- This data compiled from the noise office software provided by Casper Airport Solutions and may differ from official FAA monthly traffic counts.