

# Tampa International Airport

## Monthly Noise Monitoring Office Report

### October 2023



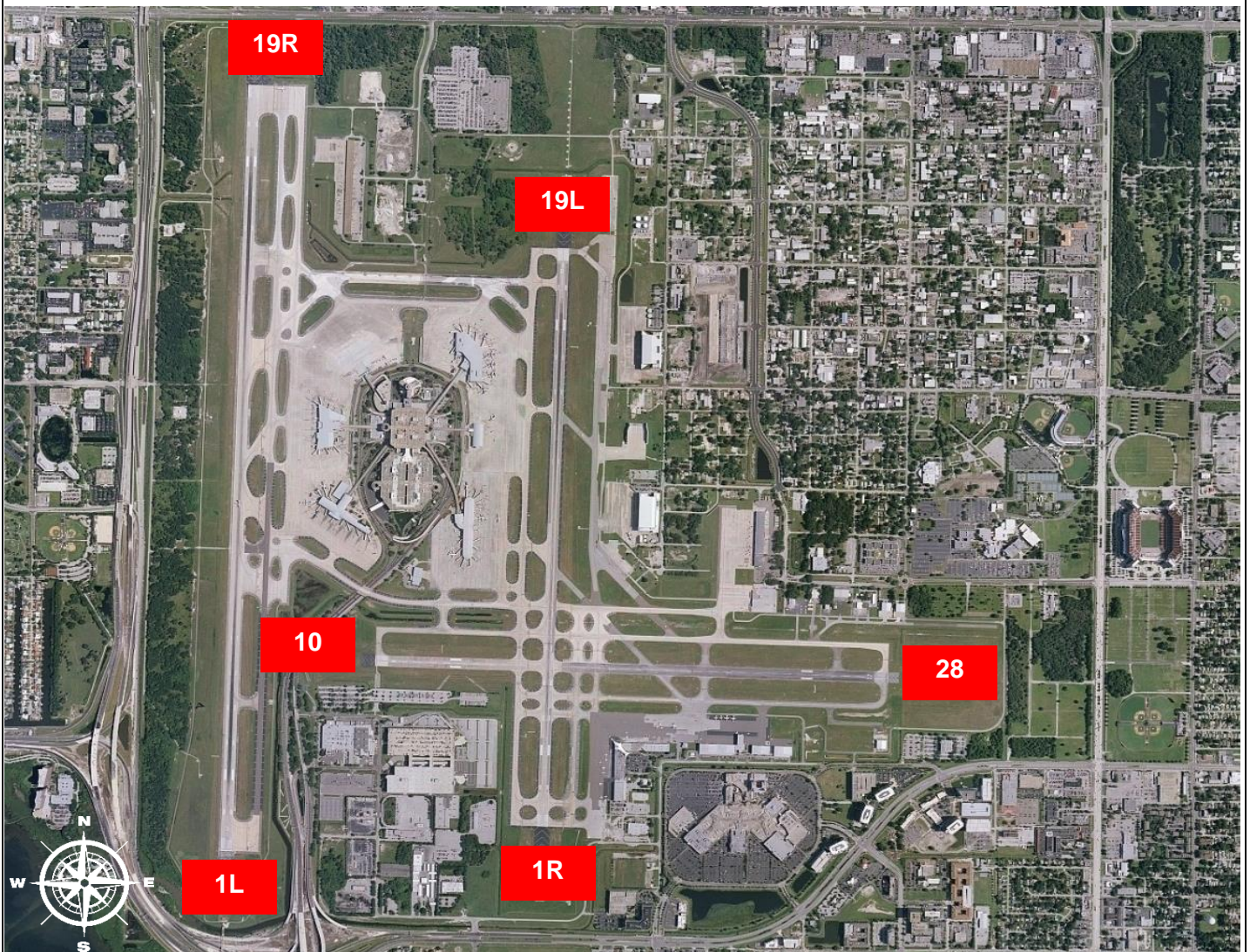
Monthly Noise Report	
Operational Impacts	Community Outreach
<ul style="list-style-type: none"> <li>Runway 1L-19R was closed on October 17<sup>th</sup>, 2023, for various maintenance activities.</li> <li>Runway 1R-19L was closed continuously for various maintenance activities from September 26<sup>th</sup>, 2023, to October 10<sup>th</sup>, 2023.</li> <li>Runway 10-28 was closed continuously for various maintenance activities from October 18<sup>th</sup>, 2023, to October 31<sup>st</sup>, 2023.</li> </ul>	<ul style="list-style-type: none"> <li>A Community Noise Forum meeting is scheduled for November 16<sup>th</sup>, 2023.</li> </ul>
For more information please visit: <a href="http://www.tampaairport.com/noise-abatement">www.tampaairport.com/noise-abatement</a> or call: (813) 870-7843	

Deviations		
North of Airport	West of Airport	South of Airport
<i>1L / 1R Departures – Westbound Aircraft Turns Below 3,000 ft.</i>	<i>Runway 10-28 Arrivals / Departures</i>	<i>Runway 1R Jet Arrivals and Runway 19L Commercial Jet Departures</i>
<b>Jet Aircraft Turns Below 3,000 ft.: 2411</b> <b>Deviation Percentage of Total North Flow Departures: 53%</b> <b>Compliance: 47%</b>	<b>Total Runway 10 Jet Arrivals: 12</b> <b>Deviation Percentage of Total Jet Operations: .1%</b> <b>Compliance: 99.9%</b>	<b>Total Runway 1R Jet Landings: 676</b> <b>Total Runway 19L Commercial Jet Departures: 9</b> <b>Combined Deviation Percentage of Total Jet Operations****: 4%</b> <b>Combined Compliance****: 96%</b>

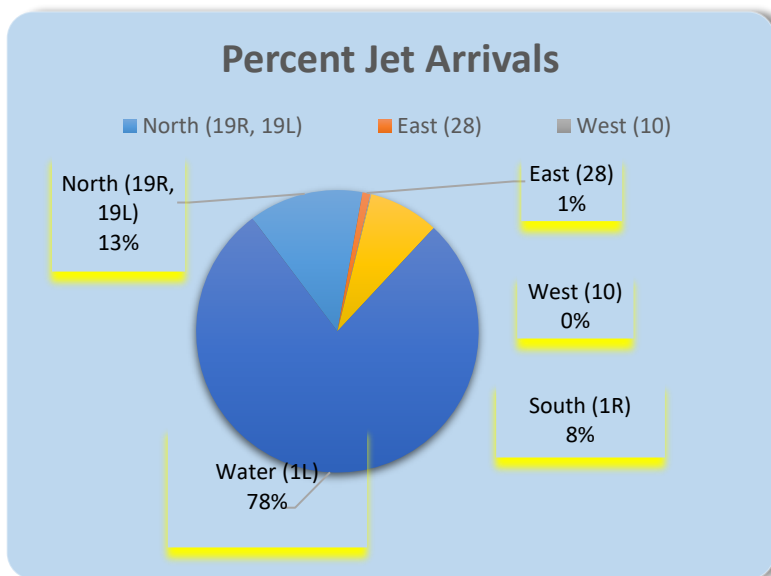
Operational Totals for October 2023	
<b>Total Jet Operations (All Runways):</b>	<b>17,104</b>
<b>Total Prop/Turboprop Operations (All Runways):</b>	<b>1,486</b>
<b>Total North Flow Operations All Aircraft (Runway 1L &amp; 1R):</b>	<b>15,626**</b>
<b>Total South Flow Operations All Aircraft (Runway 19R &amp; 19L):</b>	<b>2,270**</b>
<b>All Aircraft Operations 7 a.m. -10 p.m.:</b>	<b>15,725***</b>
<b>All Aircraft Operations 10 p.m. – 7a.m.:</b>	<b>2,842***</b>
<b>Total Pilot Request Deviations (corporate &amp; commercial jet combined):</b>	<b>598</b>
<b>Total Preferred Runway Unavailable Deviations (corporate &amp; commercial jet combined):</b>	<b>108</b>
<b>Total FAA Assigned Deviations (corporate &amp; commercial jet combined):</b>	<b>165</b>
<b>Total Noise Complaints (Month/Year):</b>	<b>172 / 2,200</b>

Key
* Includes: Scheduled runway closures, unscheduled runway closures, aircraft emergencies and wildlife strike inspections
** Does not include Runway 10-28
*** Flights operating at exactly 7a.m. and 10p.m. are included in both figures
**** Combined deviation percentages for both runways

## Runway Map



## Percentage of Jet Arrivals by Runway End (October 2023)



- Runway Closures: **1R/19L**
- **West Runway** Unavailable includes closures for maintenances and emergencies, among other factors.
- Total complaints based on complaints logged as of [October 31<sup>st</sup>, 2023].
- Commercial Jet Aircrafts are: Boeing, Airbus, McDonald Douglas, Douglas Corporation, Bombardier and Embraer commercial aircraft.
- Pilot Request Deviations include commercial jet aircraft departures on Runway 19L and jet aircraft arrivals on Runway 1R.
- This data compiled from the noise office software provided by Casper Airport Solutions and may differ from official FAA monthly traffic counts.