



Community Noise Forum Meeting

July 18, 2019



Safety

- **Restrooms:**
 - Outside the door you entered on the left.
- **Emergency Exit:**
 - Door through which you entered and turn right.
 - Follow overhead announcements and/or verbal guidance.
 - Proceed down to Level 1 (baggage claim) and proceed outside.



Safety

- **Nearest AED:**
 - Location: Guest Services Information Desk (center of the floor we are on).
 - Proceed out the door you entered towards the middle of the Main Terminal building.
 - Once out of the Boardroom hallway, make a left.
 - Proceed to the center of the floor you are on.
 - AED is located on the outside of the Guest Services Information Desk.



Agenda

- Open Comments (15 minutes)
- Noise Monitoring Office Update (40 minutes)
- Metroplex (5 minutes)

This public meeting is being audio recorded



Hillsborough County Aviation Authority
Tampa International, Peter O. Knight,
Plant City and Tampa Executive Airports

Open Comments



Hillsborough County Aviation Authority
Tampa International, Peter O. Knight,
Plant City and Tampa Executive Airports

Noise Monitoring Office Update

Top Complaints During the Period

May 1 through June 30, 2019

- West Runway Closure (June 10-18)
- East Runway Closure (June 19-29)
- Aircraft Routing Due to Thunderstorms

East and West Runway Closures

- West Runway Closure (June 10-18)
- East Runway Closure (June 19-29)
 - Both closures necessary to complete multiple runway maintenance efforts



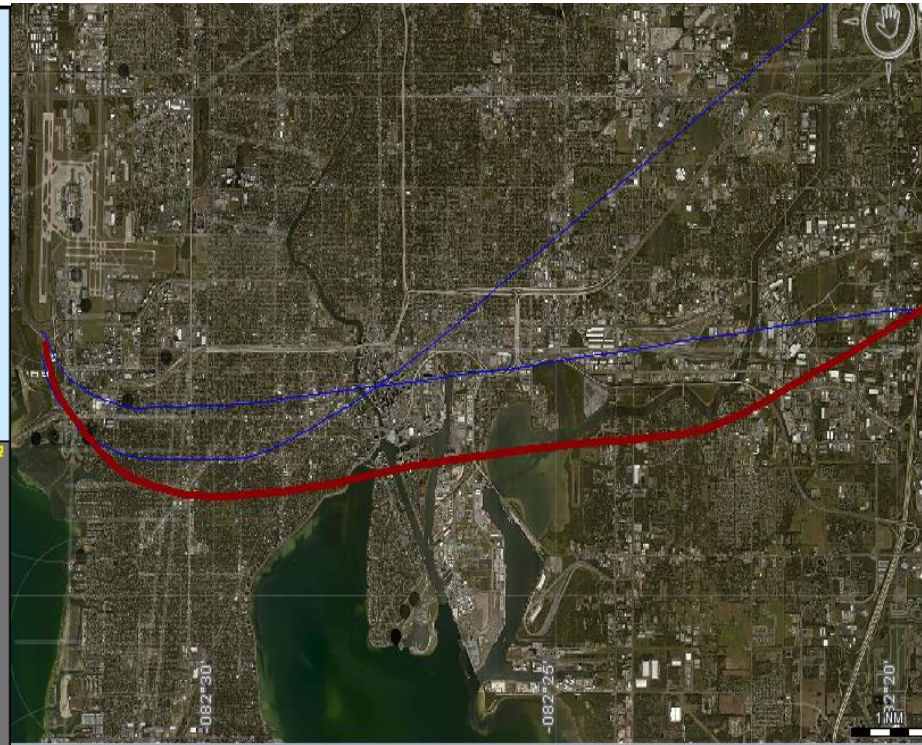
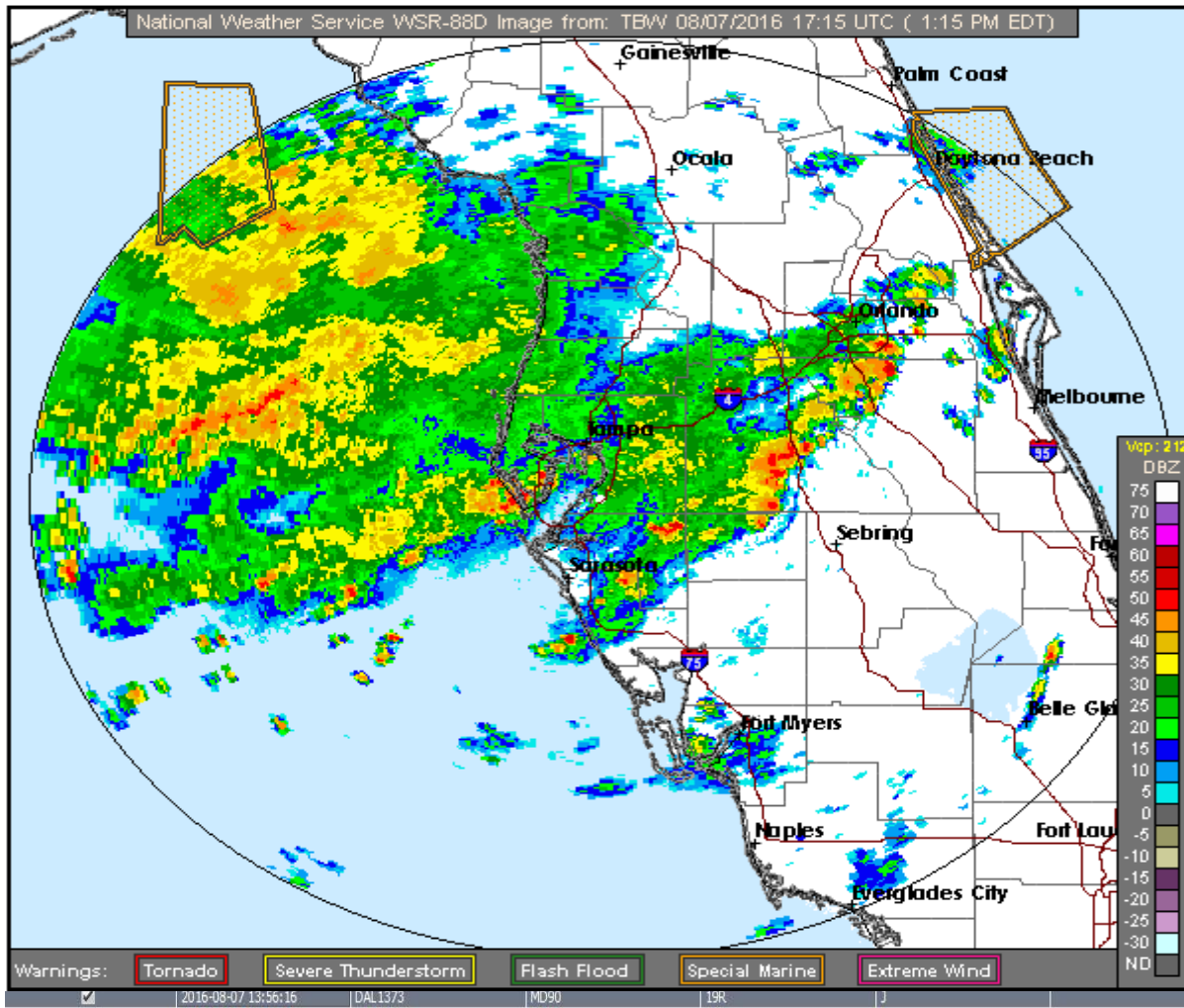
Thunderstorm Activity

- June 2019 (National Weather Service):
 - 19 days with thunderstorm activity
 - 9 days of heavy rain
 - 23rd wettest June on record for Tampa



Source: <https://w2.weather.gov/climate/getclimate.php?wfo=tbw>

Deviation Categories – Weather (cont'd)



Origin Airport	Destination Airport	Operation Type	Associated With Complaint	Associated Noise Events
2260 TPA	BWI	D	False	1
7776 TPA	DFW	D	False	1
7043 TPA	ATL	D	False	0



Hillsborough County Aviation Authority
Tampa International, Peter O. Knight,
Plant City and Tampa Executive Airports

Metroplex (NextGen)

Metroplex (NextGen) – Key Facts



- Congressional mandate to the Federal Aviation Administration (FAA) to transform the National Airspace System.
- Primary component is implementation of Performance Based Navigation (PBN), moving away from ground based navigation to satellite based navigation.
- South-Central Florida implementation (including TPA) not expected for at least 18-24 months.
- Majority of NextGen expected to be fully implemented by 2021.



More to Come on Metroplex...

- FAA is the agency implementing congressionally mandated modernization of the National Airspace System.
- The FAA held their first round of public meetings in our area between April 29 and May 2.
 - This is the first of two rounds of meetings
 - The FAA will now be conducting an environmental assessment on their procedural enhancements around our airspace
 - The FAA is expected to return for another round of public meetings in Spring/Summer 2020
- The FAA continues their evaluation of the Florida Metroplex project and more information will be made available as communicated by FAA.
- Hillsborough County Aviation Authority is committed to:
 - Community engagement on Metroplex.
 - Making sure residents and stakeholders are involved in the process to the greatest extent possible allowed by the FAA.
 - We welcome the opportunity to engage with your HOA to help encourage your community to participate in public FAA meetings, when they are scheduled.





Hillsborough County Aviation Authority
Tampa International, Peter O. Knight,
Plant City and Tampa Executive Airports

Monthly Scheduled Runway Closures

Reminder – Scheduled Monthly Runway Closures

1st Wednesday of every month – Runway 1L-19R Closed between 7:30 a.m. – 10:30 a.m.

3rd Wednesday of every month – Runway 1R-19L Closed between 7:30 a.m. – 10:30 a.m.

IMPORTANT: The Airport is currently assessing the frequency and duration of scheduled monthly runway closures. Adjustments to maximize runway maintenance and required activities is expected and will be communicated over the coming weeks.

Note: Runway closure dates, times and lengths are subject to change



Hillsborough County Aviation Authority
Tampa International, Peter O. Knight,
Plant City and Tampa Executive Airports

Next Community Noise Forum Meeting:

Thursday, September 12, 2019

Times: 9:30 a.m. until 10:30 a.m. and 5:30 p.m. until 6:30 p.m.



Community Noise Forum Meeting

July 18, 2019

