

Tampa International Airport

Monthly Noise Monitoring Office Report

June 2023



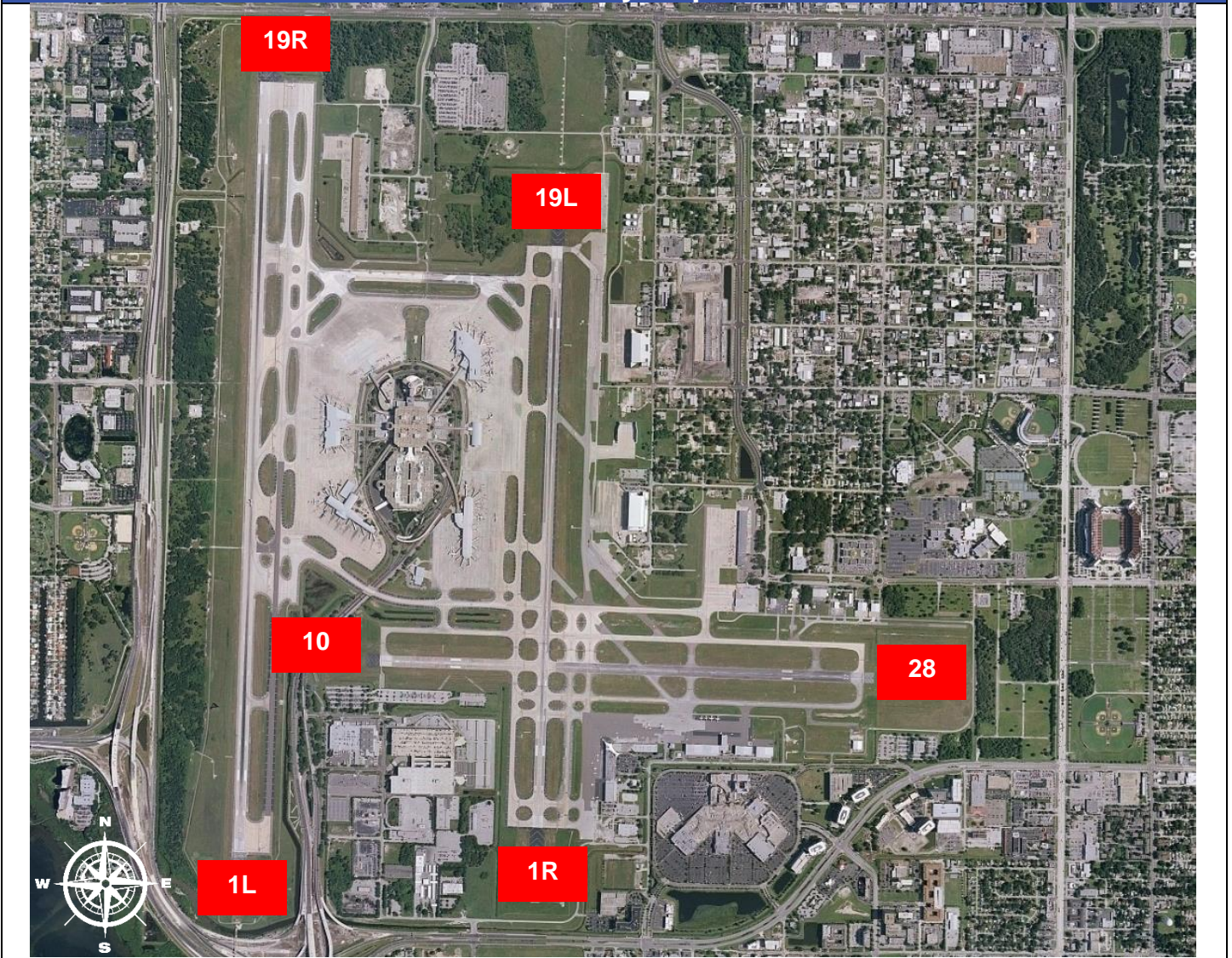
Monthly Noise Report	
Operational Impacts	Community Outreach
<ul style="list-style-type: none"> Runway 1R-19L was closed continuously for runway construction activity from May 30th to June 29th, 2023. 	<ul style="list-style-type: none"> A Noise 101 Meeting is schedule for July 12th, 2023 Two Community Noise Forum meetings are scheduled for July 20th, 2023.
For more information please visit: www.tampaairport.com/noise-abatement or call: (813) 870-7843	

Deviations		
North of Airport	West of Airport	South of Airport
1L / 1R Departures – Westbound Aircraft Turns Below 3,000 ft.	Runway 10-28 Arrivals / Departures	Runway 1R Jet Arrivals and Runway 19L Commercial Jet Departures
Jet Aircraft Turns Below 3,000 ft.: 1,195 Deviation Percentage of Total North Flow Departures: 43% Compliance: 57%	Total Runway 10 Jet Arrivals: 42 Deviation Percentage of Total Jet Operations: .3% Compliance: 99.7%	Total Runway 1R Jet Landings: 28 Total Runway 19L Commercial Jet Departures: 0 Combined Deviation Percentage of Total Jet Operations****: .2% Combined Compliance****: 99.8%

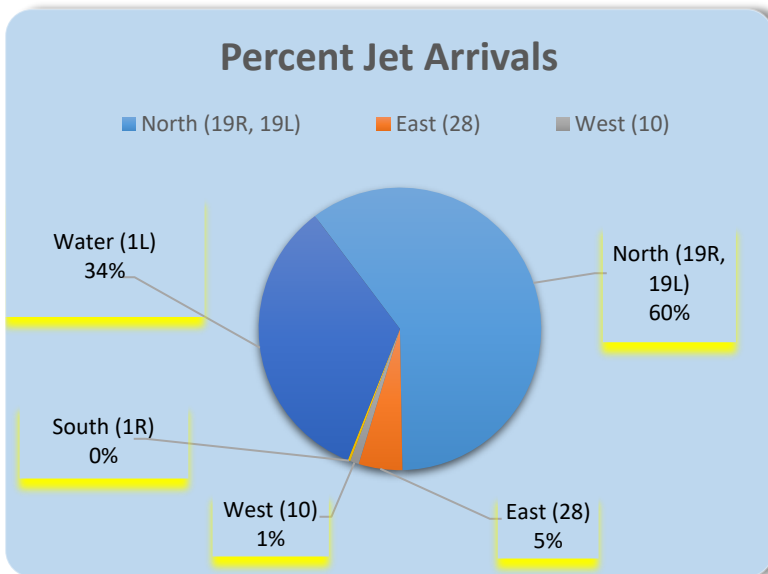
Operational Totals for June 2023	
Total Jet Operations (All Runways):	16,041
Total Prop/Turboprop Operations (All Runways):	1,354
Total North Flow Operations All Aircraft (Runway 1L & 1R):	5,600**
Total South Flow Operations All Aircraft (Runway 19R & 19L):	9,846**
All Aircraft Operations 7 a.m. -10 p.m.:	13,936***
All Aircraft Operations 10 p.m. – 7a.m.:	3,438***
Total Pilot Request Deviations (corporate & commercial jet combined):	568
Total Preferred Runway Unavailable Deviations (corporate & commercial jet combined):	34
Total FAA Assigned Deviations (corporate & commercial jet combined):	36
Total Noise Complaints (Month/Year):	96 / 1,421

Key
* Includes: Scheduled runway closures, unscheduled runway closures, aircraft emergencies and wildlife strike inspections
** Does not include Runway 10-28
*** Flights operating at exactly 7a.m. and 10p.m. are included in both figures
**** Combined deviation percentages for both runways

Runway Map



Percentage of Jet Arrivals by Runway End (June 2023)



- Runway Closures: **1R/19L**
- **West Runway** Unavailable includes closures for maintenances and emergencies, among other factors.
- Total complaints based on complaints logged as of [June 30th, 2023].
- Commercial Jet Aircrafts are: Boeing, Airbus, McDonald Douglas, Douglas Corporation, Bombardier and Embraer commercial aircraft.
- Pilot Request Deviations include commercial jet aircraft departures on Runway 19L and jet aircraft arrivals on Runway 1R.
- This data compiled from the noise office software provided by Casper Airport Solutions and may differ from official FAA monthly traffic counts.