

# Tampa International Airport

## Monthly Noise Monitoring Office Report

### July 2023



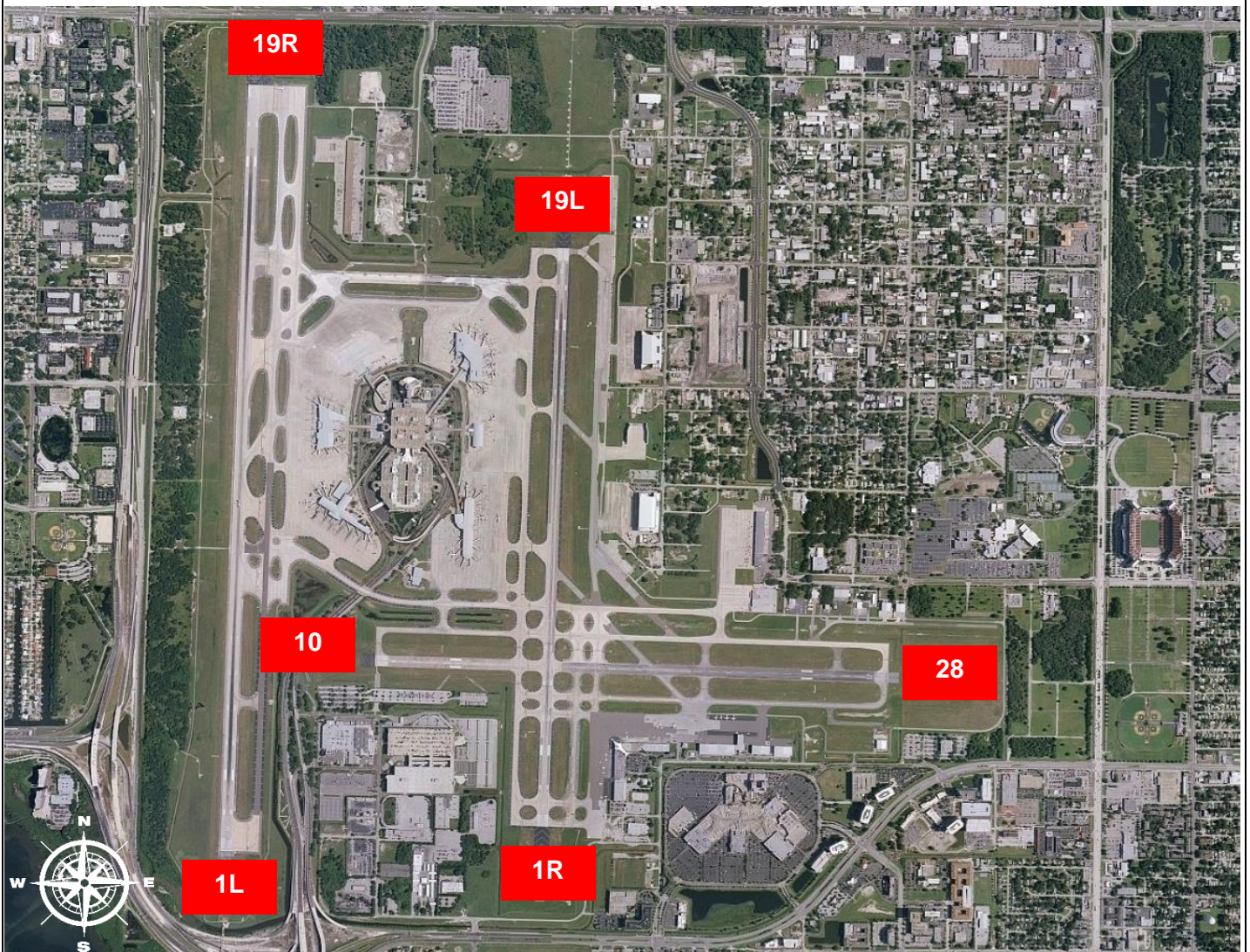
Monthly Noise Report	
Operational Impacts	Community Outreach
<ul style="list-style-type: none"> <li>Runway 1R-19L was closed on July 7<sup>th</sup>, 13<sup>th</sup> and 26<sup>th</sup>, 2023 for various maintenance activities.</li> <li>Runway 1L-19R was closed on July 5<sup>th</sup>, 9<sup>th</sup>, 12<sup>th</sup>, and 25<sup>th</sup>, 2023 for various maintenance activities.</li> <li>Runway 10/28 was closed on July 6<sup>th</sup>, 13<sup>th</sup>, and 27<sup>th</sup>, 2023 for various maintenance activities.</li> </ul>	<ul style="list-style-type: none"> <li>There were no RSVPs for the Noise 101 meeting scheduled for July 12<sup>th</sup>, 2023. Subsequently the meeting was cancelled.</li> <li>A Community Noise Forum meeting was held on scheduled for July 20<sup>th</sup>, 2023.</li> </ul>
For more information please visit: <a href="http://www.tampaairport.com/noise-abatement">www.tampaairport.com/noise-abatement</a> or call: (813) 870-7843	

Deviations		
North of Airport	West of Airport	South of Airport
1L / 1R Departures – Westbound Aircraft Turns Below 3,000 ft.	Runway 10-28 Arrivals / Departures	Runway 1R Jet Arrivals and Runway 19L Commercial Jet Departures
Jet Aircraft Turns Below 3,000 ft.: <b>407</b>	Total Runway 10 Jet Arrivals: <b>20</b>	Total Runway 1R Jet Landings: <b>362</b>
Deviation Percentage of Total North Flow Departures: <b>13%</b>	Deviation Percentage of Total Jet Operations: <b>.1%</b>	Total Runway 19L Commercial Jet Departures: <b>240</b>
Compliance: <b>87%</b>	Compliance: <b>99.9%</b>	Combined Deviation Percentage of Total Jet Operations****: <b>3.7%</b>
		Combined Compliance****: <b>96.3%</b>

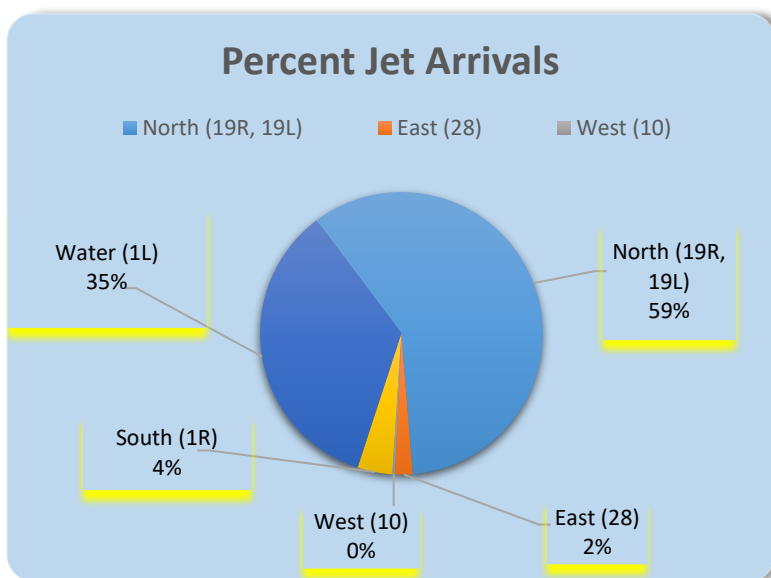
Operational Totals for July 2023	
Total Jet Operations (All Runways):	16,244
Total Prop/Turboprop Operations (All Runways):	1,327
Total North Flow Operations All Aircraft (Runway 1L & 1R):	6,593**
Total South Flow Operations All Aircraft (Runway 19R & 19L):	10,195**
All Aircraft Operations 7 a.m. -10 p.m.:	14,124***
All Aircraft Operations 10 p.m. – 7a.m.:	3,425***
Total Pilot Request Deviations (corporate & commercial jet combined):	335
Total Preferred Runway Unavailable Deviations (corporate & commercial jet combined):	333
Total FAA Assigned Deviations (corporate & commercial jet combined):	121
Total Noise Complaints (Month/Year):	231 / 1,652

Key
* Includes: Scheduled runway closures, unscheduled runway closures, aircraft emergencies and wildlife strike inspections
** Does not include Runway 10-28
*** Flights operating at exactly 7a.m. and 10p.m. are included in both figures
**** Combined deviation percentages for both runways

## Runway Map



## Percentage of Jet Arrivals by Runway End (July 2023)



- Runway Closures: **1R/19L**
- **West Runway** Unavailable includes closures for maintenances and emergencies, among other factors.
- Total complaints based on complaints logged as of [July 31<sup>st</sup>, 2023].
- Commercial Jet Aircrafts are: Boeing, Airbus, McDonald Douglas, Douglas Corporation, Bombardier and Embraer commercial aircraft.
- Pilot Request Deviations include commercial jet aircraft departures on Runway 19L and jet aircraft arrivals on Runway 1R.
- This data compiled from the noise office software provided by Casper Airport Solutions and may differ from official FAA monthly traffic counts.