

First Quarter 2015

Community Noise Consortium Meeting

Thursday, April 30, 2015



Agenda

- Introductions
- Update on Construction Projects
 - Jeff Siddle, Assistant VP Planning and Development
- Q1 2015 Review
- Questions and Answers

This Public Meeting is being audio recorded

Building **Partnerships.** Building the **Future.**



Master Plan Update Community Noise Consortium

April 30, 2015









Agenda

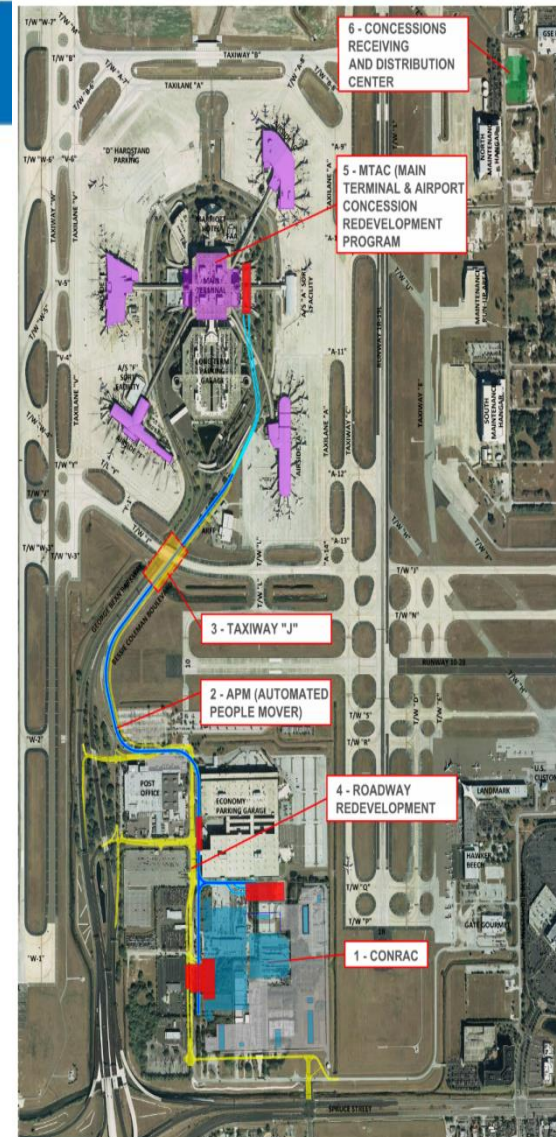
- Introduction
- Program Overview
 - ConRAC
 - APM
 - Taxiway J
 - Roadway Improvements
 - MTAC



Program Overview

-  1 - Consolidated Rental Car Facility
-  2 - Automated People Mover
-  3 - Taxiway "J" Bridge
-  4 - Roadway Improvements
-  5 - Main Terminal Expansion and Concessions Redevelopment
-  6 - Concessions Receiving and Distribution Center

Total: \$943M





ConRAC

Program Budget: \$318,700,000

Design Builder: Austin

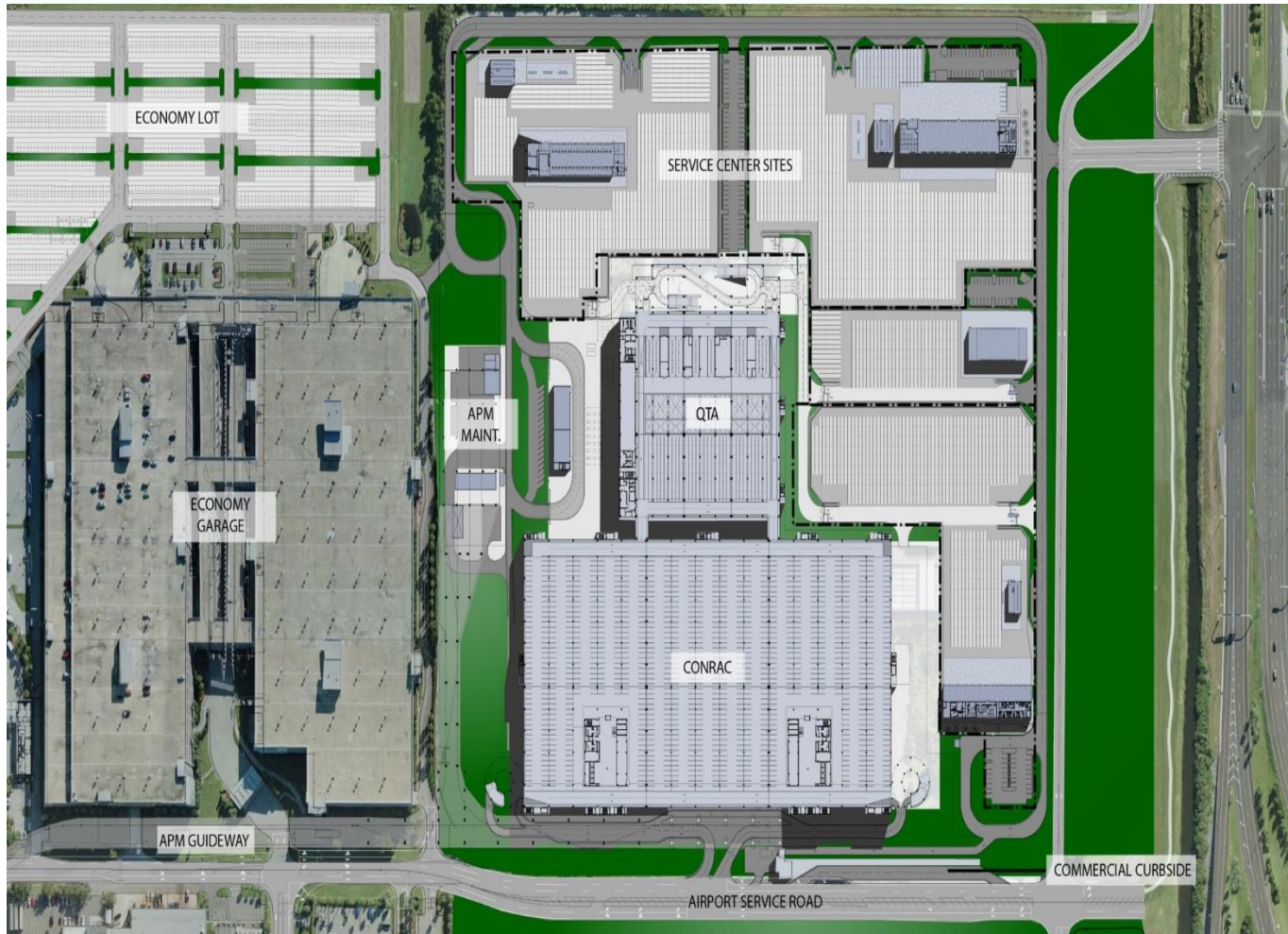
Commercial/Gresham Smith/Demattei
Wong

- 60 Acre Site
- 2.6 million SF, 3 levels
- 180,000 SF Customer service building
- 4 rental car service center buildings
- Construction is underway
- Complete October 1, 2017





ConRAC



Site Plan



ConRAC



Exterior East View



ConRAC



Customer Service Lobby



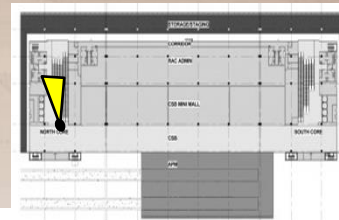
ConRAC



Customer Service Lobby - North Circulation Core



ConRAC



Customer Service Lobby - North Circulation Core



ConRAC – Progress Photo



ConRAC Site



APM

Program Budget: \$417,500,000

Design Builder: Austin Commercial/Gresham Smith/Lea Elliott/Mitsubishi

- 1.4 Mile Automated People Mover:
 - 12 vehicles with train Controls and power distribution system
- Three Stations:
 - Main Terminal, Economy Garage and ConRAC
- Construction begins July 2015
- Complete October 1, 2017





APM



Main Terminal APM Station/Terrace – North View



APM



Main Terminal APM Station – Northwest View



APM



Main Terminal APM Station – View from Terrace



APM



Main Terminal APM Station – Interior View



TAXIWAY "J"

- Budget: \$30,692,500
- Design Builder: Cone and Graham/URS
- New Overpass Taxiway
- 5 phases required
- Construction is underway
- Complete September 2, 2016





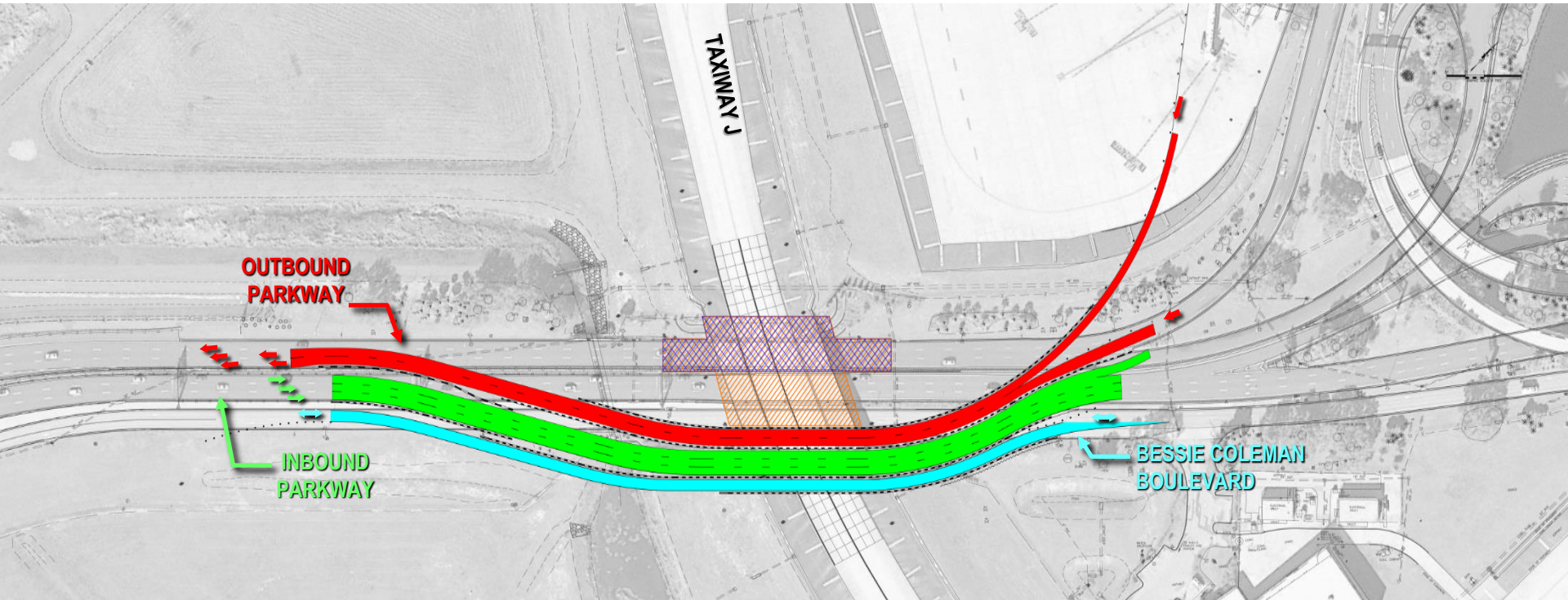
TAXIWAY "J"





Taxiway J

July 11, 2015 through Feb 10, 2016



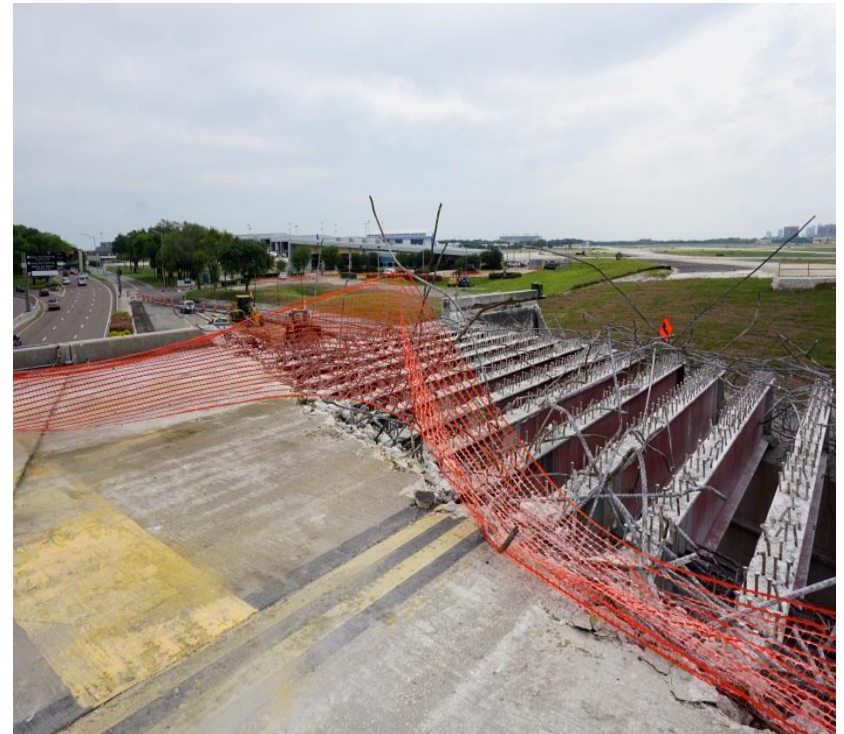
- Shift Outbound George Bean Parkway Traffic; Reduce to 2-lanes
- Demolish Remaining Spans of Taxiway J Bridge
- Build New Spans for George Bean Parkway



Taxiway J – Progress Photos



Service Road Removal



Taxiway J Bridge Removal



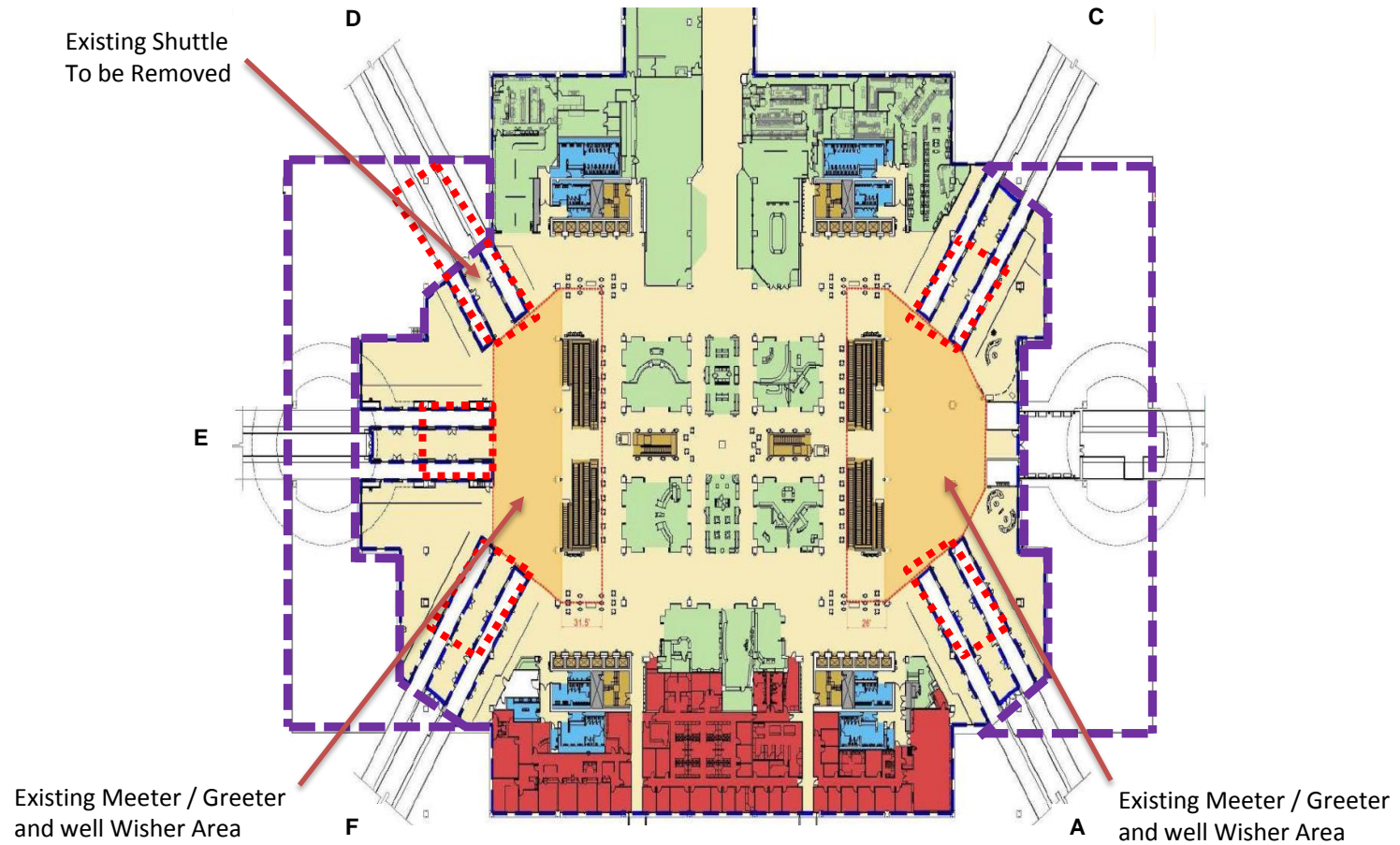
Roadway Improvements

- Budget: \$21,409,200
- Design Builder: Kimmins Construction/Atkins
- Improvements to all roadways
- Will accommodate all future roadway traffic:
 - ConRAC
 - Economy Garage
 - Commercial real estate development
 - Post Office
 - Cell phone lot
- Construction begins September 2015
- Complete October 1, 2017





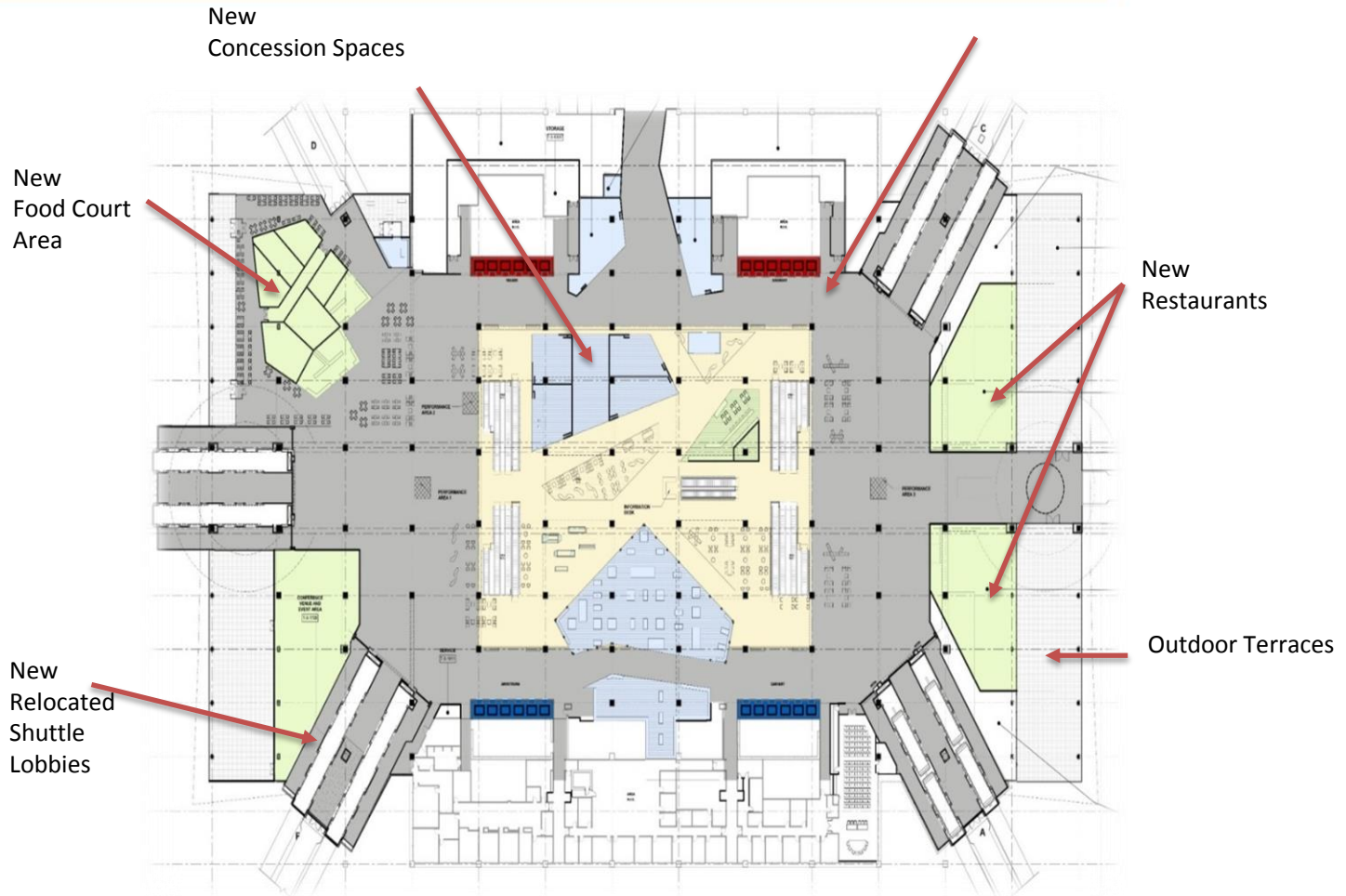
MTAC



Existing Transfer Level



MTAC



Proposed Transfer Level Improvements



MTAC



Main Terminal – East Side



MTAC



Main Terminal – West Side



MTAC – Progress Photos



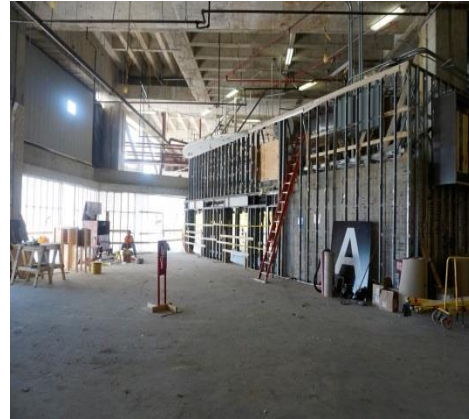
Transfer Level – East Side
Construction Walls



MTAC – Progress Photos



East Transfer Level Expansion



Interior Demolition





Questions



Taxiway Juliet Bridge Construction Project

Future

Current



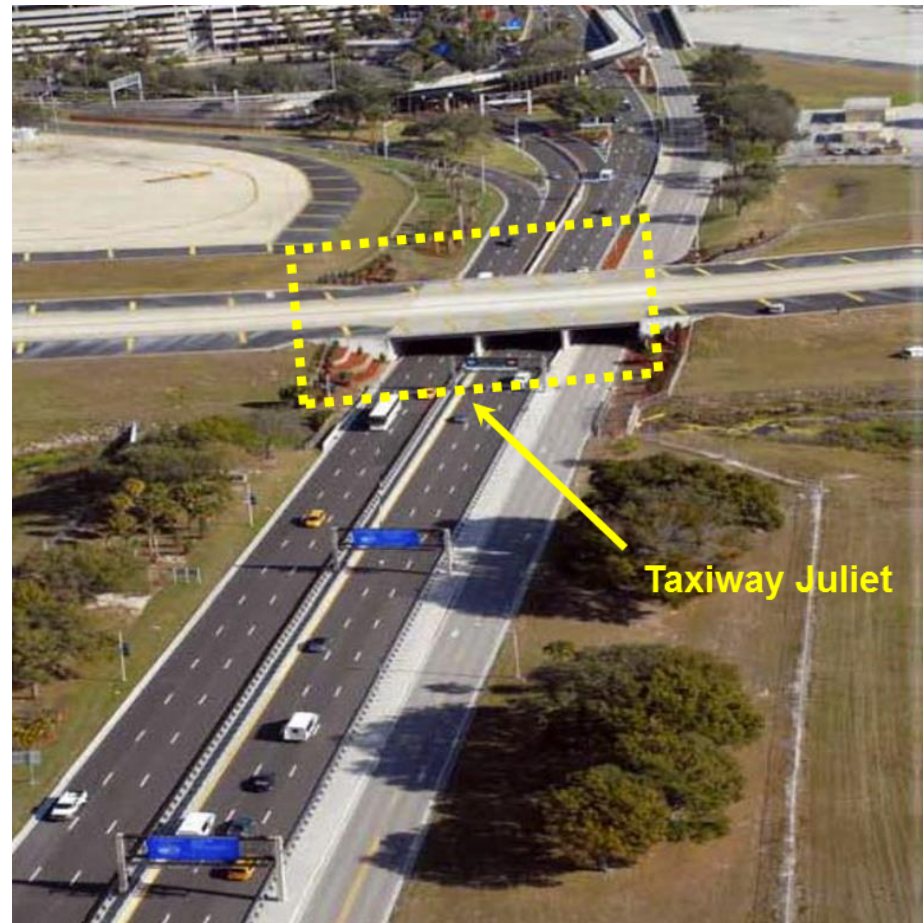
Taxiway Juliet Bridge Construction Project

This is the south cross-field taxiway for aircraft to transition between the west and east side of the airfield.

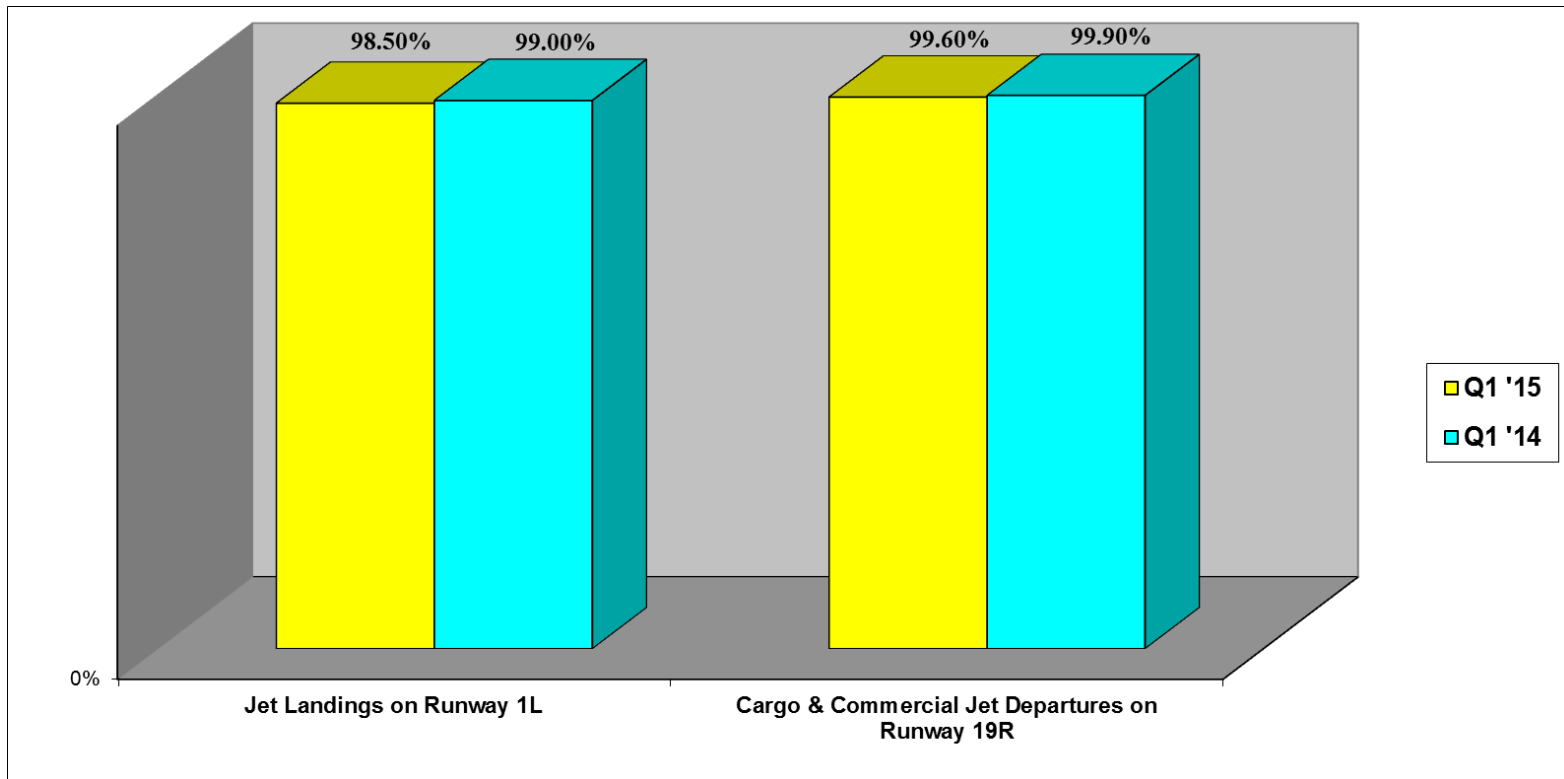
These operational changes improve **safety** and started on Feb. 11, 2015.

Operational changes for 19 months:

- **Airside A commercial jet operators between 10:00 am and 6:00 pm may be assigned by FAA to land on Runway 1R.**
- **All corporate jets will be assigned Runway 1R to land.**



Compliance Rate of Voluntary Noise Program



Passenger Counts

Passenger Counts as reported by the Airlines

Month	Yr. 2014	Yr. 2015	% Change
January	1,364,577	1,480,828	8.52%
February	1,353,030	1,465,499	8.31%
March	1,817,323	1,919,905	5.64%
TOTAL	4,534,930	4,866,232	7.31%

Aircraft Operations

Aircraft Operations as reported by TPA FAA ATCT

Month	Yr. 2014	Yr. 2015	% Change
January	15,439	16,388	6.15%
February	14,590	15,062	3.24%
March	18,149	18,568	2.31%
TOTAL	48,178	50,018	3.82%

Airfield Flow Patterns

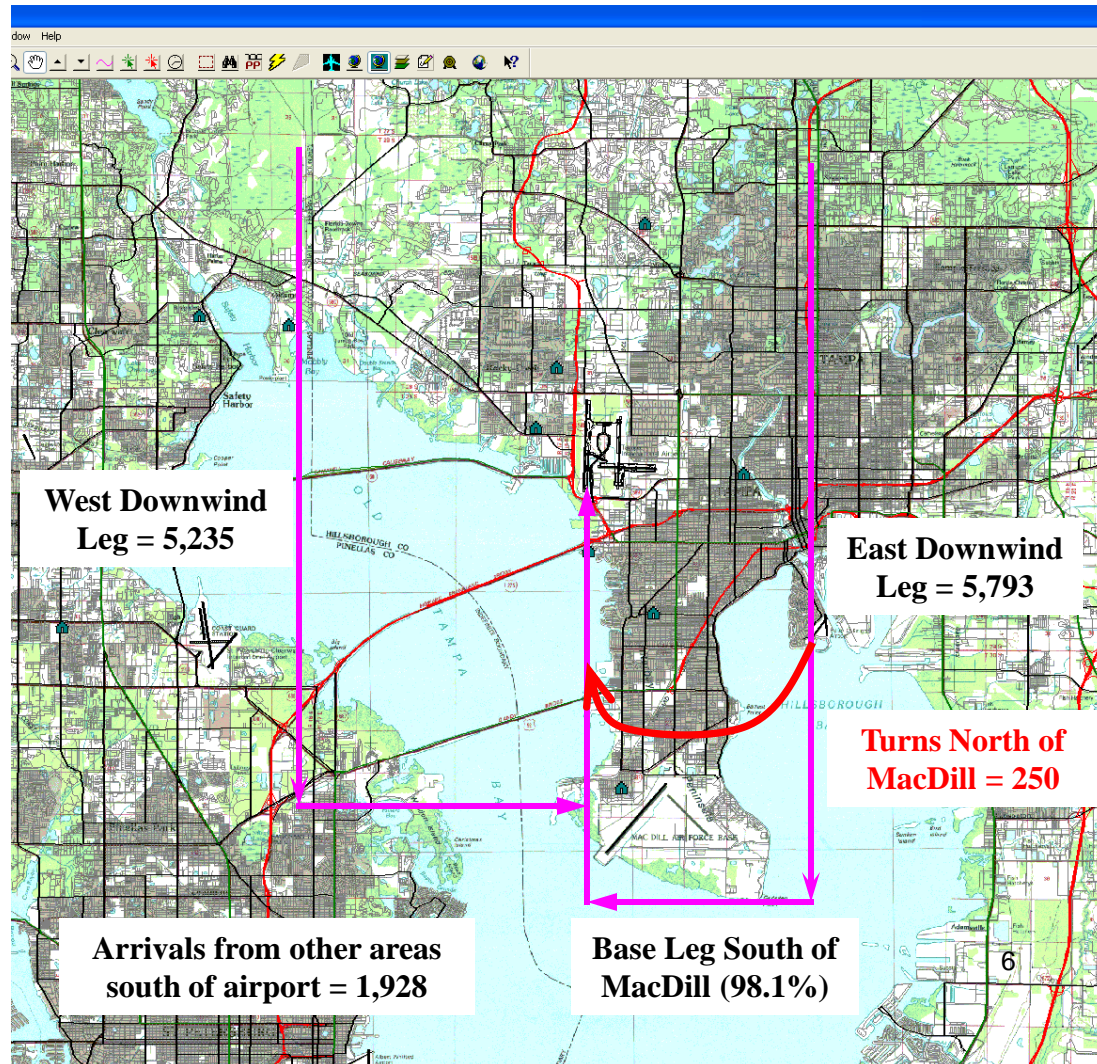
North Flow vs. South Flow								
	Year 2015		Year 2014		Year 2013		Year 2012	
Months	North Flow	South Flow	North Flow	South Flow	North Flow	South Flow	North Flow	South Flow
January	71%	29%	65%	35%	52%	48%	50%	50%
February	64%	36%	49%	51%	48%	52%	48%	52%
March	50%	50%	50%	50%	60%	40%	48%	52%
April			40%	60%	40%	60%	55%	45%
May			48%	52%	52%	48%	40%	60%
June			44%	56%	16%	84%	36%	64%
July			30%	70%	29%	71%	29%	71%
August			50%	50%	37%	63%	26%	74%
September			44%	56%	52%	48%	57%	43%
October			62%	38%	66%	34%	75%	25%
November			79%	21%	86%	14%	84%	16%
December			70%	30%	52%	48%	72%	28%

Q1 '15 Jet Turns North of MacDill A.F.B.

- Commercial & Cargo = 155
- Corporate = 95
- Jet turns north of MacDill's Runway 4 represented approximately 1.9% of the total arrivals (12,983) during a north flow this quarter.

**Jet Turns North of MacDill
Quarterly History**

Year	Q1	Q2	Q3	Q4
2015	1.9%			
2014	1.6%	1.6%	2.5%	1.7%
2013	1.9%	2.4%	3.0%	2.8%
2012	0.6%	0.7%	1.2%	2.1%
2011	1.4%	1.0%	1.3%	0.7%
2010	0.9%	1.0%	1.5%	1.0%



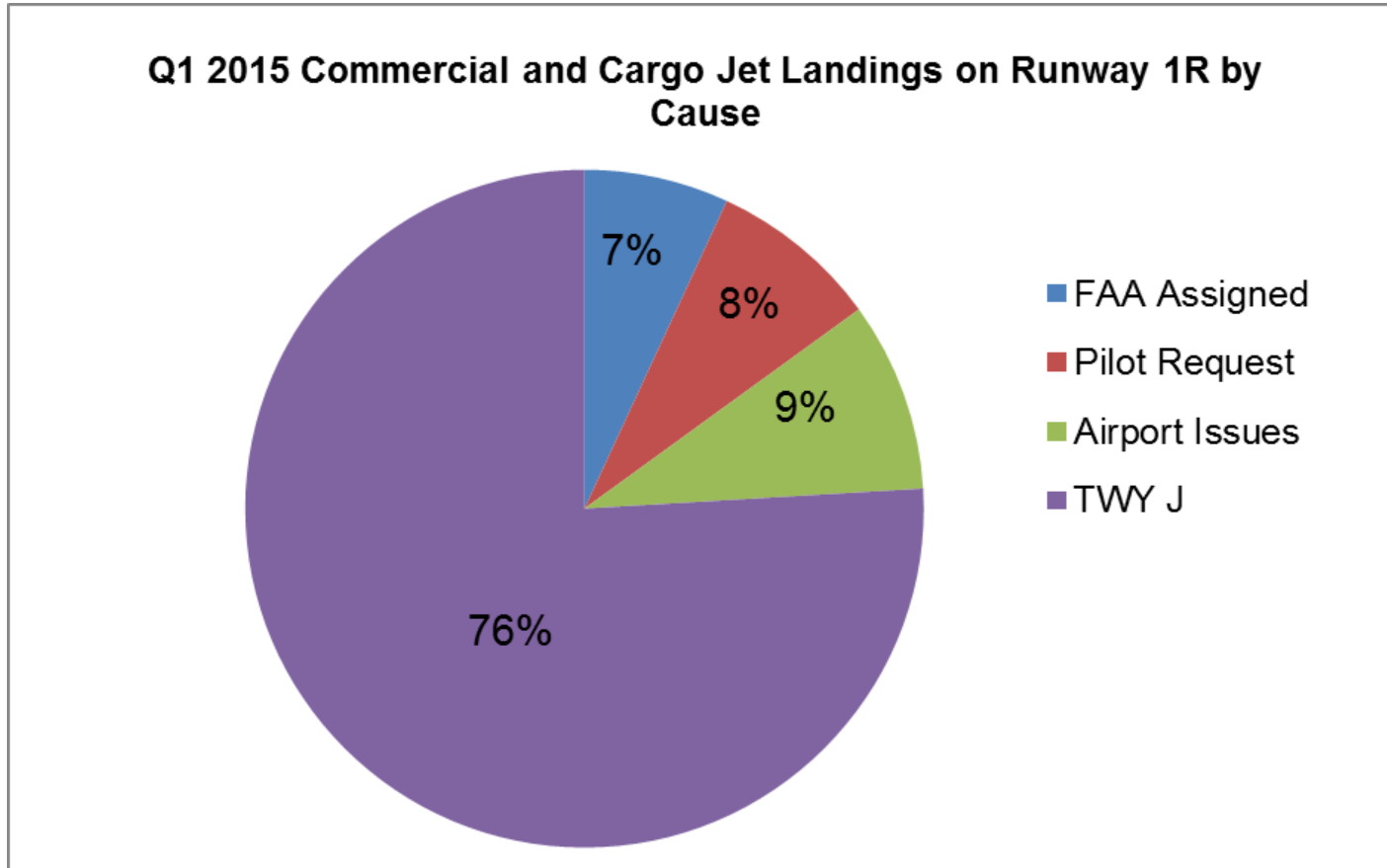
Q1 '15 Jet Arrivals on Runways 1R & 1L

Combined Jet Arrivals on Runways 1R & 1L January - March 31, 2015	12,983	
	1L	1R
Percentage of Arrivals	86.7%	13.2%
Percentage Breakdown of Landings on 1R:		
Airport Issues: Maintenance/Construction/Emergency/Wildlife/FOD (1,283)	-	9.9%
FAA Assigned:	-	2.1%
Commercial & Cargo = 0.4% (51)		
Corporate = 1.7% (219)		
Pilot Request:	-	1.1%
Commercial = 0.46% (60)		
Corporate = 0.61% (80)		
Exempt - Lifeguard (15); Law enforcement (0)	-	0.12%
Number of Landings	11,253	1,708

Comparison to CY Q1 '14

- ➔ Jet landings on Runways 1R & 1L combined increased by 2,250 from 10,733.
- ➔ Commercial and Cargo jet pilots requested landings on Runway 1R increased by 32 from 19. Corporate jet pilots requested landings decreased by 12.
- ➔ FAA assigned landings increased by 247 from 23.
- ➔ Overall, jet landings on Runway 1R increased by 851 due to the Taxiway Juliet Bridge construction project which began on February 11, 2015.

Q1 '15 Jet Landings on Runway 1R



Jet Landings on Runway 1R

Quarterly Calendar Year Percentages of Jet Landings on Runway 1R

Year	Q1	Q2	Q3	Q4
2015	†13.2%			
2014	****8.0%	4.6%	2.5%	4.1%
2013	3.1%	4.1%	***13.8%	***23.4%
2012	3.2%	4.3%	3.3%	**6.0%
2011	*19.13%	3.2%	3.3%	2.9%
2010	2.3%	1.3%	2.6%	1.7%

*Runway 1L-19R was closed for eleven (11) days for Runway Designation Project.

**Runway 1L-19R was closed to landings for several days due to the Airfield Drainage Project.

***Runway 1L-19R was closed on Sept. 23, 2013 for Construction and reopened on Oct. 22, 2013.

****Runway 1L-19R was closed daily from 7 am to 7 pm from March 3, to March 14, 2014.

†Taxiway J Bridge Construction Project: Change to voluntary preferential runway use program for certain jet operators to land on Runway 1R that started on Feb. 11, 2015.

Q1 '15 Jet Departures on Runway 19L

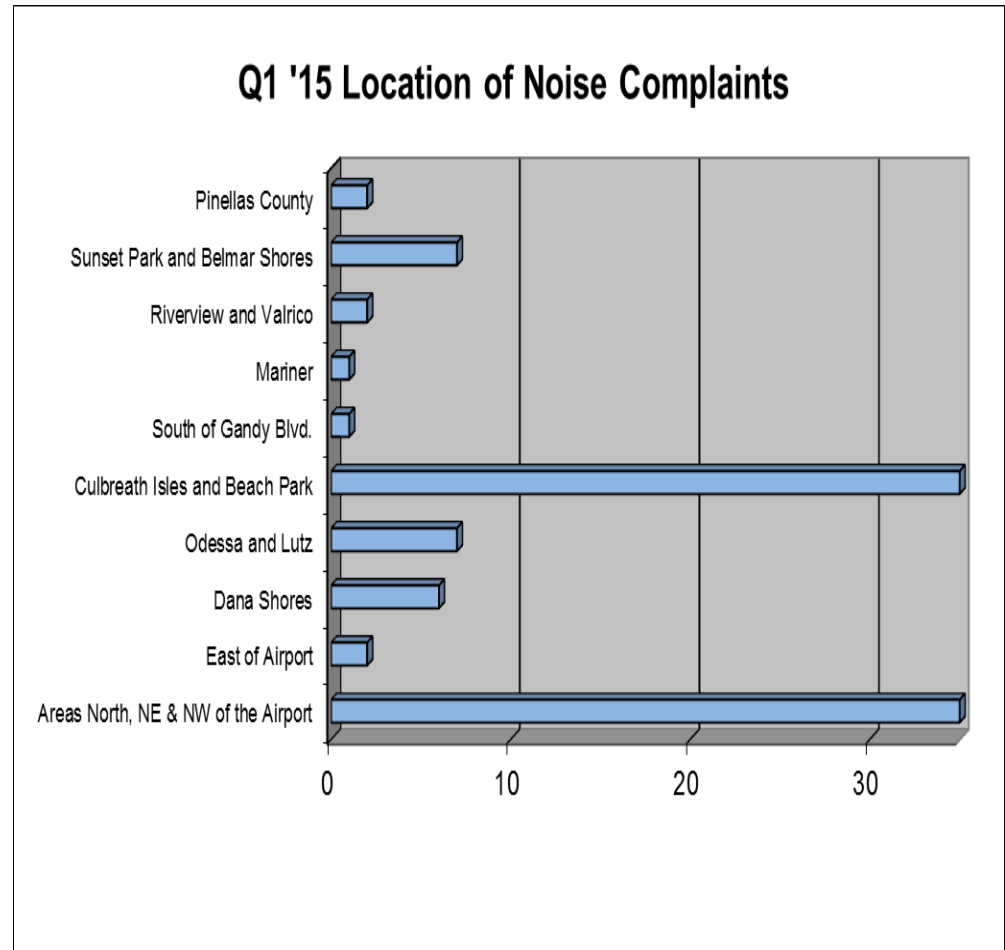
Combined Jet Departures on Runways 19L & 19R	8,196	
January - March 31, 2015	19R	19L
Percentage of Departures	87.4%	12.6%
Commercial & Cargo Percentage Breakdown of Departures on 19L:		
Airport Issues: Maintenance/Weather/Emergency/Wildlife/FOD (169)		2.06%
FAA Assigned - traffic (32)		0.39%
Pilot Request (31)		0.38%
Corporate (799)		9.7%
Number of Departures	7,165	1,031

Comparison to CY Q1 '14:

- FAA assigned departures increased by **5**.
- Pilot requested departures decreased by **24**.
- Airport Issues assigned departures decreased by **651** or from 817 to 166.

Q1 '15 Noise Complaints

- **Total of 126 noise complaints from 35 individual households.**
 - 62 more complaints compared to the same quarter a year ago (64).
 - 57 more complaints compared to the same quarter in 2013 (69).
- **Twelve repeat callers accounted for 103 or 82% of the total complaints.**
- **Frequent types of noise complaints:**
 - 67% - Loud
 - 29% - Jet Landings on Runway 1R
- **Geographical location of majority of noise complaints:**
 - ➔ Areas north of Airport – 46
 - ➔ Beach Park & Culbreath Isles – 52
 - ➔ Dana Shores - 6
 - ➔ Belmar Shores & Sunset Park – 7
 - ➔ Odessa and Lutz – 7



Reminder - Scheduled Runway Closures for FAA

**1st Wednesday of every month – Runway 1L-19R
Closed between 6:30 a.m. – 8:30 a.m.**

**3rd Wednesday of every month – Runway 1R-19L
Closed between 6:30 a.m. – 8:30 a.m.**

Questions & Answer Forum

Next Meeting

Thursday, July 23, 2015 at 5:30 p.m.

Aviation Authority Board Room

