

Tampa International Airport

Monthly Noise Monitoring Office Report

December 2023



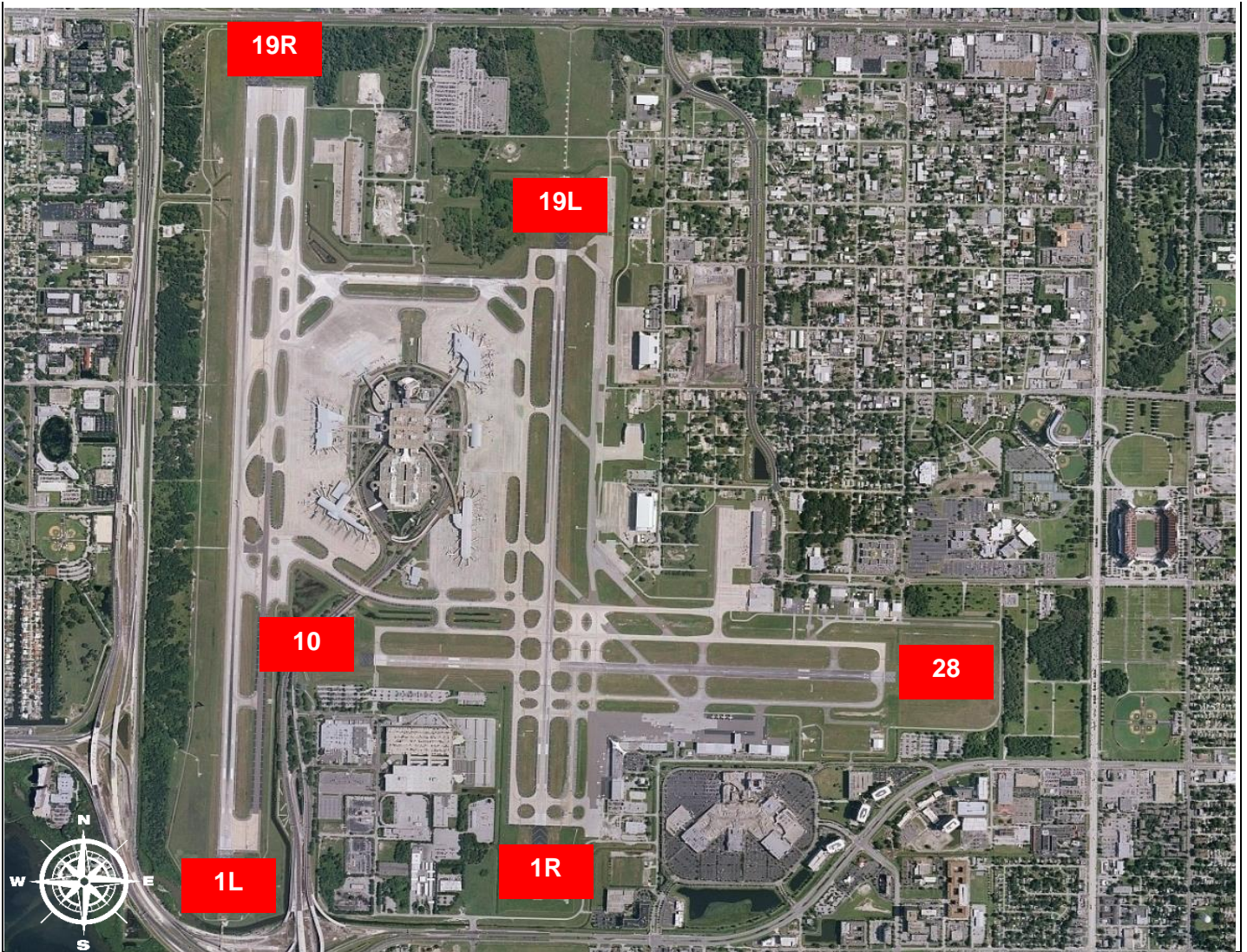
Monthly Noise Report	
Operational Impacts	Community Outreach
<ul style="list-style-type: none"> Scheduled runway closures were kept to a minimum due to the increased traffic over the holiday period. 	<ul style="list-style-type: none"> Two Community Noise Forum meetings will be held on January 18, 2024.
For more information please visit: www.tampaairport.com/noise-abatement or call: (813) 870-7843	

Deviations		
North of Airport	West of Airport	South of Airport
<i>1L / 1R Departures – Westbound Aircraft Turns Below 3,000 ft.</i>	<i>Runway 10-28 Arrivals / Departures</i>	<i>Runway 1R Jet Arrivals and Runway 19L Commercial Jet Departures</i>
Jet Aircraft Turns Below 3,000 ft.: 1,124 Deviation Percentage of Total North Flow Departures: 17% Compliance: 83%	Total Runway 10 Jet Arrivals: 7 Total Runway 28 Jet Departures: 6 Deviation Percentage of Total Jet Operations: .1% Compliance: 99.9%	Total Runway 1R Jet Landings: 760 Total Runway 19L Commercial Jet Departures: 106 Combined Deviation Percentage of Total Jet Operations****: 5% Combined Compliance****: 95%

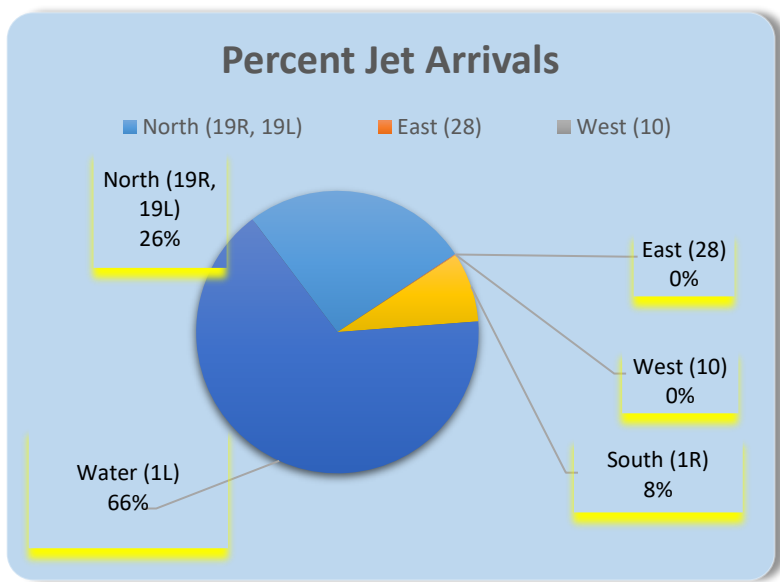
Operational Totals for December 2023	
Total Jet Operations (All Runways):	17,980
Total Prop/Turboprop Operations (All Runways):	1,062
Total North Flow Operations All Aircraft (Runway 1L & 1R):	14,236**
Total South Flow Operations All Aircraft (Runway 19R & 19L):	4,806**
All Aircraft Operations 7 a.m. -10 p.m.:	16,079***
All Aircraft Operations 10 p.m. – 7a.m.:	2,792***
Total Pilot Request Deviations (corporate & commercial jet combined):	609
Total Preferred Runway Unavailable Deviations (corporate & commercial jet combined):	90
Total FAA Assigned Deviations (corporate & commercial jet combined):	208
Total Noise Complaints (Month/Year): Note: Complaints for December 2023 do not include complaints that were text to the Airport through our texting system, due to an access issue to the system. We anticipate reporting these figures on the January 2024 monthly noise office report	201 / 2,827

Key
* Includes: Scheduled runway closures, unscheduled runway closures, aircraft emergencies and wildlife strike inspections
** Does not include Runway 10-28
*** Flights operating at exactly 7a.m. and 10p.m. are included in both figures
**** Combined deviation percentages for both runways

Runway Map



Percentage of Jet Arrivals by Runway End (December 2023)



- Runway Closures: **1R/19L**
- **West Runway** Unavailable includes closures for maintenances and emergencies, among other factors.
- Total complaints based on complaints logged as of [November 30th, 2023].
- Commercial Jet Aircrafts are: Boeing, Airbus, McDonald Douglas, Douglas Corporation, Bombardier and Embraer commercial aircraft.
- Pilot Request Deviations include commercial jet aircraft departures on Runway 19L and jet aircraft arrivals on Runway 1R.
- This data compiled from the noise office software provided by Casper Airport Solutions and may differ from official FAA monthly traffic counts.