



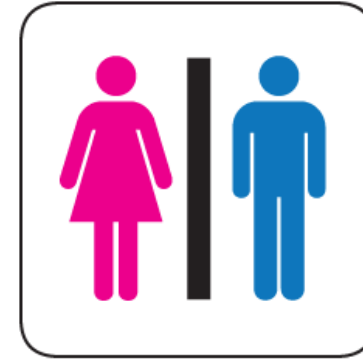
# Community Noise Forum Meeting

September 15, 2022



# Safety

- **Restrooms:**
  - Outside the door you entered on the left.
- **Emergency Exit:**
  - Door through which you entered and turn right.
  - Follow overhead announcements and/or verbal guidance.
  - Proceed down to Level 1 (baggage claim) and proceed outside.



# Safety

- **Nearest AED:**
  - Location: Guest Services Information Desk (center of the floor we are on).
  - Proceed out the door you entered towards the middle of the Main Terminal building.
  - Once out of the Boardroom hallway, make a left.
  - Proceed to the center of the floor you are on.
  - AED is located on the outside of the Guest Services Information Desk.



# Agenda

- Open Comments (20 minutes)
- Noise Monitoring Office Update (35 minutes)
- Upcoming Parallel Runway Closures (5 Minutes)

**This public meeting is being audio recorded**



**Hillsborough County Aviation Authority**  
Tampa International, Peter O. Knight,  
Plant City and Tampa Executive Airports

---

# Open Comments



**Hillsborough County Aviation Authority**  
Tampa International, Peter O. Knight,  
Plant City and Tampa Executive Airports

---

# Noise Monitoring Office Update



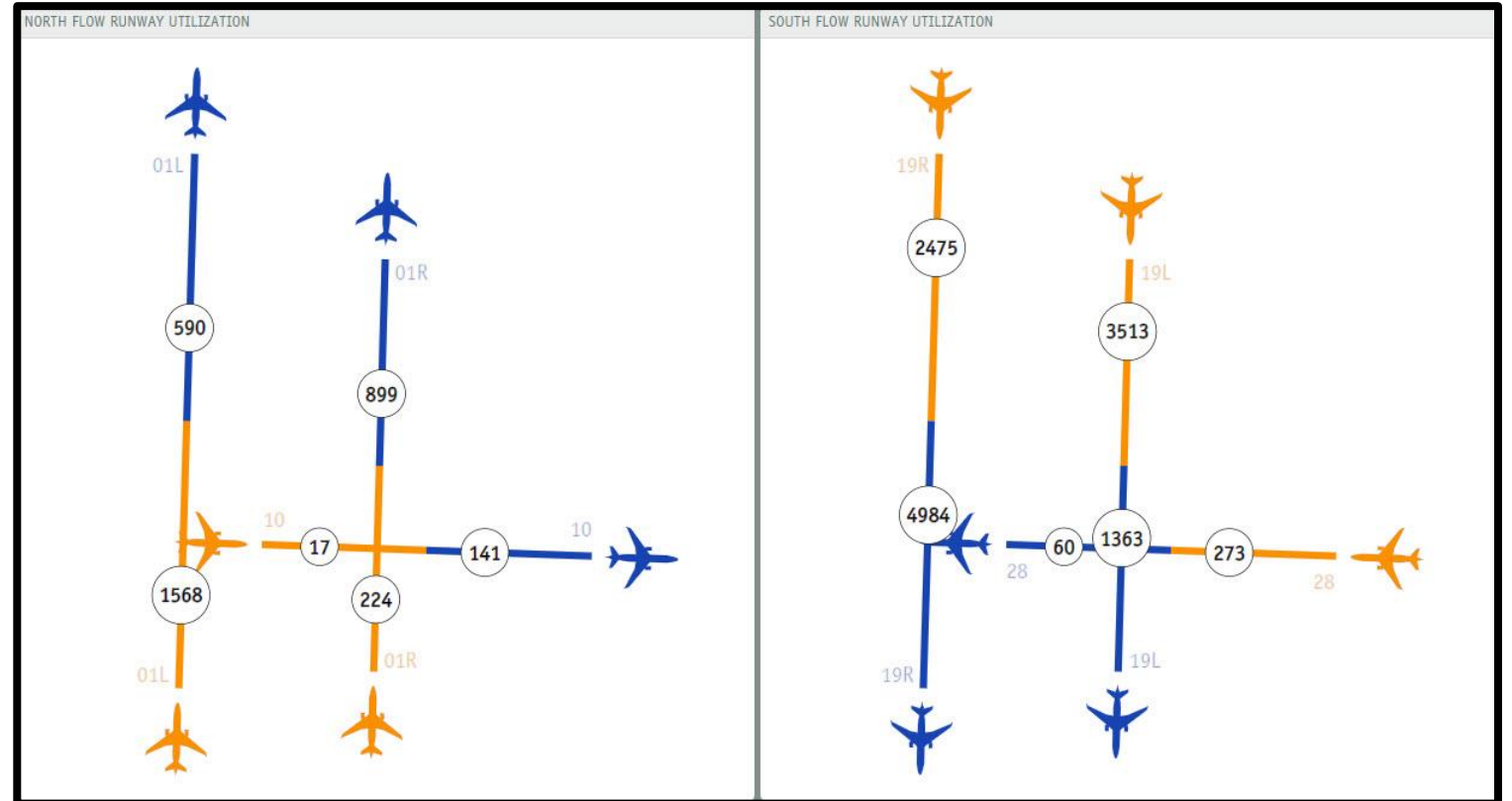
# News Helicopters

- Traffic Reporting
- Aircraft Separation
  - Altitude restrictions
  - Position restrictions



# Airport Flow

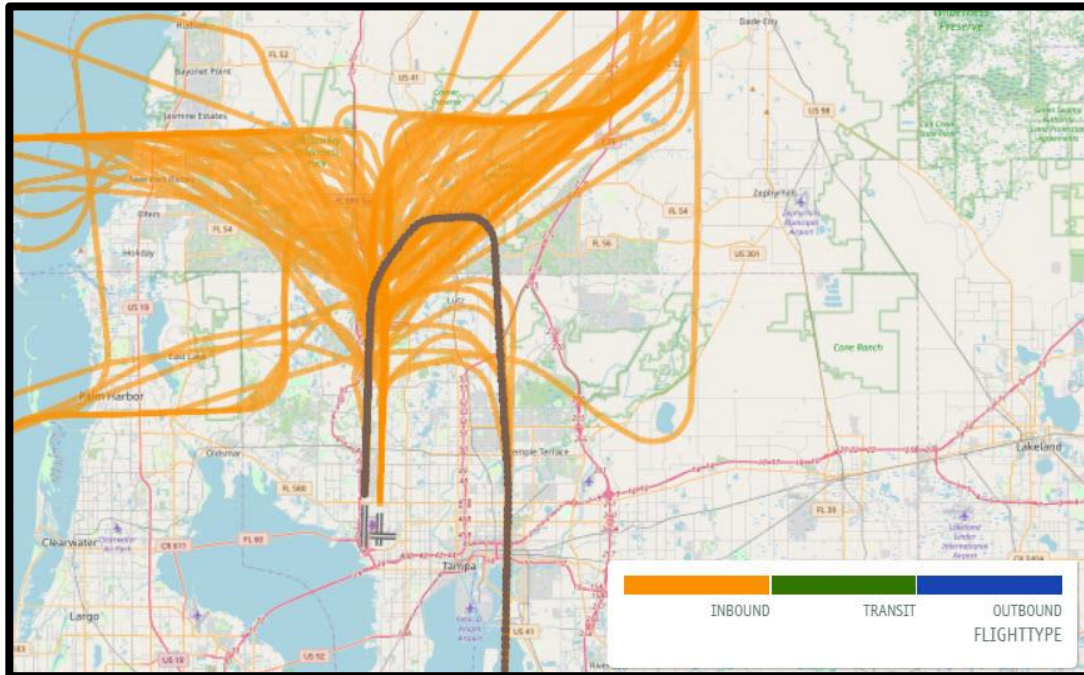
- Airport Flow Data:
  - June 55% South Flow
  - July 79% South Flow
  - Aug 74% South Flow



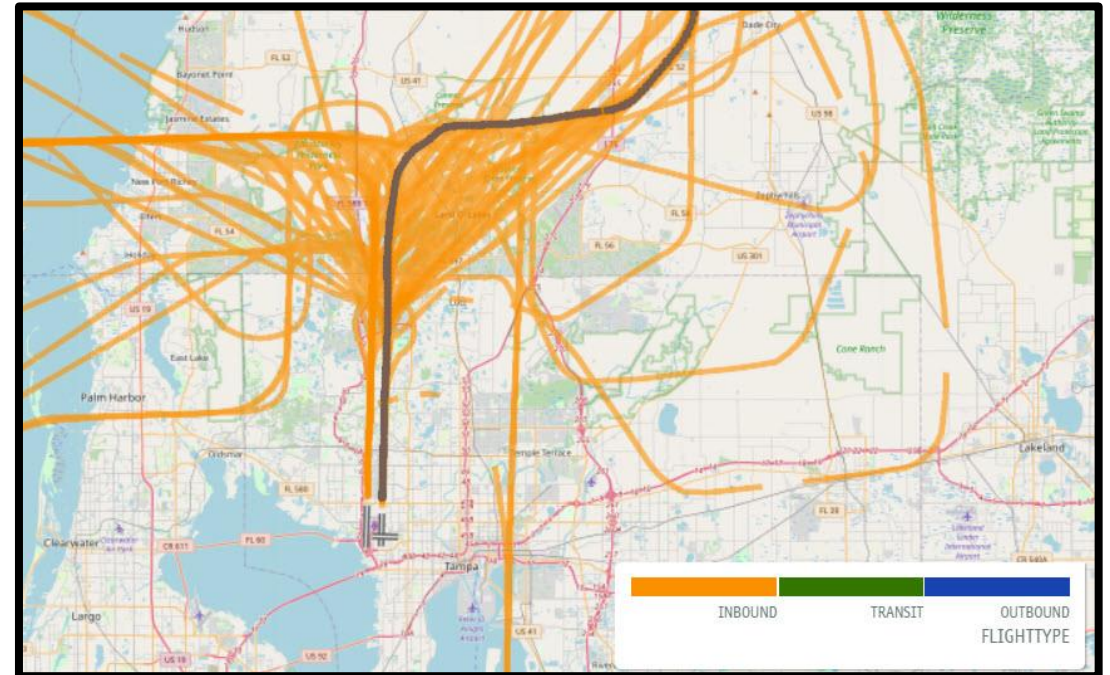
July Data Shown



# Airport Pattern South Flow

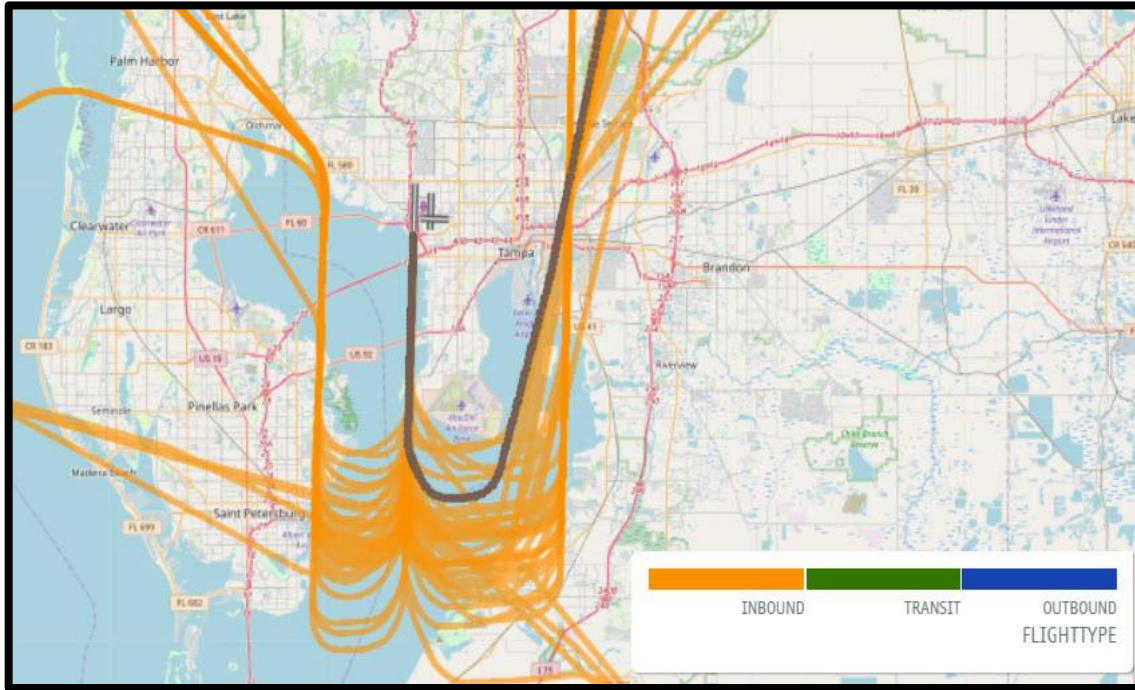


2022 Data

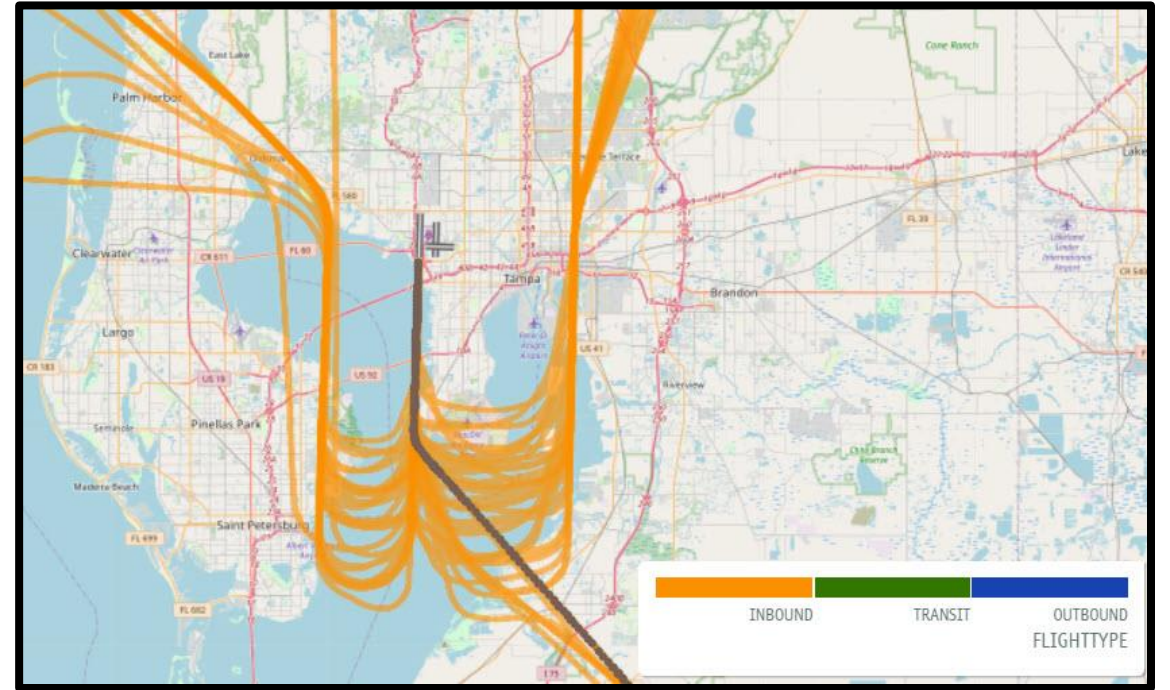


2018 Data

# Airport Pattern North Flow



2022 Data



2018 Data

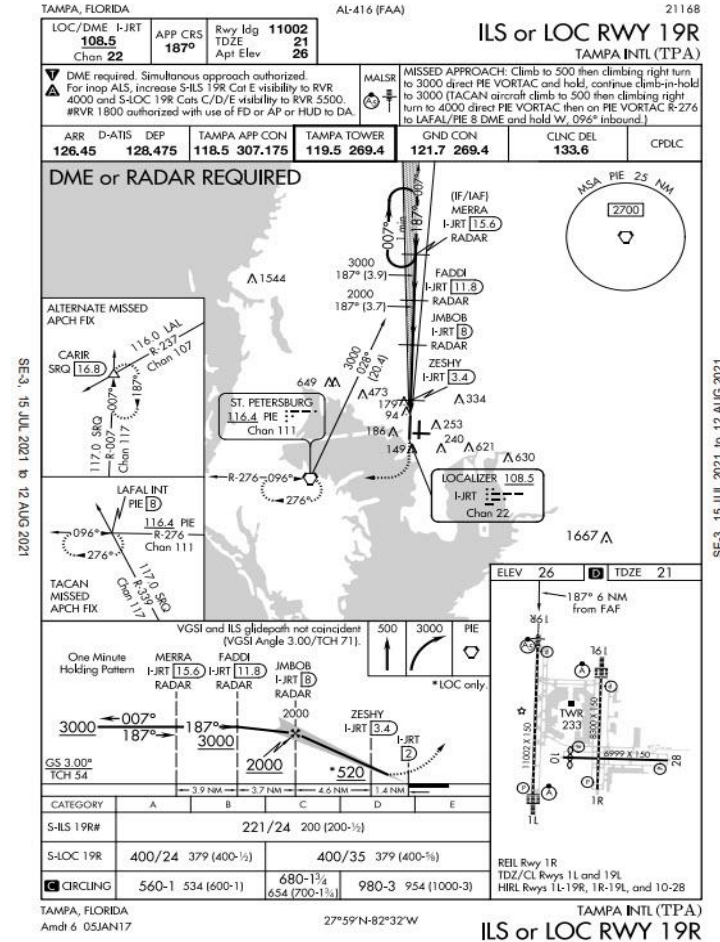
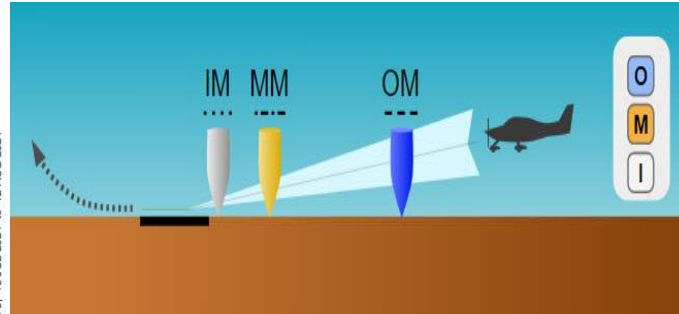
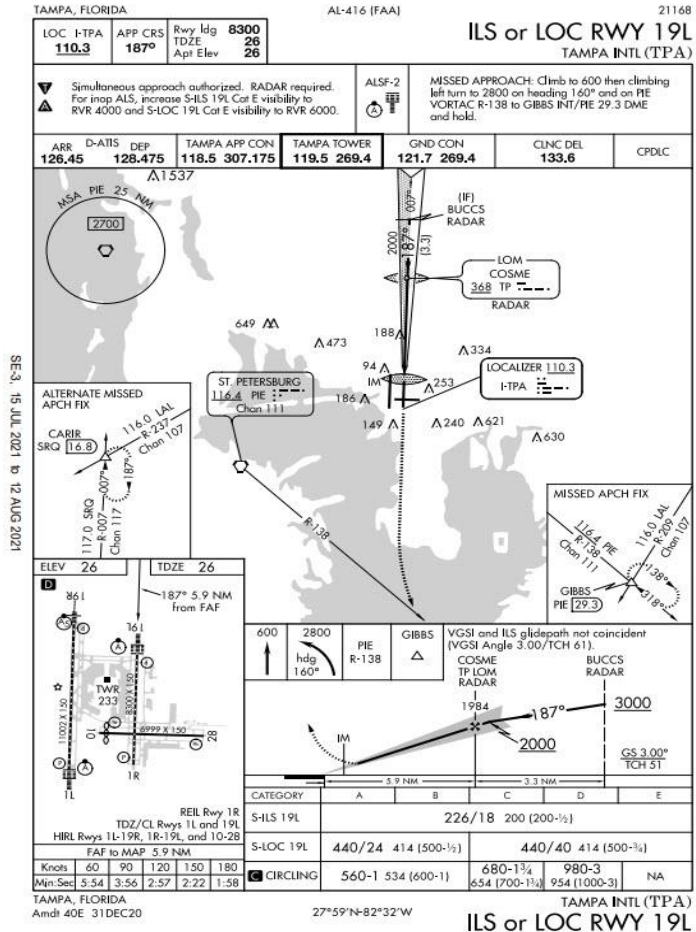


# Cleared to Land...

- ATC Routing
  - Aircraft Separation
  - Stabilized approach
- Descent
  - Speed Reduction
  - Configuration and Checklists
  - Established on Final Approach Course



# Welcome to Tampa





# West Runway Closures

- Runway 1L/19R:
  - Closed July 6<sup>th</sup> ,2022, for various maintenance activities.
  - Closed Daily August 23<sup>rd</sup> - 25<sup>th</sup> ,2022, for various maintenance activities.
  - September 14<sup>th</sup> ,2022 for various maintenance activities.





# East Runway Closures

- Runway 1R/19L:
  - Closed July 27<sup>th</sup>, 2022, for various runway maintenance activities
  - Closed Aug 10<sup>th</sup> and 31<sup>st</sup>, 2022, for various runway maintenance activities





**Hillsborough County Aviation Authority**  
Tampa International, Peter O. Knight,  
Plant City and Tampa Executive Airports

---

# Ongoing Stakeholder Outreach

# September Update

- Spring 2022, meetings completed with:
  - Southwest Airlines
  - Breeze Airways
  - NetJets
  - FlexJet
- Summer 2022, meetings completed with:
  - Spirit Airlines
  - Greater Orlando Aviation Authority (discussion on noise program best practices)
- Upcoming:
  - TPA Noise program advertising with NBAA
  - Meetings with United Airlines, JetBlue Airways, Frontier Airlines, and FedEx



**Hillsborough County Aviation Authority**  
Tampa International, Peter O. Knight,  
Plant City and Tampa Executive Airports

---

# Monthly Scheduled Runway Closures

# Reminder – Scheduled Monthly Runway Closures

1<sup>st</sup> Wednesday of every month – Runway 1L-19R Closed between 7:30 a.m. – 10:30 a.m.

3<sup>rd</sup> Wednesday of every month – Runway 1R-19L Closed between 7:30 a.m. – 10:30 a.m.

**Note: Runway closure dates, times and lengths are subject to change**





Hillsborough County Aviation Authority  
Tampa International, Peter O. Knight,  
Plant City and Tampa Executive Airports

---

## **Next Community Noise Forum Meeting:**

Thursday, November 17<sup>th</sup>, 2022

Times: 9:30 a.m. until 10:30 a.m. and 5:30 p.m. until 6:30 p.m.



# Community Noise Forum Meeting

September 15, 2022

