



Community Noise Forum Meeting

November 16, 2023



Agenda

- Open Comments (20 minutes)
- Noise Monitoring Office Update (40 minutes)

This public meeting is being audio recorded



Hillsborough County Aviation Authority
Tampa International, Peter O. Knight,
Plant City and Tampa Executive Airports

Open Comments

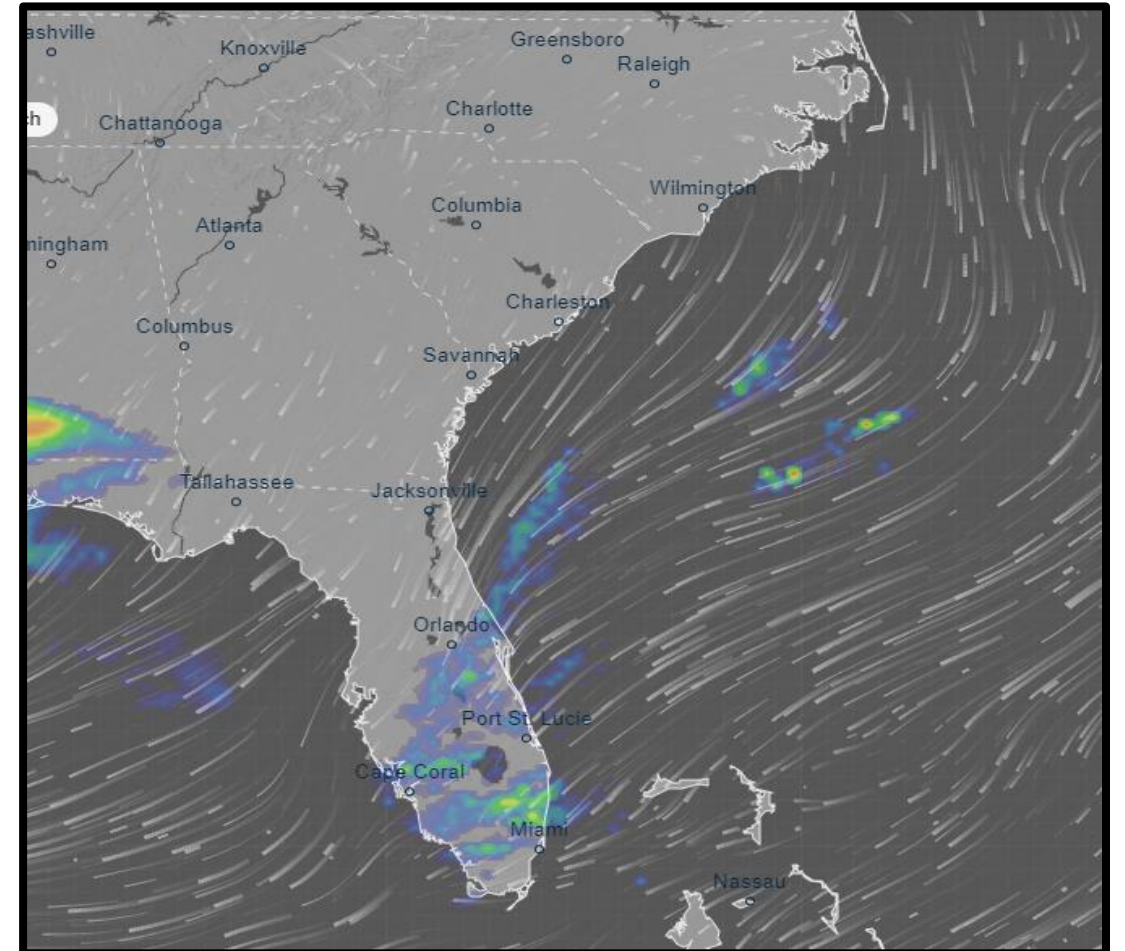


Hillsborough County Aviation Authority
Tampa International, Peter O. Knight,
Plant City and Tampa Executive Airports

Noise Monitoring Office Update

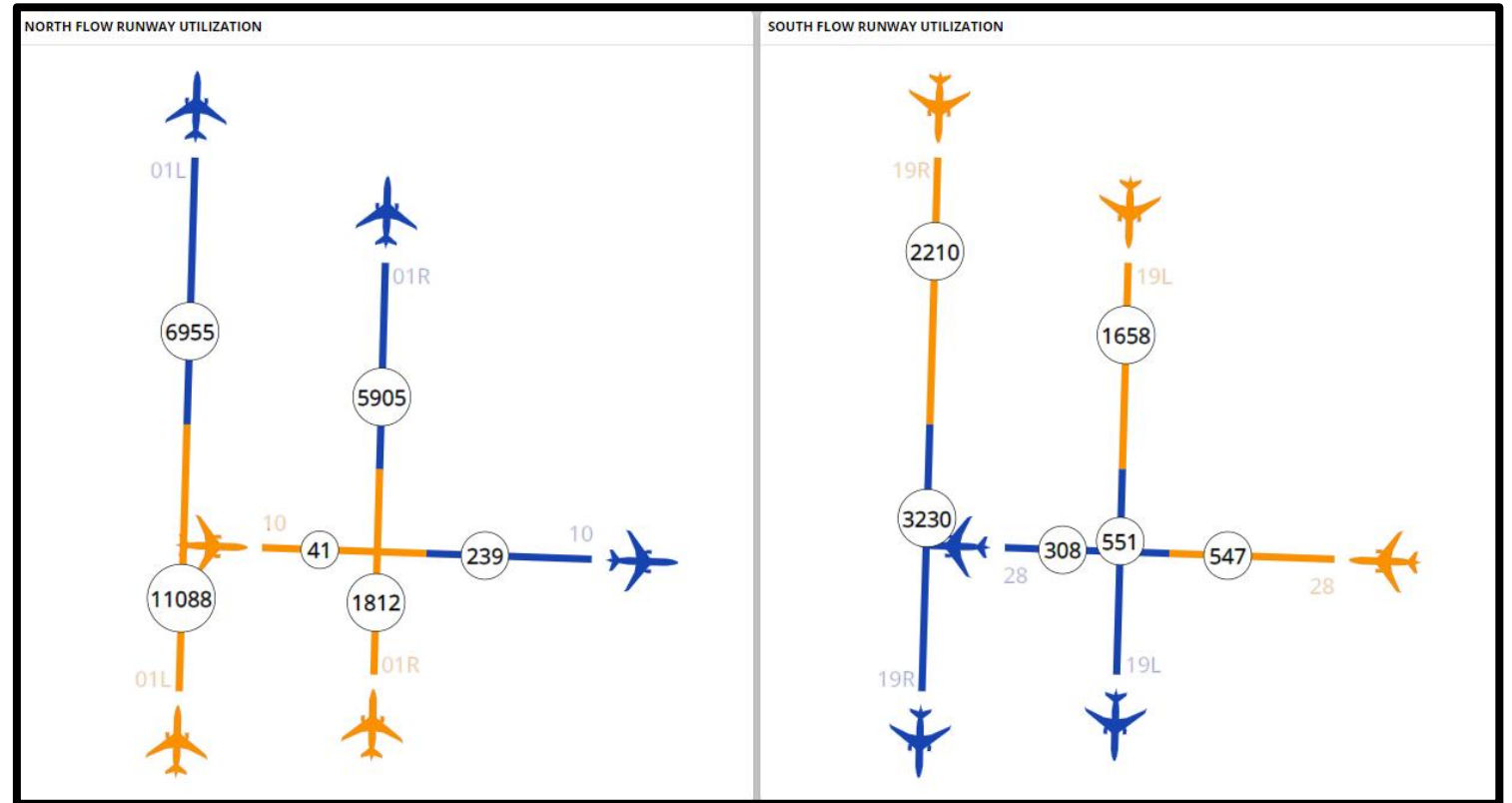
Fall/Winter Weather Patterns

- The winds are predominately from the north:
 - The last 60 days
 - 75% Northerly winds
 - Can give the impression flight patterns have changed



Airport Flow

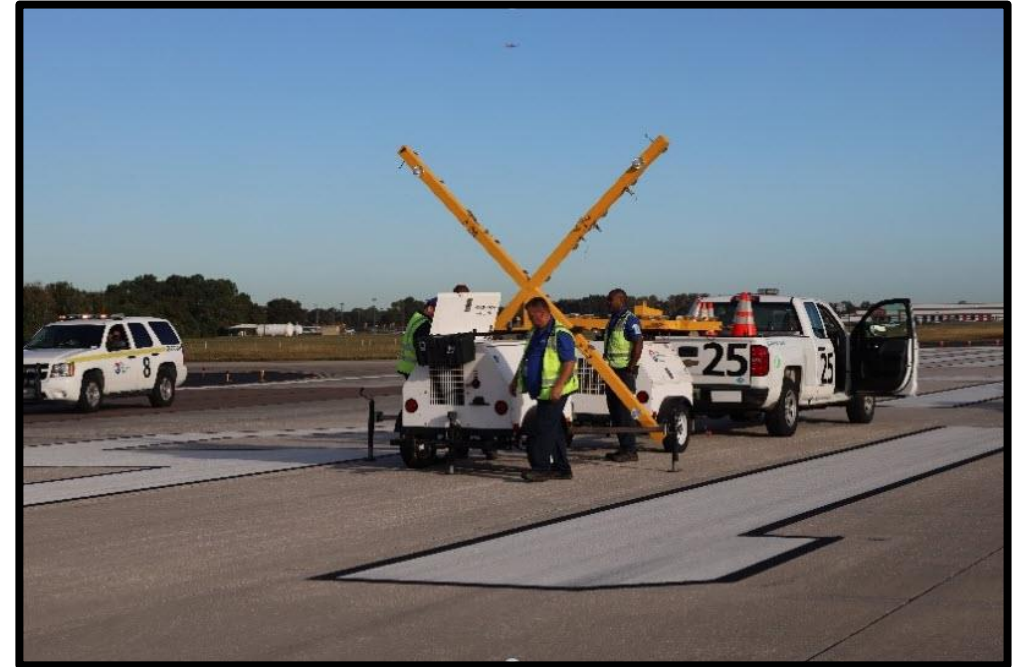
- Airport Flow (September and October Combined):
 - 76.2% North Flow
 - 23.8% South Flow
- Same Period 2022:
 - 71.6% North Flow
 - 28.4% South Flow



Actual Wind Direction Dictates Airport Flow

East Runway Closures

- Runway 1R/19L:
 - Closed September 6th, 2023, for various runway maintenance activities
 - Closed Continuously from September 26th to October 14th, 2023, for various runway maintenance activities
 - Closed November 9th and 10th, 2023, for various runway maintenance activities



West Runway Closures

- Runway 1L/19R:
 - Closed September 5th and 19th, 2023 for various maintenance activities.
 - Closed October 17th, 2023, for various maintenance activities.
 - Closed November 7th, 2023, for various maintenance activities.



Scheduled Runway Closure Data

- September thru November Closure hours
 - Runway 1L/19R - 27 hours
 - Runway 1R/19L - 28 hours
 - Note The 14-day closure of Runway 1R/19L was **not** included
 - Runway 10/28 – 10 hours
 - Note The 14-day closure of Runway 1R/19L was not included



East Runway Closure Impacts

Runway 1R/19L closed for two weeks:

- Air Traffic Control handled the same volume of flights
- Runway 28 Departures:
 - 178 Jet Departures
- Runway 10 Arrivals:
 - 12 Jet Arrivals





Hillsborough County Aviation Authority
Tampa International, Peter O. Knight,
Plant City and Tampa Executive Airports

Monthly Scheduled Runway Closures

Reminder – Scheduled Monthly Runway Closures

1st Wednesday of every month – Runway 1L-19R Closed between 7:30 a.m. – 10:30 a.m.

3rd Wednesday of every month – Runway 1R-19L Closed between 7:30 a.m. – 10:30 a.m.

Note: Runway closure dates, times and lengths are subject to change



Hillsborough County Aviation Authority
Tampa International, Peter O. Knight,
Plant City and Tampa Executive Airports

Next Community Noise Forum Meeting:

Thursday, January 11, 2024

Times: 9:30 a.m. until 10:30 a.m. and 5:30 p.m. until 6:30 p.m.



Community Noise Forum Meeting

November 16, 2023

