

Tampa International Airport

Monthly Noise Monitoring Office Report

November 2022



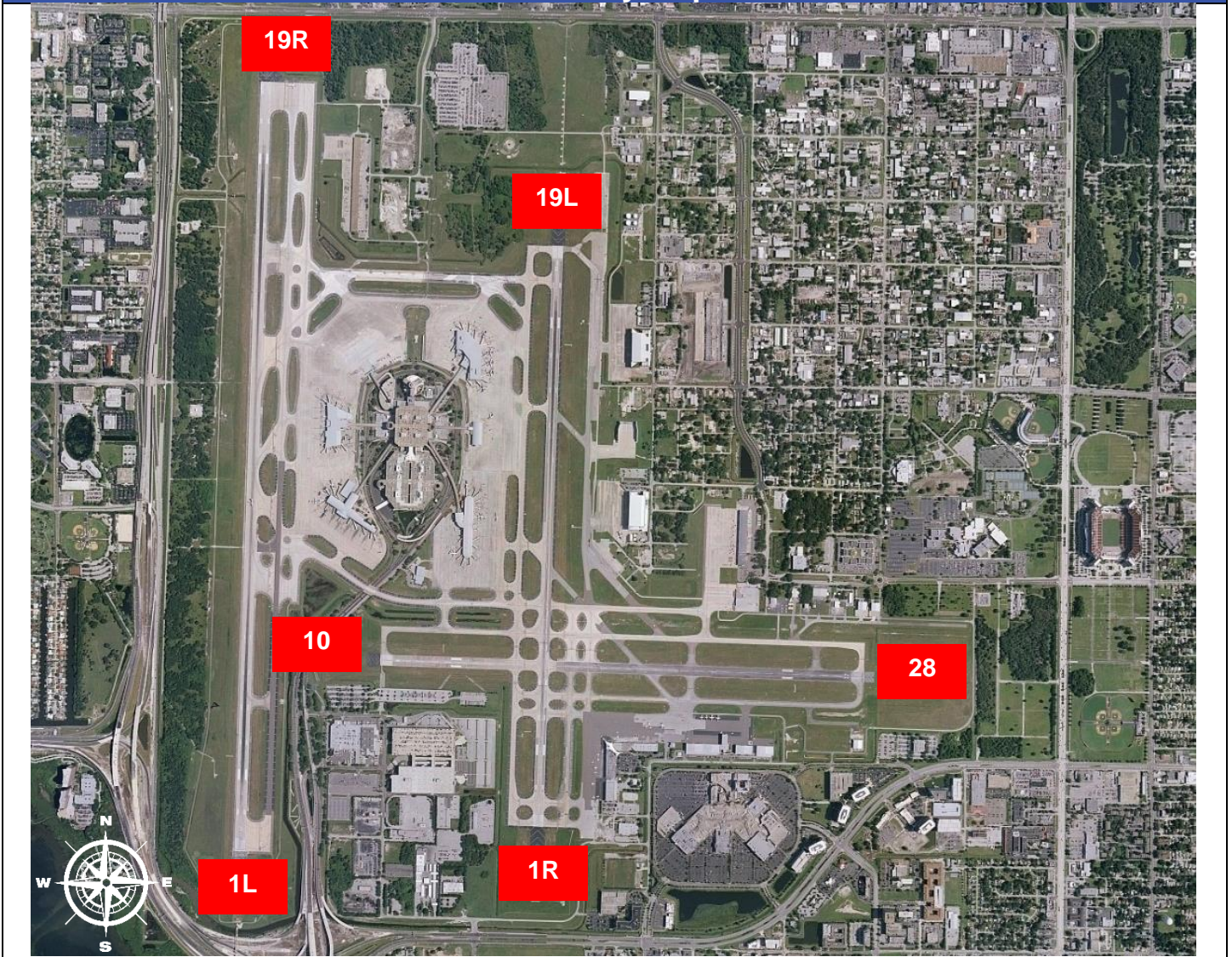
Monthly Noise Report	
Operational Impacts	Community Outreach
<ul style="list-style-type: none"> Runway 1L-19R closed on November 2nd, 2022 for scheduled maintenance activities. Runway 1R-19L closed on November 30th, 2022 for scheduled maintenance activities. 	<ul style="list-style-type: none"> A Community Noise Forum meeting was held on November 17th, 2022 Our Noise 101 meeting was cancelled due to no RSVPs for the event.
For more information please visit: www.tampaairport.com/noise-abatement or call: (813) 870-7843	

Deviations		
North of Airport	West of Airport	South of Airport
<i>1L / 1R Departures – Westbound Aircraft Turns Below 3,000 ft.</i> Jet Aircraft Turns Below 3,000 ft.: 1,661 Deviation Percentage of Total North Flow Departures: 32% Compliance: 68%	<i>Runway 10-28 Arrivals / Departures</i> Total Runway 10 Jet Arrivals: 11 Deviation Percentage of Total Jet Operations: .1% Compliance: 99.9%	<i>Runway 1R Jet Arrivals and Runway 19L Commercial Jet Departures</i> Total Runway 1R Jet Landings: 567 Total Runway 19L Commercial Jet Departures: 45 Combined Deviation Percentage of Total Jet Operations****: 3.9% Combined Compliance****: 96.1%

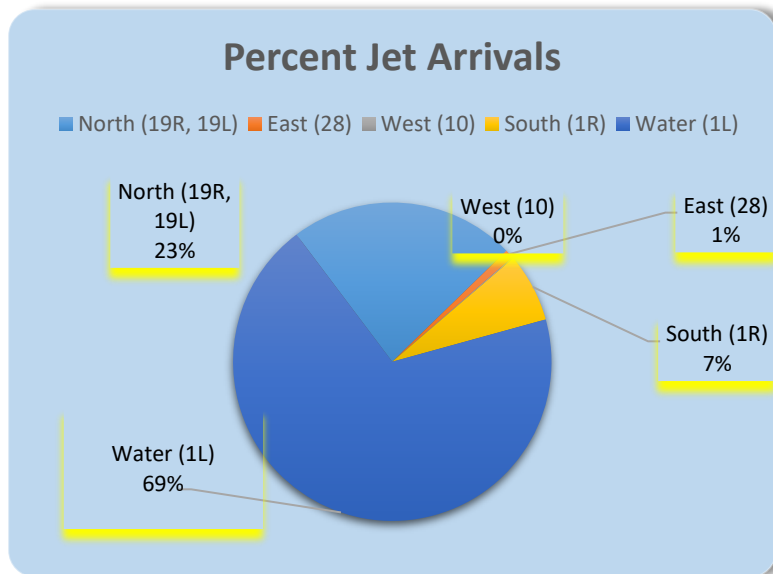
Operational Totals for November 2022	
Total Jet Operations (All Runways):	15,833
Total Prop/Turboprop Operations (All Runways):	1,351
Total North Flow Operations All Aircraft (Runway 1L & 1R):	12,962**
Total South Flow Operations All Aircraft (Runway 19R & 19L):	3,631**
All Aircraft Operations 7 a.m. -10 p.m.:	14,442***
All Aircraft Operations 10 p.m. – 7a.m.:	2,726***
Total Pilot Request Deviations (corporate & commercial jet combined):	453
Total Preferred Runway Unavailable Deviations (corporate & commercial jet combined):	91
Total FAA Assigned Deviations (corporate & commercial jet combined):	113
Total Noise Complaints (Month/Year):	303 / 3,556

Key
* Includes: Scheduled runway closures, unscheduled runway closures, aircraft emergencies and wildlife strike inspections
** Does not include Runway 10-28
*** Flights operating at exactly 7a.m. and 10p.m. are included in both figures
**** Combined deviation percentages for both runways

Runway Map



Percentage of Jet Arrivals by Runway End (November 2022)



- Runway Closures: **1R/19L**
- **West Runway** Unavailable includes closures for maintenances and emergencies, among other factors.
- Total complaints based on complaints logged as of [November 30th, 2022].
- Commercial Jet Aircrafts are: Boeing, Airbus, McDonald Douglas, Douglas Corporation, Bombardier and Embraer commercial aircraft.
- Pilot Request Deviations include commercial jet aircraft departures on Runway 19L and jet aircraft arrivals on Runway 1R.
- This data compiled from the noise office software provided by Casper Airport Solutions and may differ from official FAA monthly traffic counts.