

Tampa International Airport

Monthly Noise Monitoring Office Report

August 2023



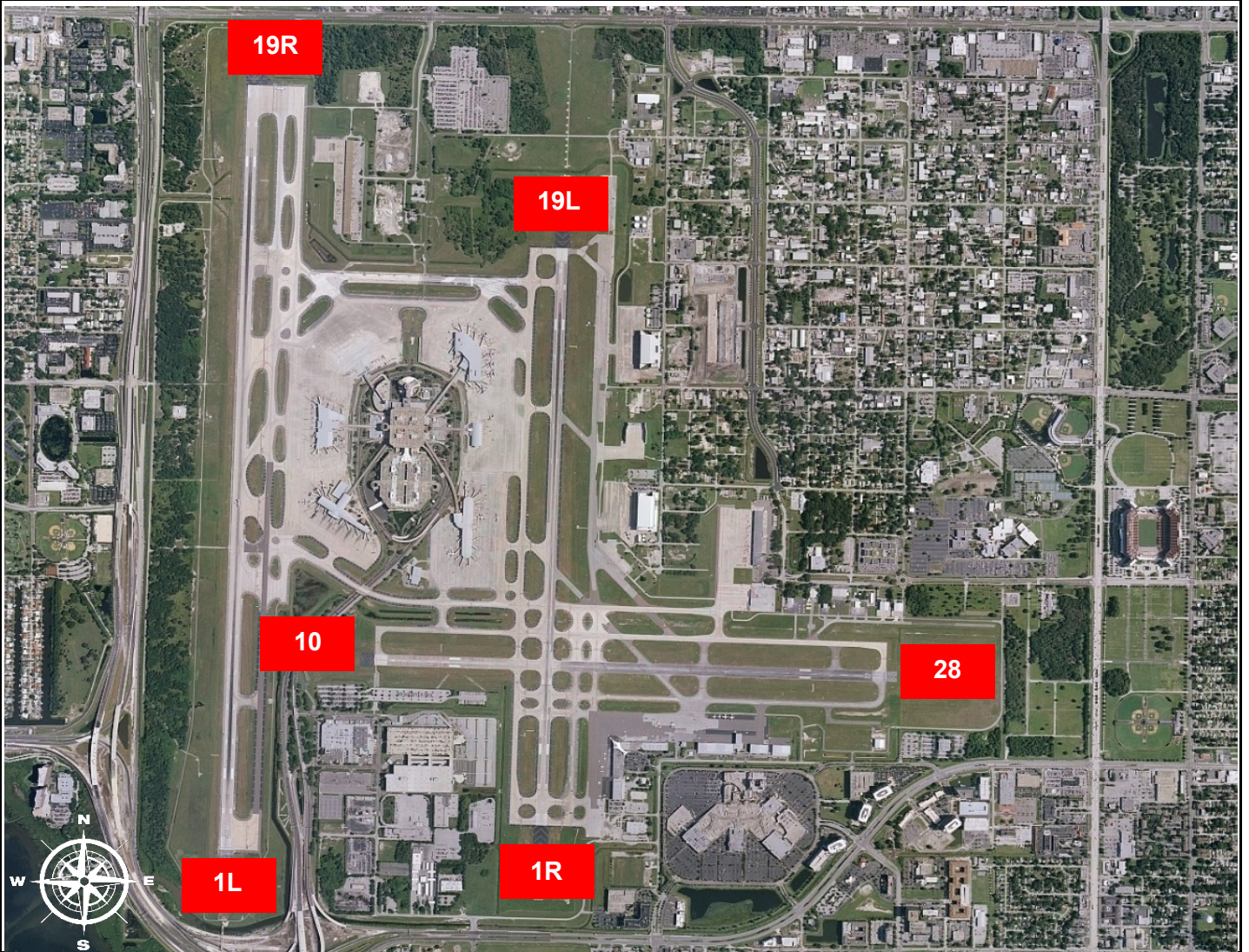
Monthly Noise Report	
Operational Impacts	Community Outreach
<ul style="list-style-type: none"> Runway 1L-19R was closed on August 8th, 22nd and 31st, 2023 for various maintenance activities. Runway 1R-19L was closed on August 9th, 10th, 23rd, and 24th, 2023 for various maintenance activities. Runway 10/28 was closed on August 9th, 11th, 23rd, and 25th, 2023 for various maintenance activities. 	<ul style="list-style-type: none"> A Community Noise Forum meeting is scheduled for September 21st, 2023.
For more information please visit: www.tampaairport.com/noise-abatement or call: (813) 870-7843	

Deviations		
North of Airport	West of Airport	South of Airport
1L / 1R Departures – Westbound Aircraft Turns Below 3,000 ft.	Runway 10-28 Arrivals / Departures	Runway 1R Jet Arrivals and Runway 19L Commercial Jet Departures
Jet Aircraft Turns Below 3,000 ft.: 906 Deviation Percentage of Total North Flow Departures: 25% Compliance: 75%	Total Runway 10 Jet Arrivals: 16 Deviation Percentage of Total Jet Operations: .1% Compliance: 99.9%	Total Runway 1R Jet Landings: 313 Total Runway 19L Commercial Jet Departures: 139 Combined Deviation Percentage of Total Jet Operations****: 3.1% Combined Compliance****: 96.9%

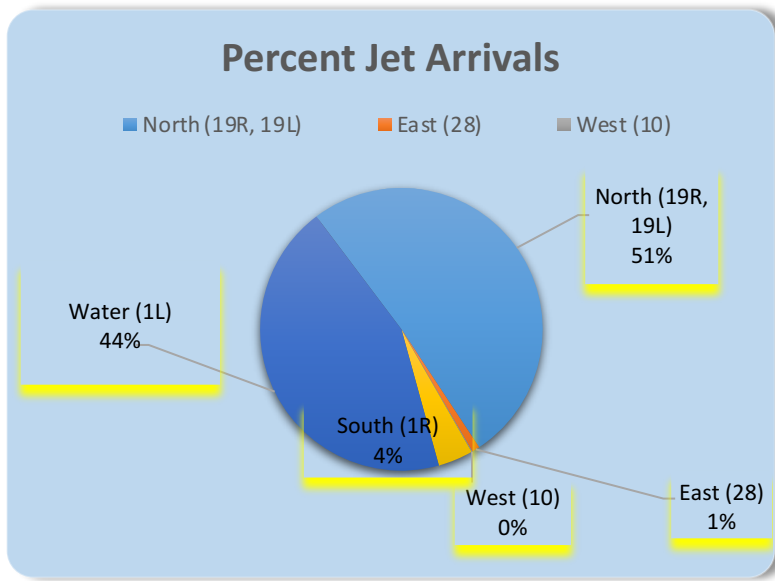
Operational Totals for August 2023	
Total Jet Operations (All Runways):	14,318
Total Prop/Turboprop Operations (All Runways):	1,315
Total North Flow Operations All Aircraft (Runway 1L & 1R):	7,319**
Total South Flow Operations All Aircraft (Runway 19R & 19L):	7,694**
All Aircraft Operations 7 a.m. -10 p.m.:	12,585***
All Aircraft Operations 10 p.m. – 7a.m.:	3,026***
Total Pilot Request Deviations (corporate & commercial jet combined):	312
Total Preferred Runway Unavailable Deviations (corporate & commercial jet combined):	169
Total FAA Assigned Deviations (corporate & commercial jet combined):	97
Total Noise Complaints (Month/Year):	158 / 1,810

Key
* Includes: Scheduled runway closures, unscheduled runway closures, aircraft emergencies and wildlife strike inspections
** Does not include Runway 10-28
*** Flights operating at exactly 7a.m. and 10p.m. are included in both figures
**** Combined deviation percentages for both runways

Runway Map



Percentage of Jet Arrivals by Runway End (August 2023)



- Runway Closures: **1R/19L**
- **West Runway** Unavailable includes closures for maintenances and emergencies, among other factors.
- Total complaints based on complaints logged as of August 31st, 2023.
- Commercial Jet Aircrafts are: Boeing, Airbus, McDonald Douglas, Douglas Corporation, Bombardier and Embraer commercial aircraft.
- Pilot Request Deviations include commercial jet aircraft departures on Runway 19L and jet aircraft arrivals on Runway 1R.
- This data compiled from the noise office software provided by Casper Airport Solutions and may differ from official FAA monthly traffic counts.