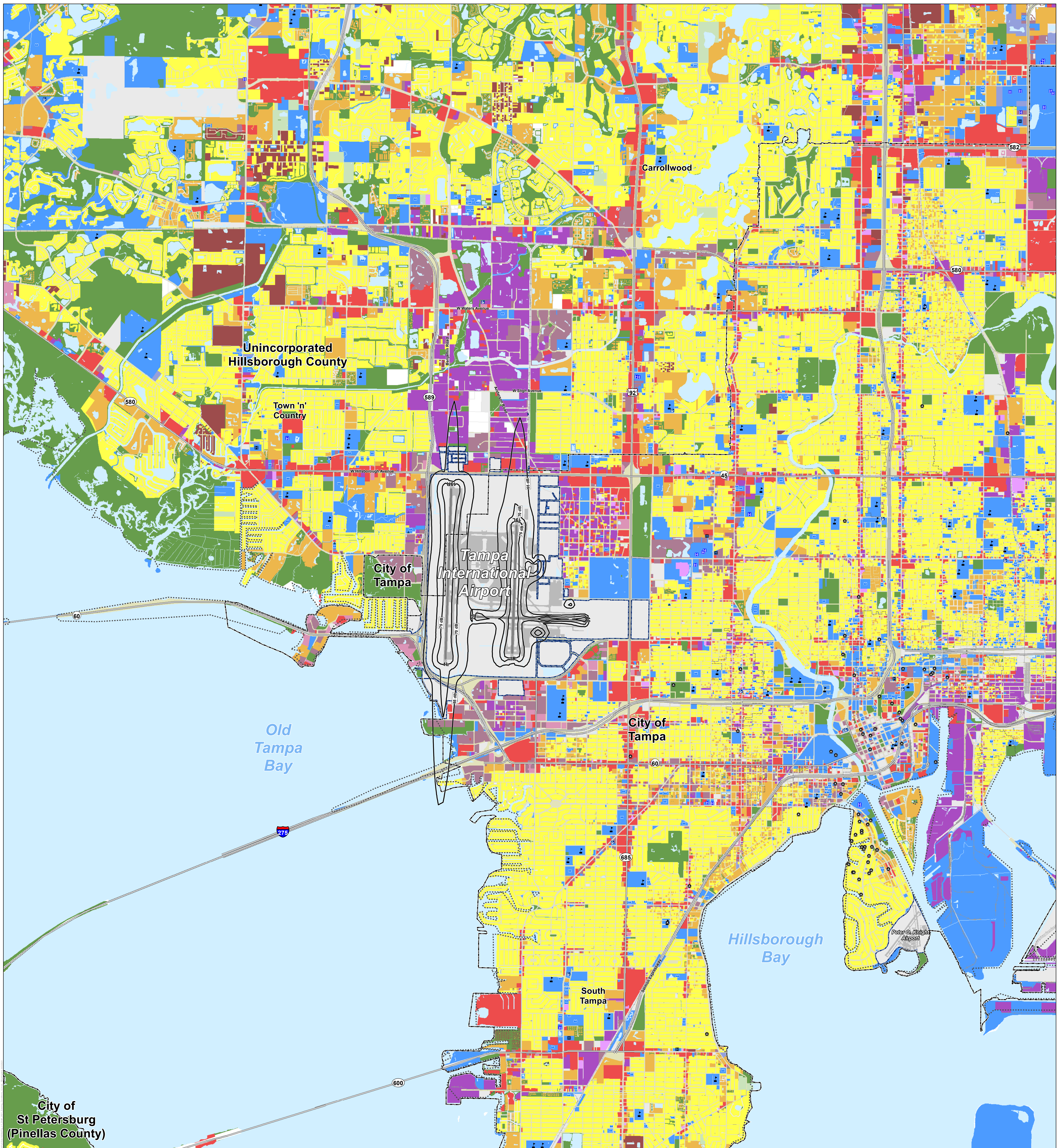


APPENDIX J

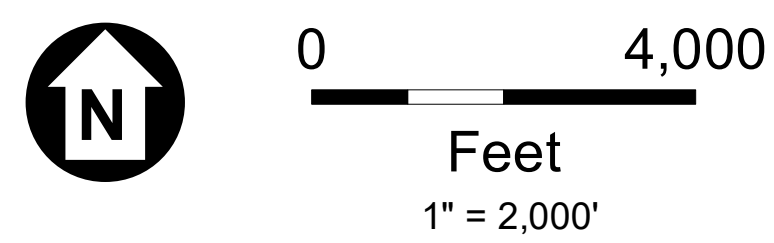
Official Noise Exposure Maps

This Appendix contains the official Noise Exposure Maps (NEMs) of Tampa International Airport developed as a part of the Draft NEM Update.

- Figure J-1 Draft 2021 Existing Conditions Noise Exposure Map
- Figure J-2 Draft 2026 Future Conditions Noise Exposure Map
- Figure J-3 AEDT Fixed-Wing Flight Tracks – North Flow
- Figure J-4 AEDT Fixed-Wing Flight Tracks – South Flow
- Figure J-5 AEDT Helicopter Flight Tracks – All Flows



- Legend**
- Care Facility
 - National Register Historic Resource
 - Local Historic Resource
 - Nursing/Convalescent Facility
 - Place of Worship
 - Hospital
 - School
 - Library
 - Highway
 - Major Road
 - Rail Line
 - Stream
 - Waterbody
 - Municipality
 - County Boundary
 - Existing Land Use
 - Residential - Single Family
 - Residential - Multi-Family
 - Residential - Mobile Home
 - Residential - Group
 - Mixed Use
 - Commercial - Lodging
 - Commercial - Office
 - Commercial - Retail/Dining
 - Industrial/Manufacturing
 - Institutional/Public
 - Park/Open Space
 - Agriculture
 - Transportation/Utilities
 - Unknown
 - Vacant
 - 2021 DNL Contours



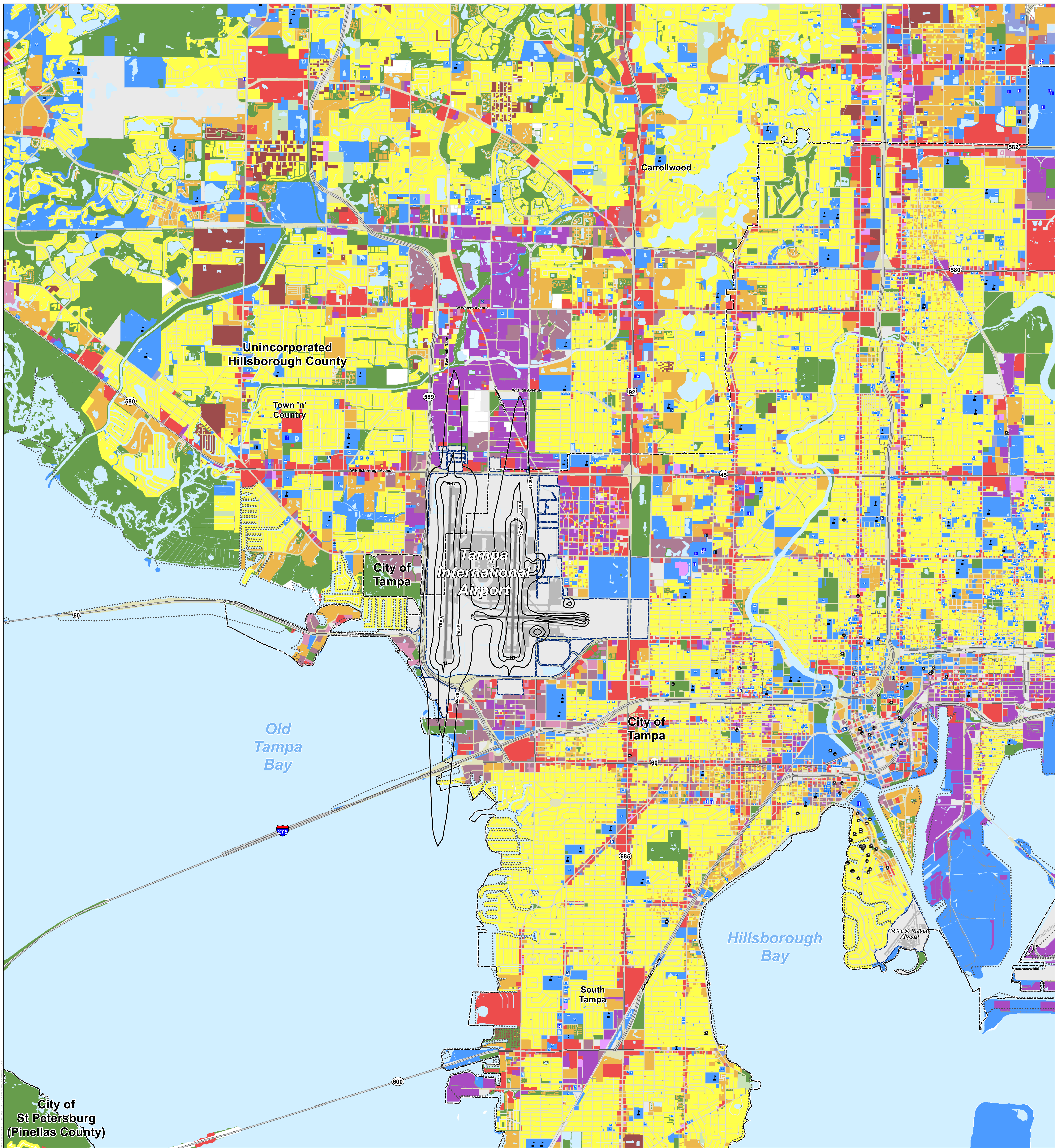
Sponsor's Certification
 The Hillsborough County Aviation Authority certifies that it has afforded interested persons adequate opportunity to submit their views, data, and comments concerning the correctness and adequacy of the Tampa International Airport 2021 Noise Exposure Map and descriptions of forecast aircraft operations. The 2021 operations at Tampa International Airport are hereby certified to be consistent with fleet mix, forecast operational levels, and flight procedures depicted on this 2021 Noise Exposure Map.

By: _____
 Title: _____
 Address: _____

 Signature Date

Figure J-1
Draft 2021 Existing Conditions
Noise Exposure Map
 Map 1 of 5
 Tampa International Airport

SOURCE: AEDT, 3d, 2021; City of Tampa, July 2020; County of Hillsborough, July 2020; County of Pinellas, July 2020; Hillsborough County Property Appraiser, July 2020; Hillsborough MPO, July 2020; Pinellas County Assessor, July 2020.



Legend

● Care Facility	— Highway	■ Commercial - Retail/Dining	— 2026 DNL Contours
● National Register Historic Resource	— Major Road	■ Residential - Single Family	
● Local Historic Resource	— Rail Line	■ Residential - Multi-Family	
■ Nursing/Convalescent Facility	— Stream	■ Residential - Mobile Home	
■ Place of Worship	— Waterbody	■ Residential - Group	
■ Hospital	— Municipality	■ Mixed Use	
■ School	— County Boundary	■ Commercial - Lodging	
■ Library		■ Commercial - Office	
		■ Agriculture	
		■ Transportation/Utilities	
		■ Unknown	
		■ Vacant	

SOURCE: AEDT, 3d, 2021; City of Tampa, July 2020; County of Hillsborough, July 2020; County of Pinellas, July 2020; Hillsborough County Property Appraiser, July 2020; Hillsborough MPO, July 2020; Pinellas County Assessor, July 2020.

0 4,000
Feet
1" = 2,000'

Sponsor's Certification
The Hillsborough County Aviation Authority certifies that it has afforded interested persons adequate opportunity to submit their views, data, and comments concerning the correctness and adequacy of the Tampa International Airport 2021 Noise Exposure Map and descriptions of forecast aircraft operations. The 2021 operations at Tampa International Airport are hereby certified to be consistent with fleet mix, forecast operational levels, and flight procedures depicted on this 2021 Noise Exposure Map.

By: _____
Title: _____
Address: _____
Signature _____ Date _____

Figure J-2
Draft 2026 Future Conditions
Noise Exposure Map
Map 2 of 5
Tampa International Airport



Legend

▲ Care Facility	— Highway	Existing Land Use	■ Commercial - Retail/Dining	Operation Type
● National Register Historic Resource	— Major Road	■ Residential - Single Family	■ Industrial/Manufacturing	— Arrival Backbone Flight Track
◆ Local Historic Resource	— Rail Line	■ Residential - Multi-Family	■ Institutional/Public	— Arrival Subtrack
■ Nursing/Convalescent Facility	— Stream	■ Residential - Mobile Home	■ Park/Open Space	— Departure Backbone Flight Track
■ Place of Worship	— Waterbody	■ Residential - Group	■ Agriculture	— Departure Subtrack
■ Hospital	— Municipality	■ Mixed Use	■ Transportation/Utilities	
■ School	— County Boundary	■ Commercial - Lodging	■ Unknown	
■ Library		■ Commercial - Office	■ Vacant	

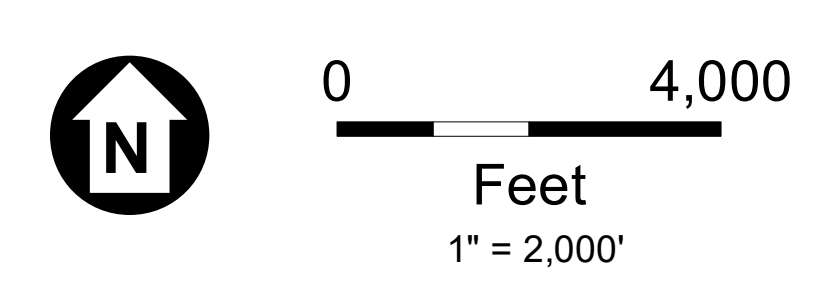


Figure J-3
AEDT Fixed-Wing Flight Tracks
North Flow
 Map 3 of 5
 Tampa International Airport

SOURCE: AEDT, 3d, 2021; City of Tampa, July 2020; County of Hillsborough, July 2020; County of Pinellas, July 2020; Hillsborough County Property Appraiser, July 2020; Hillsborough MPO, July 2020; Pinellas County Assessor, July 2020.



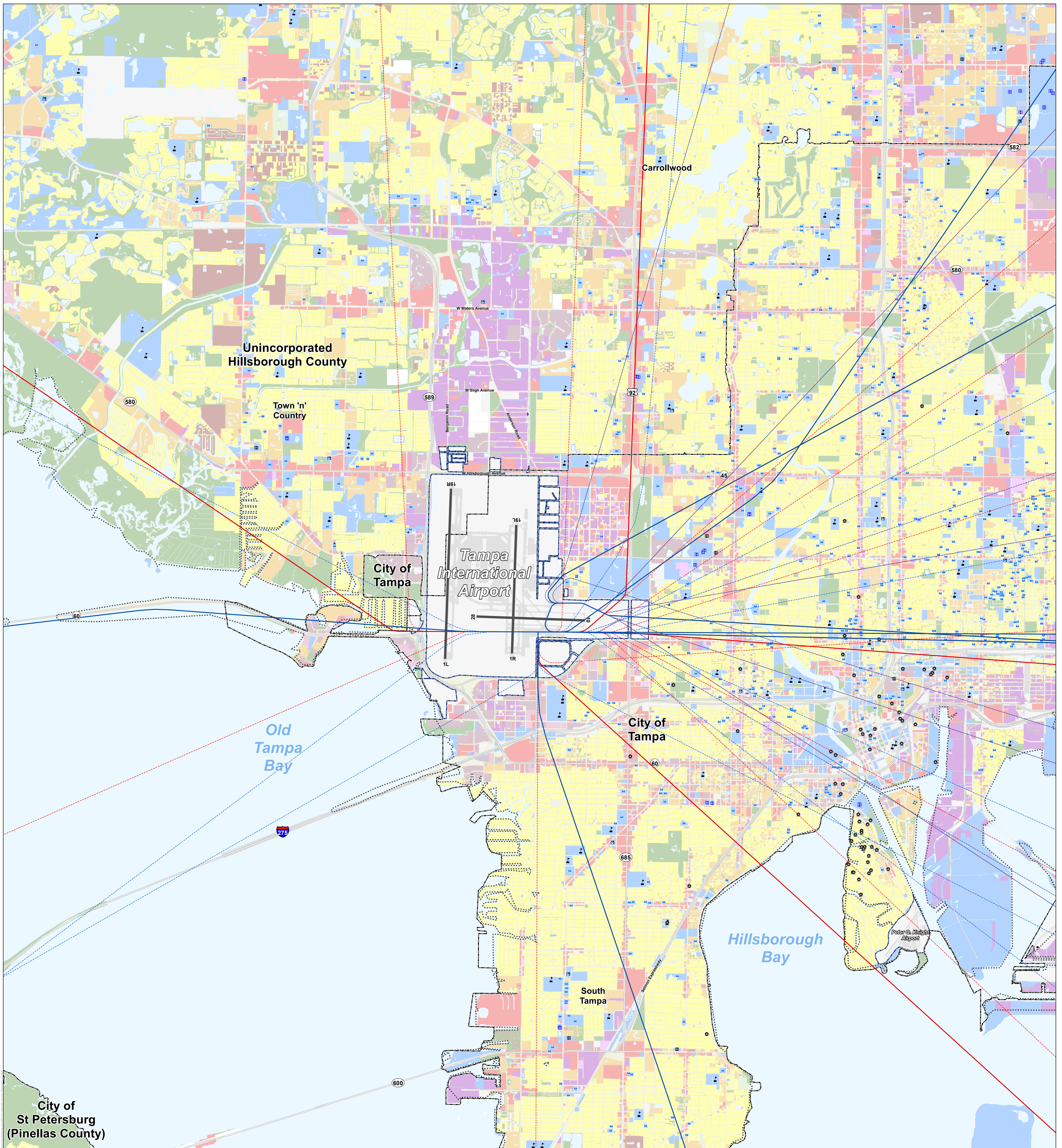
- | | | | |
|---|--|--|---|
| <ul style="list-style-type: none"> ▲ Care Facility ● National Register Historic Resource ● Local Historic Resource ■ Nursing/Convalescent Facility ■ Place of Worship ■ Hospital ■ School ■ Library | <ul style="list-style-type: none"> — Highway — Major Road — Rail Line — Stream — Waterbody — Municipality — County Boundary | <p>Existing Land Use</p> <ul style="list-style-type: none"> ■ Residential - Single Family ■ Residential - Multi-Family ■ Residential - Mobile Home ■ Residential - Group ■ Mixed Use ■ Commercial - Lodging ■ Commercial - Office ■ Commercial - Retail/Dining ■ Industrial/Manufacturing ■ Institutional/Public ■ Park/Open Space ■ Agriculture ■ Transportation/Utilities ■ Unknown ■ Vacant | <p>Operation Type</p> <ul style="list-style-type: none"> — Arrival Backbone Flight — Arrival Subtrack — Departure Backbone Flight — Departure Subtrack |
|---|--|--|---|

SOURCE: AEDT, 3d, 2021; City of Tampa, July 2020; County of Hillsborough, July 2020; County of Pinellas, July 2020; Hillsborough County Property Appraiser, July 2020; Hillsborough MPO, July 2020; Pinellas County Assessor, July 2020.



0 4,000
Feet
1" = 2,000'

Figure J-4
AEDT Fixed-Wing Flight Tracks
South Flow
Map 4 of 5
Tampa International Airport



Legend

▲ Care Facility	— Highway	Existing Land Use	Commercial - Retail/Dining	Operation Type
● National Register Historic Resource	— Major Road	Residential - Single Family	Industrial/Manufacturing	— Arrival Backbone Flight Track
★ Local Historic Resource	— Rail Line	Residential - Multi-Family	Institutional/Public	— Arrival Subtrack
⊠ Nursing/Convalescent Facility	— Stream	Residential - Mobile Home	Park/Open Space	— Departure Backbone Flight Track
⊠ Place of Worship	— Waterbody	Residential - Group	Agriculture	— Departure Subtrack
⊠ Hospital	— Municipality Boundary	Mixed Use	Transportation/Utilities	
⊠ School	— County Boundary	Commercial - Lodging	Unknown	
⊠ Library		Commercial - Office	Vacant	

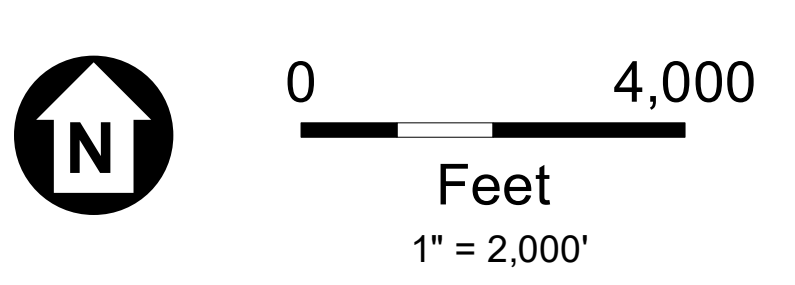


Figure J-5
AEDT Helicopter Flight Tracks
All Flows
 Map 5 of 5
 Tampa International Airport

SOURCE: AEDT, 3d, 2021; City of Tampa, July 2020; County of Hillsborough, July 2020; County of Pinellas, July 2020; Hillsborough County Property Appraiser, July 2020; Hillsborough MPO, July 2020; Pinellas County Assessor, July 2020.